

BTS-290-SP-C

Page 1 to 4 – Base

Page 5 – Swivel Pin Assembly

Page 6 – Discharge Chute Assembly

Page 7 – Discharge Flow Regulator

Page 8 to 11 – Conveyor

Page 12 & 13 – Hopper

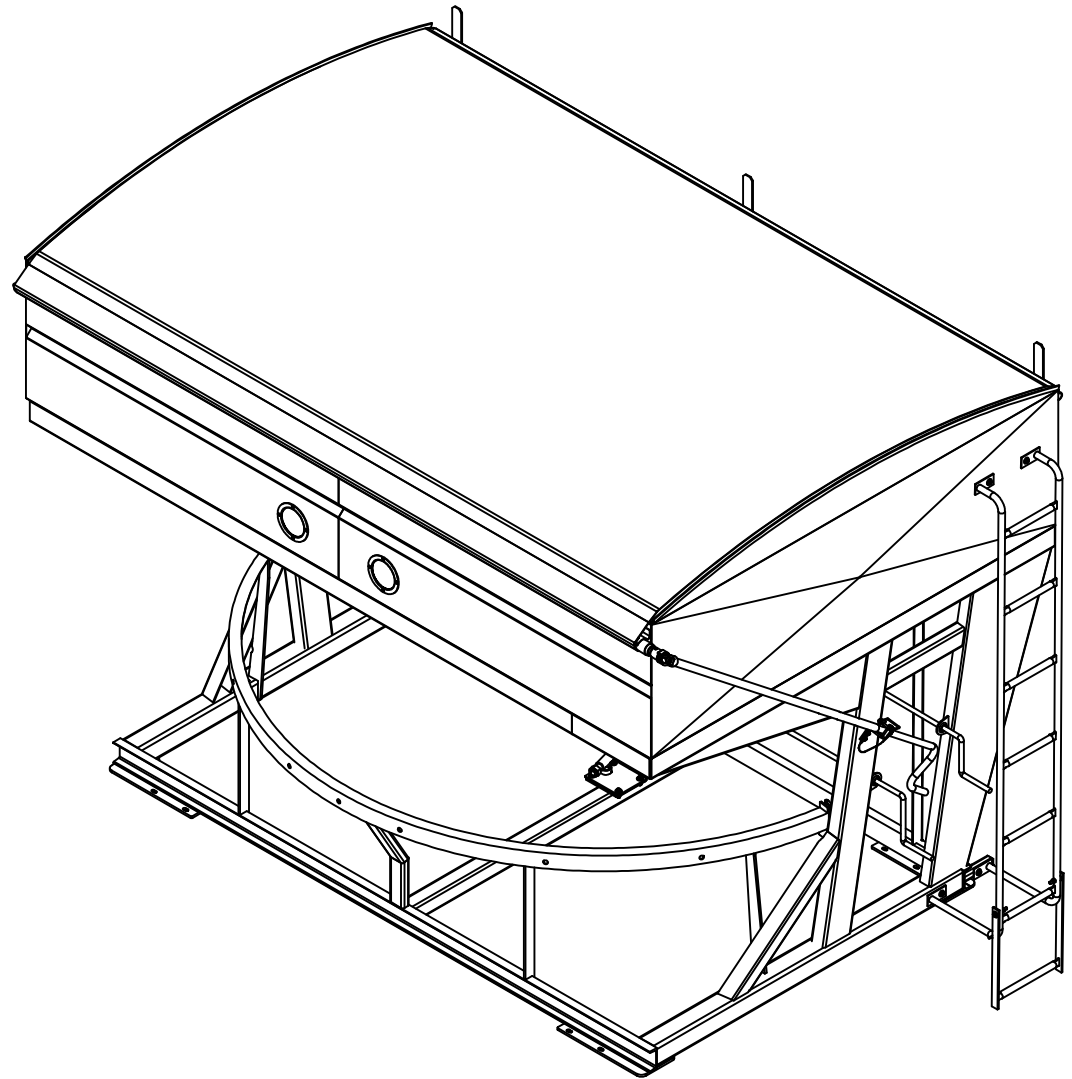
Page 14 – locking Mechanism

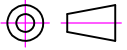
Page 15 – Discharge

Page 16 to 18 – Gas Drive w/ Electric Start

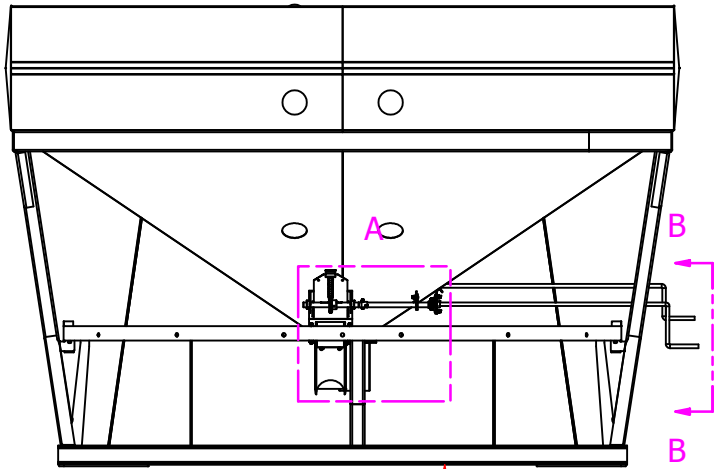
Page 19 & 20 – Wireless throttle Control

| ITEM | PART # | DESCRIPTION | QTY |
|------|--------------|--|-----|
| 1 | 502003 | LOCK PIN WITH LANYARD | 2 |
| 2 | 501338 | SWIVEL PIN ASSEMBLY | 1 |
| 3 | 501329 | DISCHARGE CHUTE ASSEMBLY | 2 |
| 4 | 402008 | LADDER EXTENSION | 1 |
| 5 | 402007 | HANDLE BRACKET | 2 |
| 6 | 402006 | GATE SHAFT | 2 |
| 7 | 400271 | BOLT ON LADDER | 2 |
| 8 | 400269 | BEAN TENDER FRAME - THREE COMPARTMENT | 1 |
| 9 | 400201 | SPROCKET - #60 x 13 TOOTH | 2 |
| 10 | 400200 | DISCHARGE FLOW REGULATOR | 2 |
| 11 | 25-1000-0077 | GROMMET - PUSH IN - RUBBER 7/8" X 1 5/8" | 2 |
| 12 | 25-1000-0046 | ROLL TARP KIT | 1 |
| 13 | 16-1800-0001 | COMPRESSION SPRING - 1/2" I.D. | 8 |
| 14 | 16-1707-0004 | USS FLAT WASHER - 3/8" PLTD | 46 |
| 15 | 16-1707-0003 | USS FLAT WASHER - 5/16" PLTD | 4 |
| 16 | 16-1707-0002 | USS FLAT WASHER - 1/4" PLTD | 14 |
| 17 | 16-1400-0038 | SET SCREW - 1/4"-20 UNC x 1" | 2 |
| 18 | 16-1200-0015 | POP RIVET - 3/16" x 3/8" - SMALL HEAD | 16 |
| 19 | 16-0707-0011 | NYLON INSERT LOCK NUT - 1" UNC - PLTD - GRD 5 | 1 |
| 20 | 16-0707-0003 | NYLON INSERT LOCK NUT - 3/8" UNC - PLTD - GRD 5 | 30 |
| 21 | 16-0707-0002 | NYLON INSERT LOCK NUT - 5/16" UNC - PLTD - GRD 5 | 2 |
| 22 | 16-0707-0001 | NYLON INSERT LOCK NUT - 1/4" UNC - PLTD - GRD 5 | 10 |
| 23 | 16-0307-0124 | CARRIAGE BOLT - 3/8" x 1" UNC - PLTD - GRD 5 | 4 |
| 24 | 16-0207-0495 | HEX BOLT - 1" x 7" UNC - PLTD - GRD 5 | 1 |
| 25 | 16-0207-0142 | HEX BOLT - 3/8" x 5" UNC - PLTD - GRD 5 | 2 |
| 26 | 16-0207-0132 | HEX BOLT - 3/8" x 2 1/2" UNC - PLTD - GRD 5 | 4 |
| 27 | 16-0207-0126 | HEX BOLT - 3/8" x 1 1/4" UNC - PLTD - GRD 5 | 6 |
| 28 | 16-0207-0124 | HEX BOLT - 3/8" x 1" UNC - PLTD - GRD 5 | 6 |
| 29 | 16-0207-0067 | HEX BOLT - 5/16" x 1 1/4" UNC - PLTD - GRD 5 | 2 |
| 30 | 16-0207-0066 | HEX BOLT - 5/16" x 1" UNC - SELF THREADING | 2 |
| 31 | 16-0207-0011 | HEX BOLT - 1/4" x 1 3/4" UNC - PLTD - GRD 5 | 2 |
| 32 | 16-0207-0010 | HEX BOLT - 1/4" x 1 1/2" UNC - PLTD - GRD 5 | 1 |
| 33 | 16-0207-0004 | HEX BOLT - 1/4" x 3/4" UNC - PLTD - GRD 5 | 7 |
| 34 | 11-2300-0020 | KEY - 1/4" x 1/4" x 2" | 2 |
| 35 | 11-1700-0093 | 35BS15 - 1" BORE SPROCKET | 1 |
| 36 | 11-1700-0092 | 35BS15 - 3/4" BORE SPROCKET | 1 |
| 37 | 11-1100-0043 | ROLLER CHIAN - #35 (INCH) | 31 |
| 38 | 11-1100-0021 | ROLLER CHAIN CONNECTOR LINK - #35 | 1 |
| 39 | 103660 | 5" ROUND SIGHT GLASS WINDOW | 4 |
| 40 | 103161 | CENTER DIVIDER WALL - BOLT ON SECTION PLATE | 1 |
| 41 | 103040 | OVER CENTER LATCH (DIPPED PAINT) | 2 |
| 42 | 103031 | GATE HANDLE - FRONT | 1 |
| 43 | 103030 | 3/4" SHAFT COLLAR - MACHINED | 1 |
| 44 | 103029 | CRANK MOUNT PLATE | 1 |
| 45 | 103028 | GATE HANDLE - FRONT | 1 |
| 46 | 103026 | GATE SHAFT - SUPPORT SLIDER | 1 |
| 47 | 103025 | GATE SHAFT COUPLER | 1 |
| 48 | 103024 | GATE SHAFT - EXTENSION | 1 |

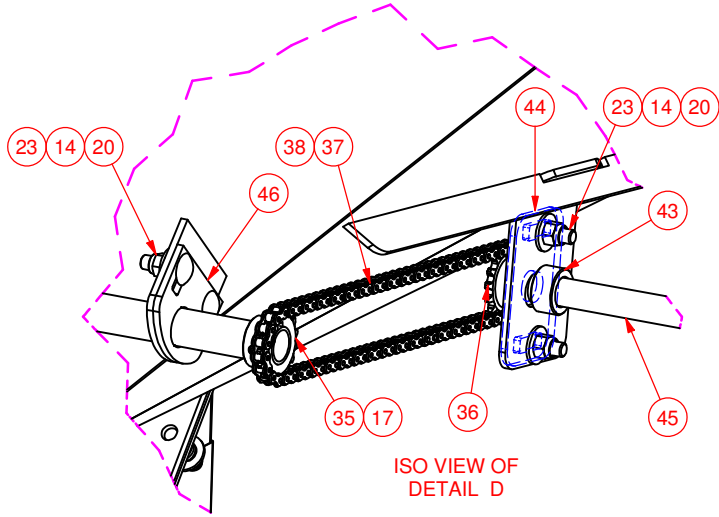


| | | | | |
|--|--|---|--|--|
| TOLERANCES UNLESS OTHERWISE SPECIFIED FRACTIONAL ±1/16 X.X ±0.1 X.XX ±0.04 X.XXX ±0.010 ANGULAR ±1° | | INCH FORMAT UNLESS OTHERWISE SPECIFIED  DO NOT SCALE DRAWING | | CONVEY-ALL INDUSTRIES INC. WINKLER, MB CANADA (204) 325-4195 |
| PART NO. BTS-290-SP-C | | TITLE BTS-290 BEAN TENDER SPLIT TANK (50/50) - CONTAINER | | |
| CREATED: 06/05/2010 | | MATERIAL | | REF NO. |
| REVISIONS: DESIGNED: FK | | SCALE: NTS | | WT: N/A |
| DRAWN: FK | | SHEET: 1 OF 4 | | |

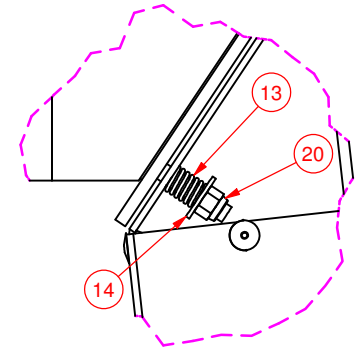
1
 PROPRIETARY AND CONFIDENTIAL
 THE INFORMATION CONTAINED IN THIS DRAWING IS THE SOLE PROPERTY OF CONVEY-ALL INDUSTRIES. ANY REPRODUCTION IN PART OR AS A WHOLE WITHOUT THE WRITTEN PERMISSION OF CONVEY-ALL IS PROHIBITED.



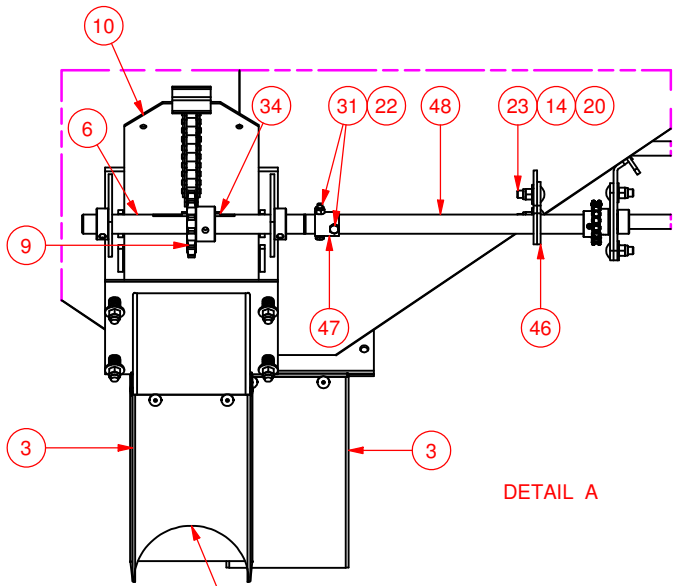
8



ISO VIEW OF
DETAIL D

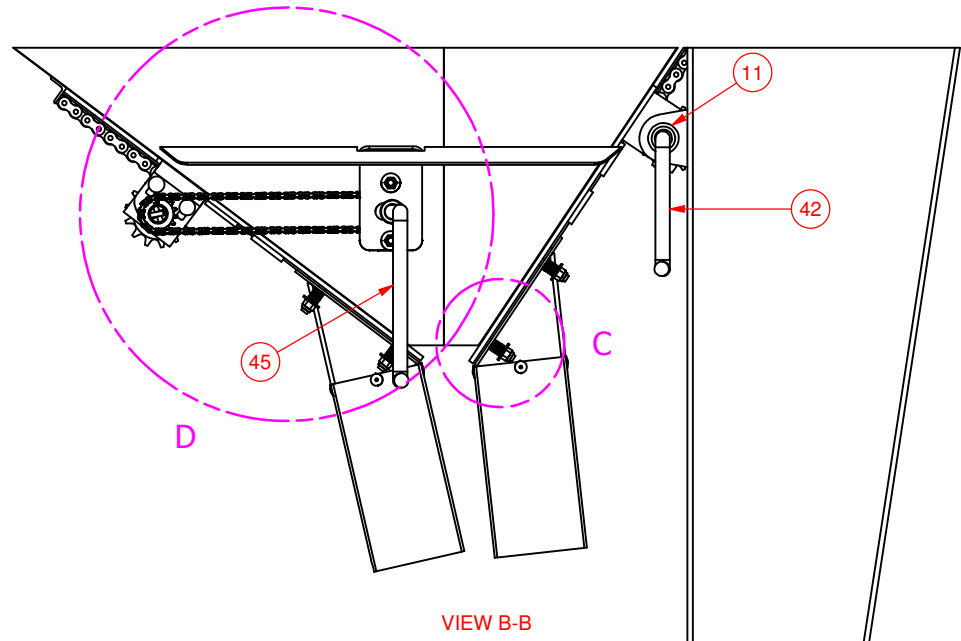


DETAIL C



DETAIL A

CUT 3" POCKET
(THIS SIDE ONLY)



VIEW B-B

| | |
|---------------------------------------|--------|
| TOLERANCES UNLESS OTHERWISE SPECIFIED | |
| FRACTIONAL | ±1/16 |
| X.X | ±0.1 |
| X.XX | ±0.04 |
| X.XXX | ±0.010 |
| ANGULAR | ±1° |

| | |
|--|--|
| INCH FORMAT UNLESS OTHERWISE SPECIFIED | |
| | |
| DO NOT SCALE DRAWING | |

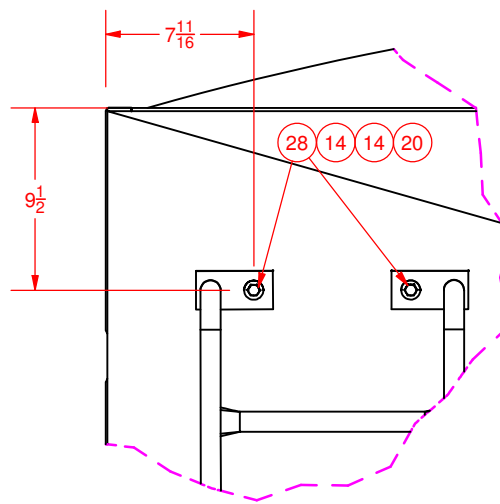
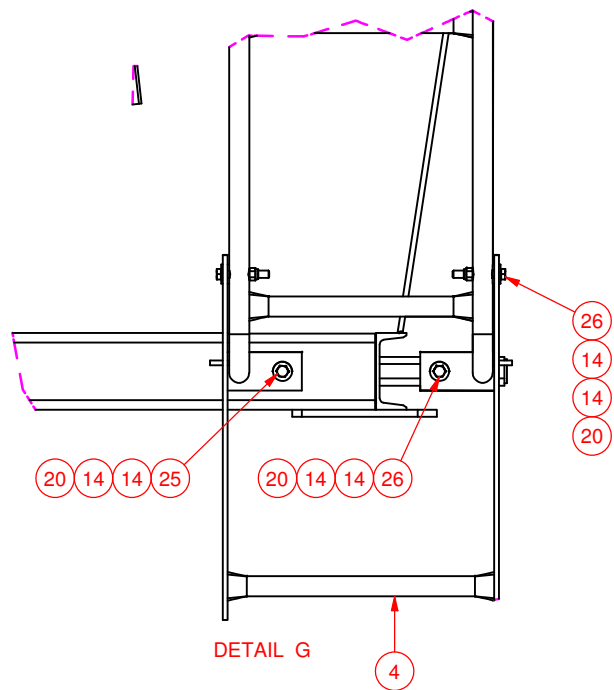
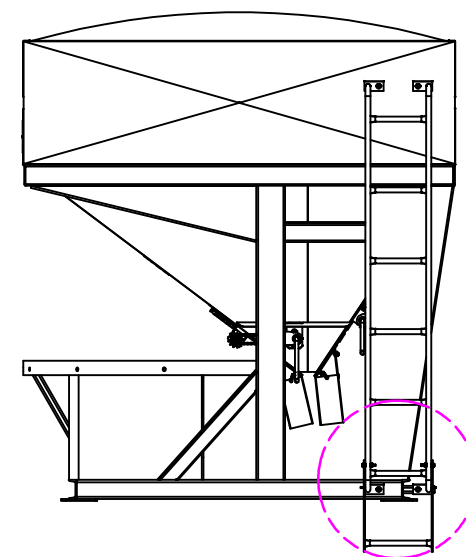
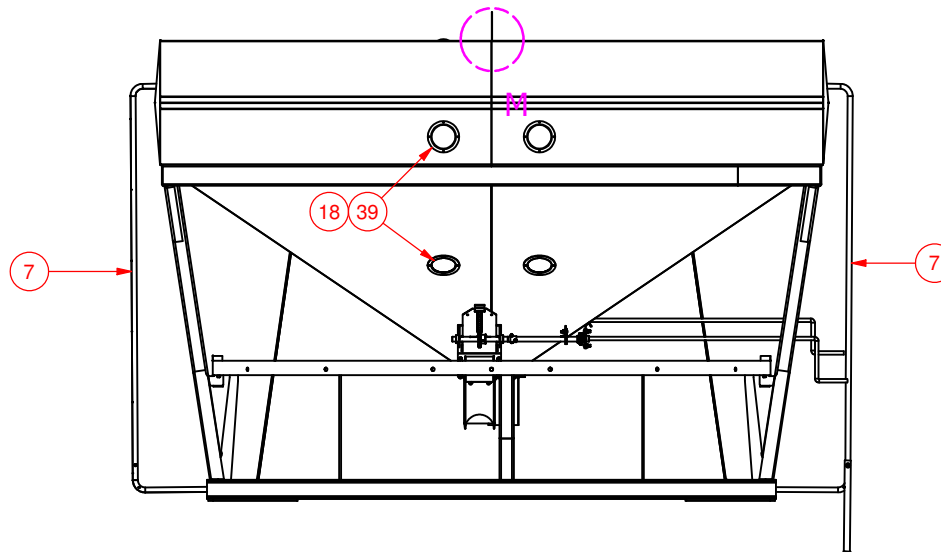
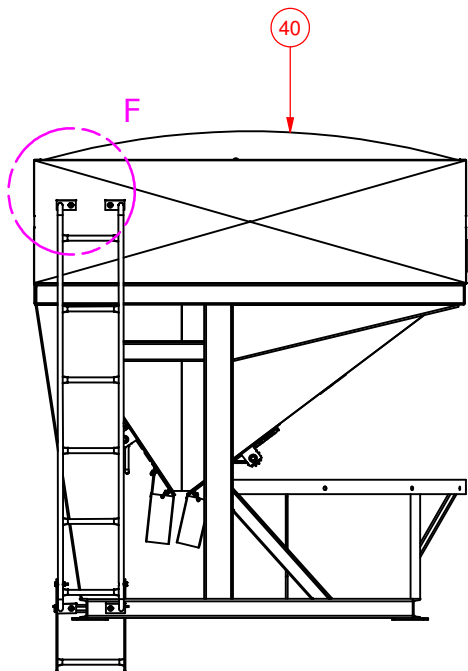
CONVEY-ALL
INDUSTRIES INC.

WINKLER, MB CANADA (204) 325-4195

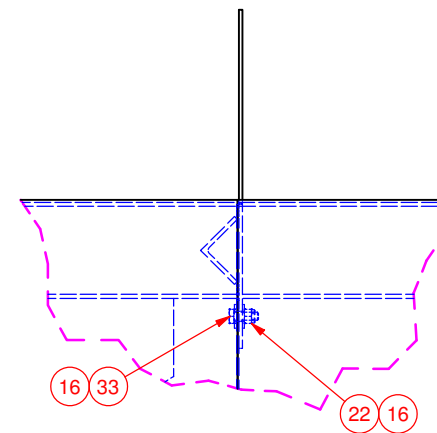
| | |
|-----------|--------------|
| PART NO. | BTS-290-SP-C |
| CREATED: | 06/05/2010 |
| REVISED: | |
| DESIGNED: | FK |
| DRAWN: | FK |

| | |
|---------------|--|
| TITLE | BTS-290 BEAN TENDER SPLIT TANK (50/50) - CONTAINER |
| MATERIAL | |
| SCALE: | NTS |
| WT: | N/A |
| REF NO. | |
| SHEET: 2 OF 4 | |

2 PROPRIETARY AND CONFIDENTIAL
THE INFORMATION CONTAINED IN THIS DRAWING IS THE
SOLE PROPERTY OF CONVEY-ALL INDUSTRIES. ANY
REPRODUCTION IN PART OR AS A WHOLE WITHOUT THE
WRITTEN PERMISSION OF CONVEY-ALL IS PROHIBITED.



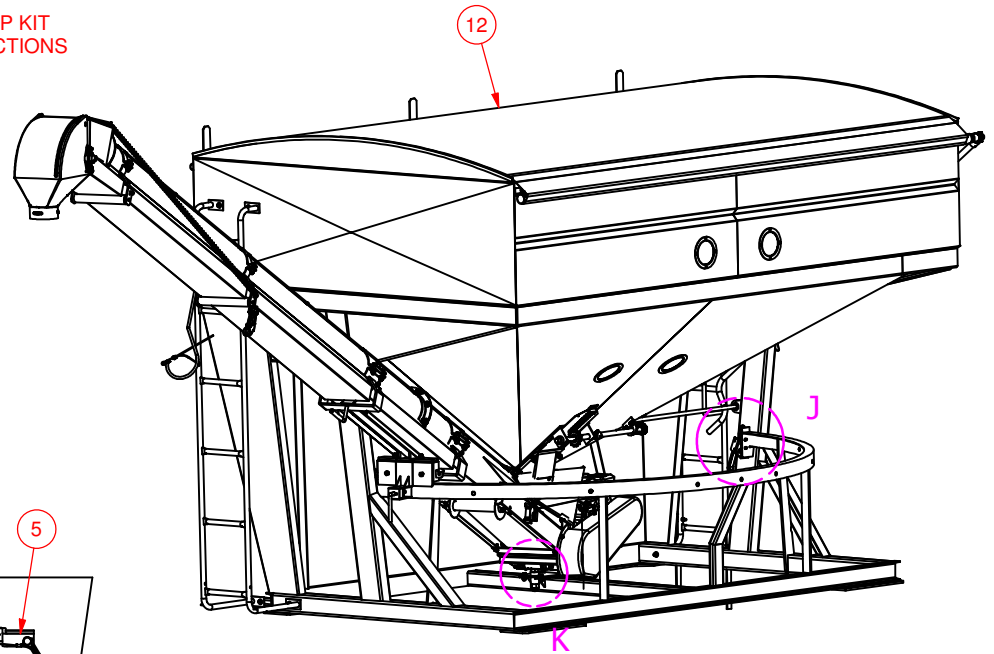
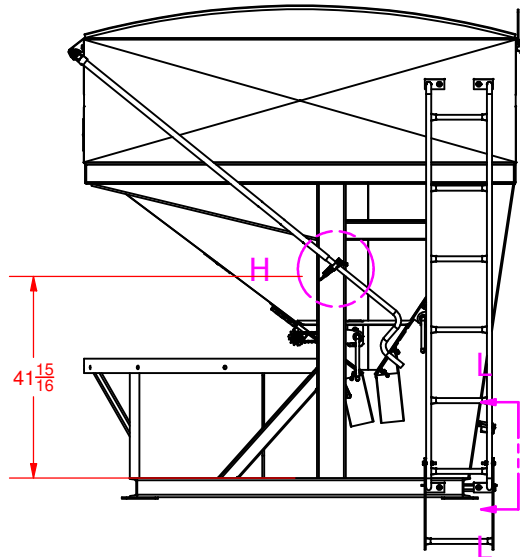
NOTE: USE LEVEL TO ENSURE
CORRECT INSTALLATION



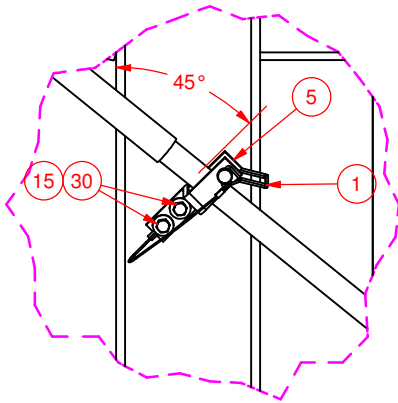
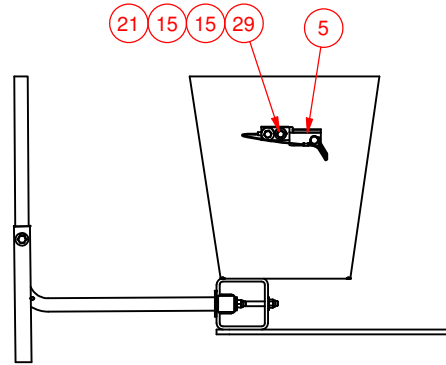
DETAIL M

| | | | | |
|---|--|---|--|--|
| TOLERANCES UNLESS OTHERWISE SPECIFIED FRACTIONAL ±1/16 X.X ±0.1 X.XX ±0.04 X.XXX ±0.010 ANGULAR ±1° | | INCH FORMAT UNLESS OTHERWISE SPECIFIED DO NOT SCALE DRAWING | | CONVEY-ALL INDUSTRIES INC. WINKLER, MB CANADA (204) 325-4195 |
| PART NO. BTS-290-SP-C | | TITLE BTS-290 BEAN TENDER SPLIT TANK (50/50) - CONTAINER | | |
| CREATED: 06/05/2010 | | MATERIAL | | REF NO. |
| REVISIONS 3 PROPRIETARY AND CONFIDENTIAL THE INFORMATION CONTAINED IN THIS DRAWING IS THE SOLE PROPERTY OF CONVEY-ALL INDUSTRIES. ANY REPRODUCTION IN PART OR AS A WHOLE WITHOUT THE WRITTEN PERMISSION OF CONVEY-ALL IS PROHIBITED. | | DESIGNED: FK DRAWN: FK | | SCALE: NTS WT: N/A SHEET: 3 OF 4 |

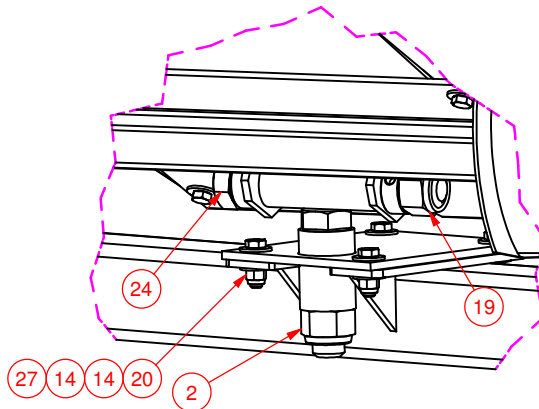
NOTE: INSTALL ROLL TARP KIT
AS PER INCLUDED INSTRUCTIONS



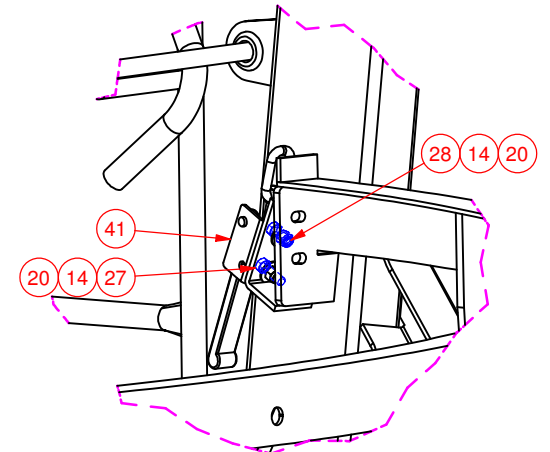
SECTION L-L



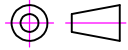
DETAIL H



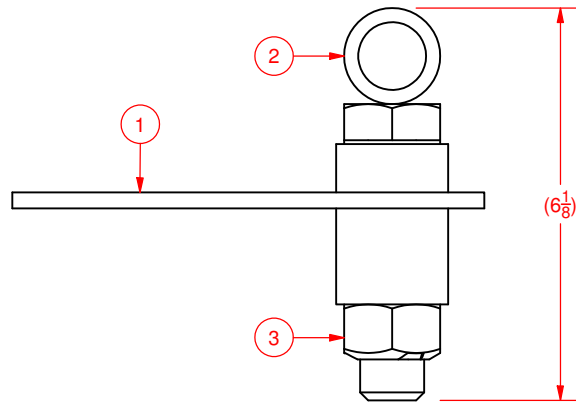
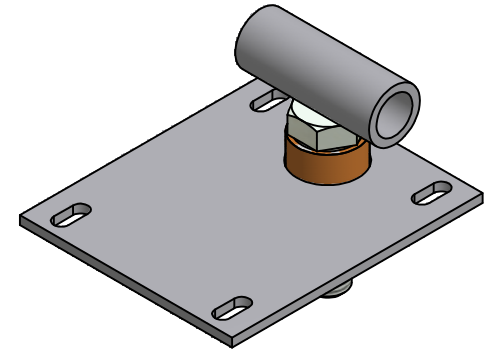
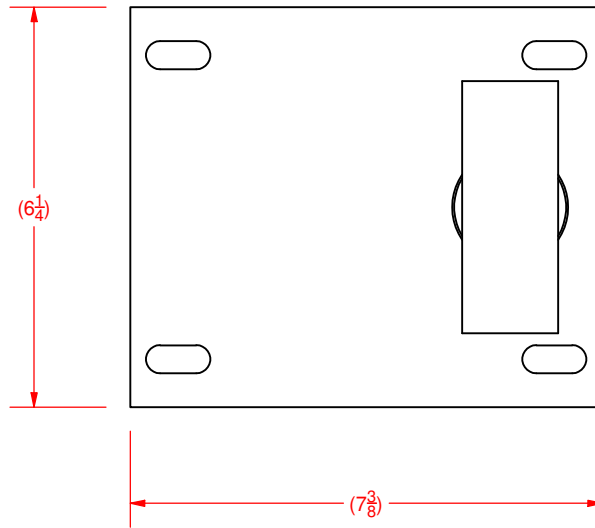
DETAIL K



DETAIL J

| | | | | | |
|--|--|---|--|--|--|
| TOLERANCES UNLESS OTHERWISE SPECIFIED FRACTIONAL ±1/16 .XX ±0.1 .XXX ±0.04 X.XXX ±0.010 ANGULAR ±1° | | INCH FORMAT UNLESS OTHERWISE SPECIFIED  DO NOT SCALE DRAWING | | CONVEY-ALL INDUSTRIES INC. WINKLER, MB CANADA (204) 325-4195 | |
| PART NO. BTS-290-SP-C | | TITLE BTS-290 BEAN TENDER SPLIT TANK (50/50) - CONTAINER | | | |
| CREATED: 06/05/2010 | | MATERIAL | | REF NO. | |
| REVISIONS: DESIGNED: FK | | SCALE: NTS | | WT: N/A | |
| DRAWN: FK | | SHEET: 4 OF 4 | | | |

4 PROPRIETARY AND CONFIDENTIAL
THE INFORMATION CONTAINED IN THIS DRAWING IS THE SOLE PROPERTY OF CONVEY-ALL INDUSTRIES. ANY REPRODUCTION IN PART OR AS A WHOLE WITHOUT THE WRITTEN PERMISSION OF CONVEY-ALL IS PROHIBITED.

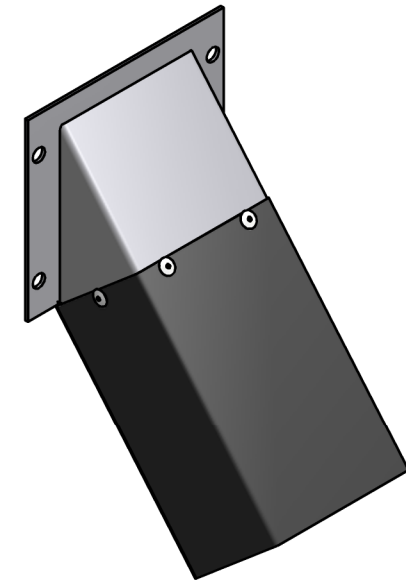
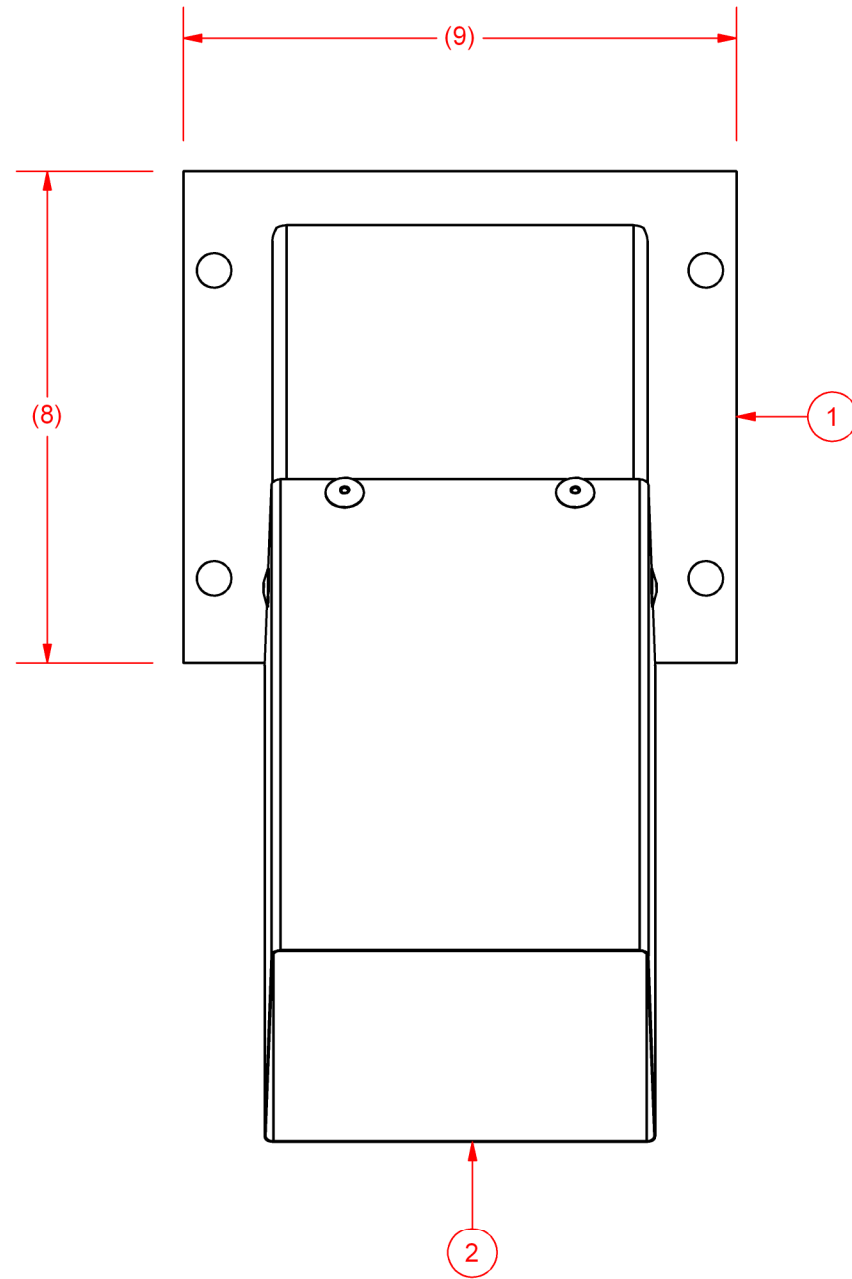
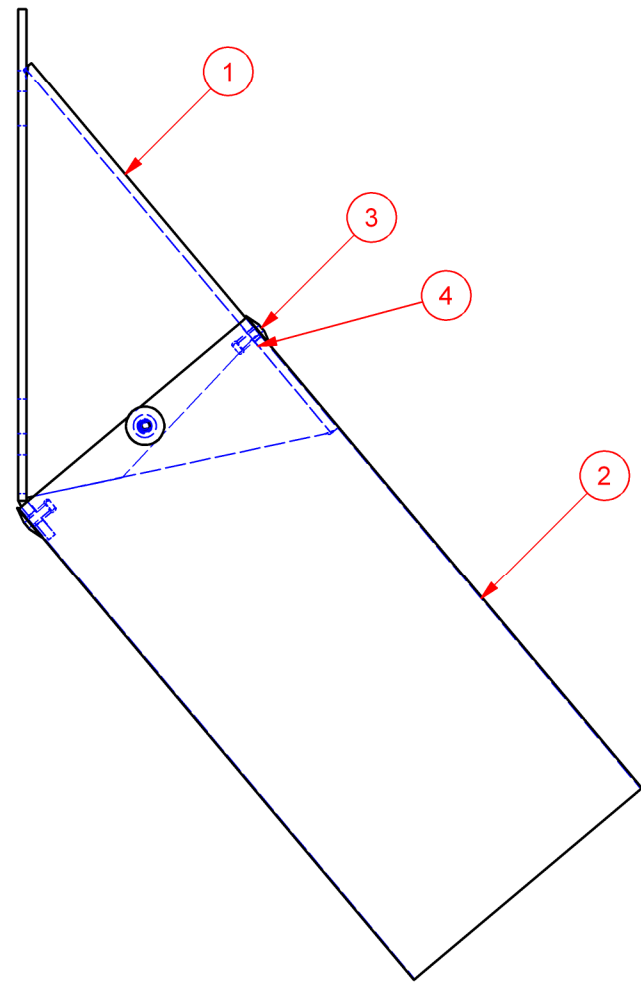


| ITEM | PART # | DESCRIPTION | QTY |
|------|--------------|---------------------------------------|-----|
| 1 | 502055 | BUSHING PLATE W/BRASS INSERT | 1 |
| 2 | 400054 | SWIVEL PIN | 1 |
| 3 | 16-2412-0003 | CONE LOCK NUT - 1" UNC - PLTD - GRD 5 | 1 |

5

PROPRIETARY AND CONFIDENTIAL
 THE INFORMATION CONTAINED IN THIS DRAWING IS THE
 SOLE PROPERTY OF CONVEY-ALL INDUSTRIES. ANY
 REPRODUCTION IN PART OR AS A WHOLE WITHOUT THE
 WRITTEN PERMISSION OF CONVEY-ALL IS PROHIBITED.

| | | | | | |
|--|--|--|--|--|--|
| TOLERANCES UNLESS OTHERWISE SPECIFIED FRACTIONAL ±1/16 X.X ±0.1 X.XX ±0.04 X.XXX ±0.010 ANGULAR ±1° | | INCH FORMAT UNLESS OTHERWISE SPECIFIED | | CONVEY-ALL INDUSTRIES INC. WINKLER, MB CANADA (204) 325-4195 | |
| PART NO. 501338 | | TITLE BIN-COMMON SWIVEL PIN ASSEMBLY | | | |
| CREATED: 27/07/2009 | | REVISED: 20/07/2009 | | MATERIAL | |
| DESIGNED: TF | | DRAWN: TF | | REF NO. | |
| SCALE: NTS | | WT: N/A | | SHEET: 1 OF 1 | |



| ITEM | PART # | DESCRIPTION | QTY |
|------|--------------|---------------------------------------|-----|
| 1 | 401263 | DISCHARGE CHUTE | 1 |
| 2 | 25-1000-0034 | DISCHARGE CHUTE FUNNEL | 1 |
| 3 | 16-1200-0009 | POP RIVET - 3/16" x 3/8" - LARGE HEAD | 6 |
| 4 | 16-1200-0007 | RIVET BACKUP PLATE - 3/16" | 6 |

TOLERANCES UNLESS OTHERWISE SPECIFIED
 FRACTIONAL ±1/16
 X.X ±0.1
 X.XX ±0.04
 X.XXX ±0.010
 ANGULAR ±1°

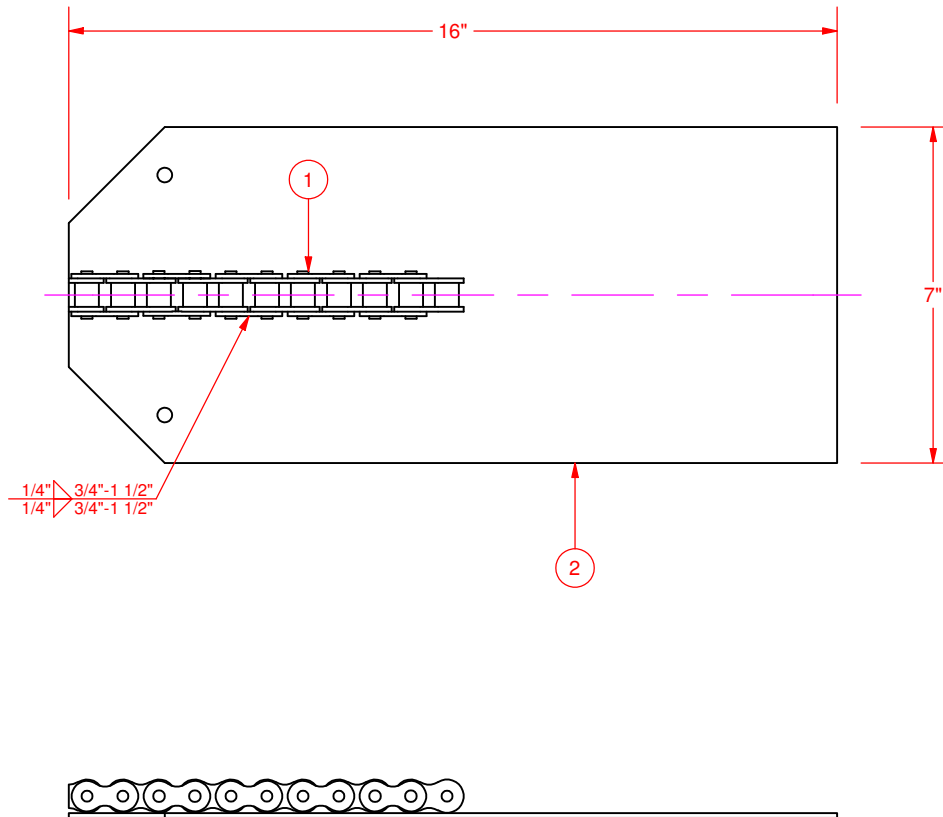
INCH FORMAT UNLESS OTHERWISE SPECIFIED

 DO NOT SCALE DRAWING

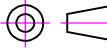
CONVEY-ALL
INDUSTRIES INC.
 WINKLER, MB CANADA (204) 325-4195

| | |
|---------------------------|--|
| PART NO. 501329 | TITLE BIN-COMMON DISCHARGE CHUTE ASSEMBLY |
| CREATED: 6/26/2009 | REF NO. |
| REVISED: 6/23/2009 | MATERIAL |
| DESIGNED: TF | DRAWN: TF |
| SCALE: NTS | WT: 4.7 lbmass |
| SHEET: 1 OF 1 | |

PROPRIETARY AND CONFIDENTIAL
 THE INFORMATION CONTAINED IN THIS DRAWING IS THE SOLE PROPERTY OF CONVEY-ALL INDUSTRIES. ANY REPRODUCTION IN PART OR AS A WHOLE WITHOUT THE WRITTEN PERMISSION OF CONVEY-ALL IS PROHIBITED.



TOLERANCES UNLESS OTHERWISE SPECIFIED
 FRACTIONAL ±1/16
 X.X ±0.1
 X.XX ±0.04
 X.XXX ±0.010
 ANGULAR ±1°

INCH FORMAT UNLESS OTHERWISE SPECIFIED

 DO NOT SCALE DRAWING

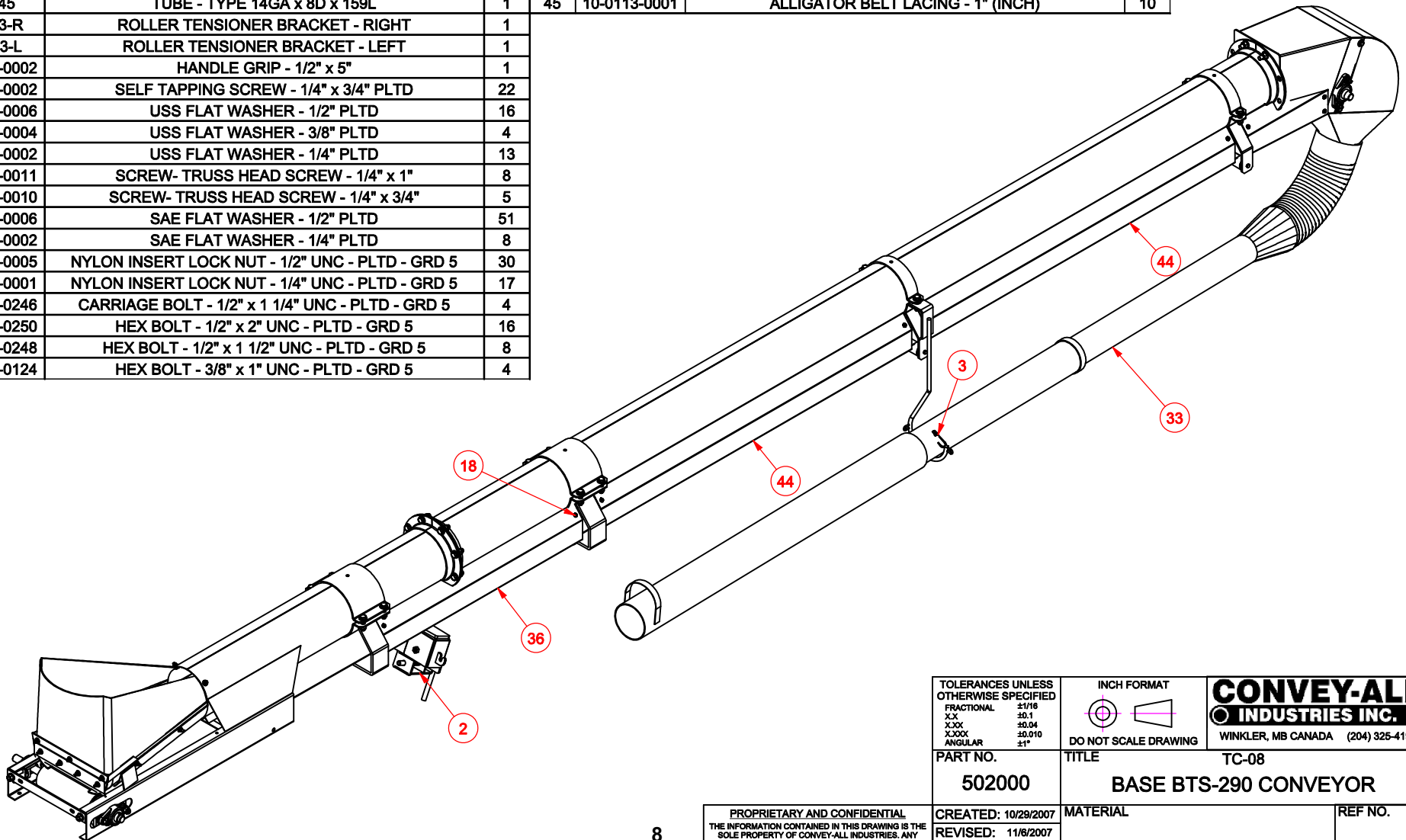
CONVEY-ALL
INDUSTRIES INC.
 WINKLER, MB CANADA (204) 325-4195

| | |
|---------------------------|--|
| PART NO. 400200 | TITLE BIN-COMMON DISCHARGE FLOW REGULATOR |
| CREATED: 08/06/2006 | MATERIAL |
| REVISED: 22/06/2008 | REF NO. |
| DESIGNED: EW | SCALE: NTS |
| DRAWN: EW | WT: 3.9 lbmass |
| SHEET: 1 OF 1 | |

| ITEM | PART # | DESCRIPTION | QTY |
|------|--------|------------------------------|-----|
| 1 | 100867 | ROLLER CHAIN - #60 - 6 LINKS | 1 |
| 2 | 100866 | DISCHARGE FLOW REGULATOR | 1 |

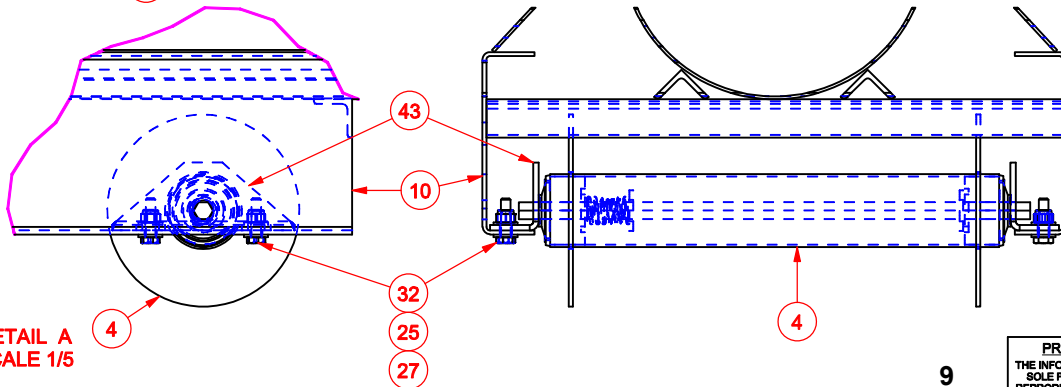
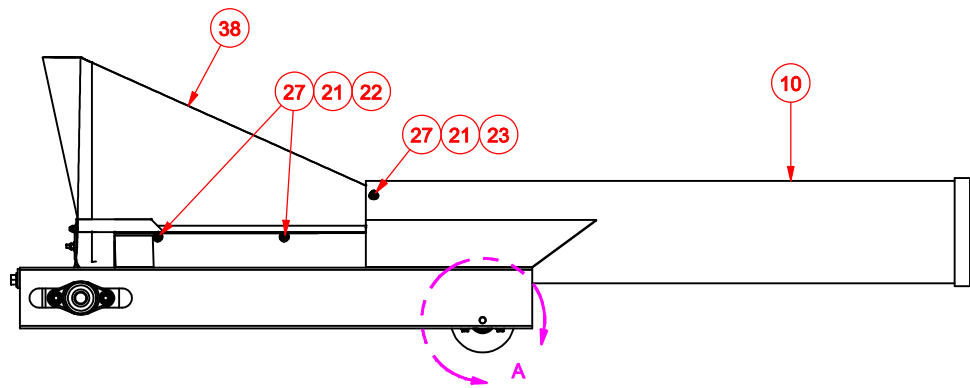
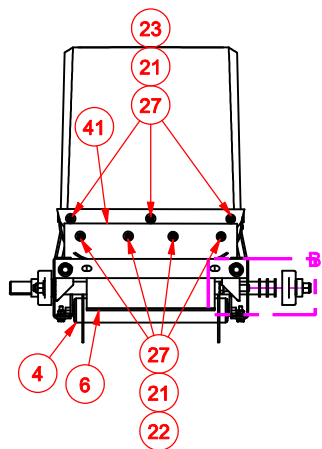
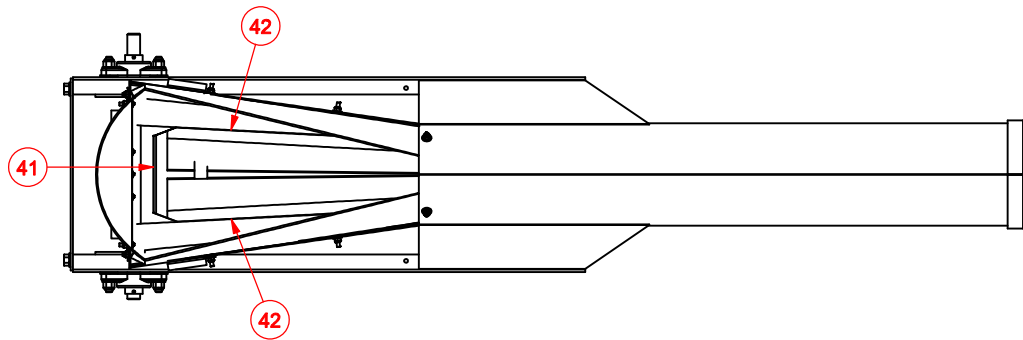
PROPRIETARY AND CONFIDENTIAL
 THE INFORMATION CONTAINED IN THIS DRAWING IS THE SOLE PROPERTY OF CONVEY-ALL INDUSTRIES. ANY REPRODUCTION IN PART OR AS A WHOLE WITHOUT THE WRITTEN PERMISSION OF CONVEY-ALL IS PROHIBITED.

| ITEM | PART # | DESCRIPTION | QTY | ITEM | PART # | DESCRIPTION | QTY |
|------|--------------|--|-----|------|--------------|---|-----|
| 1 | B-0000-0005 | BEARING - FL205 - 1 1/4" SHAFT - COMPLETE | 2 | 32 | 16-0207-0007 | HEX BOLT - 1/4" x 1" UNC - PLTD - GRD 5 | 4 |
| 2 | 502002 | LOCKING MECHANISM | 1 | 33 | 12-2900-0002 | 3 STAGE DOWN SPOUT | 1 |
| 3 | 502001 | DOWN SPOUT HOLD DOWN BUNGIE | 1 | 34 | 12-0305-0008 | SINGLE PLY RUBBER BELT - 10" (INCH) | 489 |
| 4 | 500026 | RETURN ROLLER FL- .4375 x 11.6875 x 13.4375 | 1 | 35 | 103014R | BT WINDGUARD - ROLLER BRACKET - RIGHT | 1 |
| 5 | 500025 | RETURN ROLLER - 7/16 x 11-11/16 x 13-7/16 | 2 | 36 | 103014L | BT WINDGUARD - ROLLER BRACKET - LEFT | 1 |
| 6 | 500024 | ROLLER - TYPE 3 x 10L x 1 | 1 | 37 | 103013 | BT WINDGUARD - DISCHARGE | 1 |
| 7 | 500023 | BEAN TENDER DISCHARGE HOOD | 1 | 38 | 103001 | RUBBER HOPPER | 1 |
| 8 | 402004 | MID HOOK | 1 | 39 | 101086 | TUBE CLAMP - TYPE 2 | 2 |
| 9 | 402002 | ROLLER BRACKET TUBE SUPPORT | 1 | 40 | 101084 | TUBE CLAMP - TYPE 6 | 2 |
| 10 | 402001 | BTS-290 HOPPER | 1 | 41 | 100499 | RUBBER FLASHING - END | 1 |
| 11 | 400135 | THREADED ROD - TYPE 4 3/4 x 1/2D | 2 | 42 | 100498 | RUBBER FLASHING - SIDE | 2 |
| 12 | 400108 | RETURN ROLLER BRACKET W/ MTG PLATE | 2 | 43 | 100489 | RETURN ROLLER MOUNT BRACKET | 2 |
| 13 | 400104 | BEAN TENDER DISCHARGE SPOUT | 1 | 44 | 100487 | WINDGUARD - TYPE 60 - ENCLOSED | 2 |
| 14 | 400045 | TUBE - TYPE 14GA x 8D x 159L | 1 | 45 | 10-0113-0001 | ALLIGATOR BELT LACING - 1" (INCH) | 10 |
| 15 | 400013-R | ROLLER TENSIONER BRACKET - RIGHT | 1 | | | | |
| 16 | 400013-L | ROLLER TENSIONER BRACKET - LEFT | 1 | | | | |
| 17 | 24-5000-0002 | HANDLE GRIP - 1/2" x 5" | 1 | | | | |
| 18 | 24-2200-0002 | SELF TAPPING SCREW - 1/4" x 3/4" PLTD | 22 | | | | |
| 19 | 16-1707-0006 | USS FLAT WASHER - 1/2" PLTD | 16 | | | | |
| 20 | 16-1707-0004 | USS FLAT WASHER - 3/8" PLTD | 4 | | | | |
| 21 | 16-1707-0002 | USS FLAT WASHER - 1/4" PLTD | 13 | | | | |
| 22 | 16-1400-0011 | SCREW- TRUSS HEAD SCREW - 1/4" x 1" | 8 | | | | |
| 23 | 16-1400-0010 | SCREW- TRUSS HEAD SCREW - 1/4" x 3/4" | 5 | | | | |
| 24 | 16-1307-0006 | SAE FLAT WASHER - 1/2" PLTD | 51 | | | | |
| 25 | 16-1307-0002 | SAE FLAT WASHER - 1/4" PLTD | 8 | | | | |
| 26 | 16-0707-0005 | NYLON INSERT LOCK NUT - 1/2" UNC - PLTD - GRD 5 | 30 | | | | |
| 27 | 16-0707-0001 | NYLON INSERT LOCK NUT - 1/4" UNC - PLTD - GRD 5 | 17 | | | | |
| 28 | 16-0307-0246 | CARRIAGE BOLT - 1/2" x 1 1/4" UNC - PLTD - GRD 5 | 4 | | | | |
| 29 | 16-0207-0250 | HEX BOLT - 1/2" x 2" UNC - PLTD - GRD 5 | 16 | | | | |
| 30 | 16-0207-0248 | HEX BOLT - 1/2" x 1 1/2" UNC - PLTD - GRD 5 | 8 | | | | |
| 31 | 16-0207-0124 | HEX BOLT - 3/8" x 1" UNC - PLTD - GRD 5 | 4 | | | | |

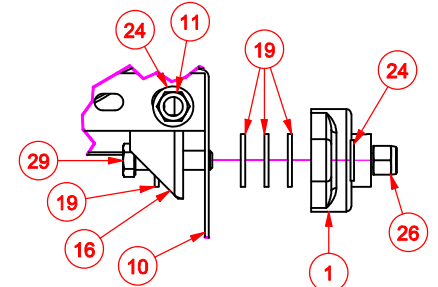


| | | | | |
|---------------------------------------|-----------------------|---------------|----------------------|-----------------------------------|
| TOLERANCES UNLESS OTHERWISE SPECIFIED | | INCH FORMAT | | CONVEY-ALL INDUSTRIES INC. |
| FRACTIONAL | ±1/16 | | DO NOT SCALE DRAWING | |
| XX | ±0.1 | | | WINKLER, MB CANADA (204) 325-4195 |
| XXX | ±0.04 | | | |
| XXXX | ±0.010 | | | |
| ANGULAR | ±1° | | | |
| PART NO. | TITLE | | | |
| 502000 | TC-08 | | | |
| | BASE BTS-290 CONVEYOR | | | |
| MATERIAL | | REF NO. | | |
| CREATED: 10/29/2007 | | DRAWN: FK | | |
| REVISED: 11/6/2007 | | SCALE: 1:20 | | |
| SQ. IN. | | SHEET: 1 OF 4 | | |

PROPRIETARY AND CONFIDENTIAL
 THE INFORMATION CONTAINED IN THIS DRAWING IS THE SOLE PROPERTY OF CONVEY-ALL INDUSTRIES. ANY REPRODUCTION IN PART OR AS A WHOLE WITHOUT THE WRITTEN PERMISSION OF CONVEY-ALL IS PROHIBITED.



DETAIL B
SCALE 1/5
LEFT & RIGHT SIDE



DETAIL A
SCALE 1/5

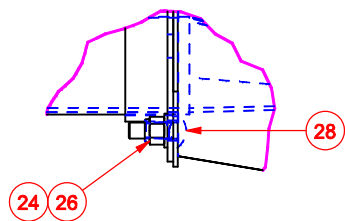
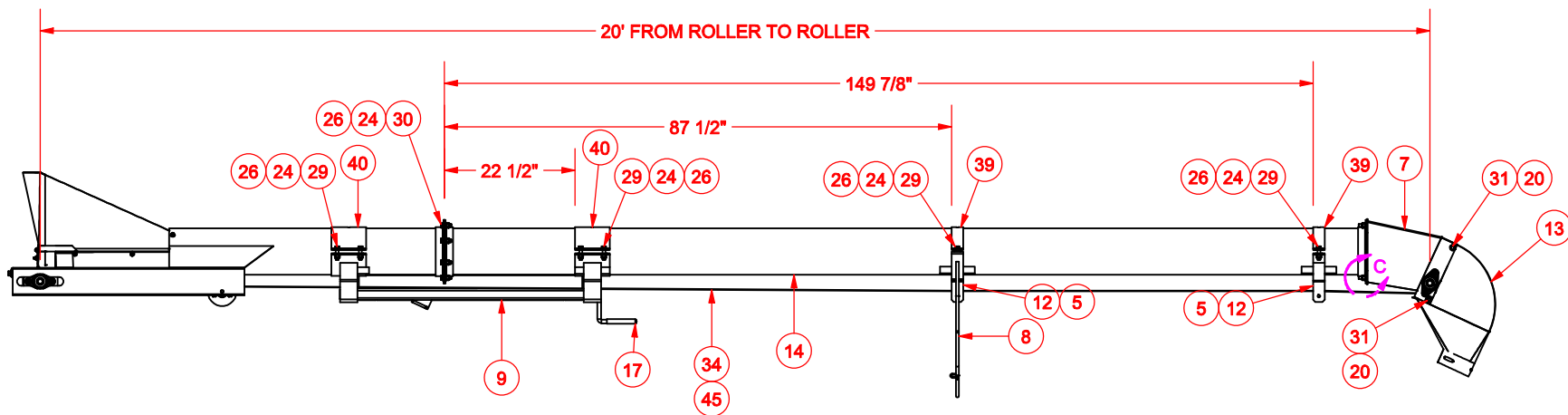
| | |
|---------------------------------------|--------|
| TOLERANCES UNLESS OTHERWISE SPECIFIED | |
| FRACTIONAL | ±1/16 |
| XX | ±0.1 |
| X.XX | ±0.04 |
| X.XXX | ±0.010 |
| ANGULAR | ±1° |

| | |
|----------------------|--|
| INCH FORMAT | |
| | |
| DO NOT SCALE DRAWING | |

CONVEY-ALL INDUSTRIES INC.
WINKLER, MB CANADA (204) 325-4195

| | | | |
|---------------------------|---------------------------------------|---------|---------------|
| PART NO. 502000 | TITLE BASE BTS-290 CONVEYOR | TC-08 | REF NO. |
| CREATED: 10/29/2007 | MATERIAL | | |
| REVISED: 11/6/2007 | SCALE: 1:20 | SQ. IN. | SHEET: 2 OF 4 |
| DRAWN: FK | | | |

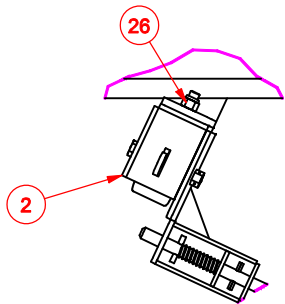
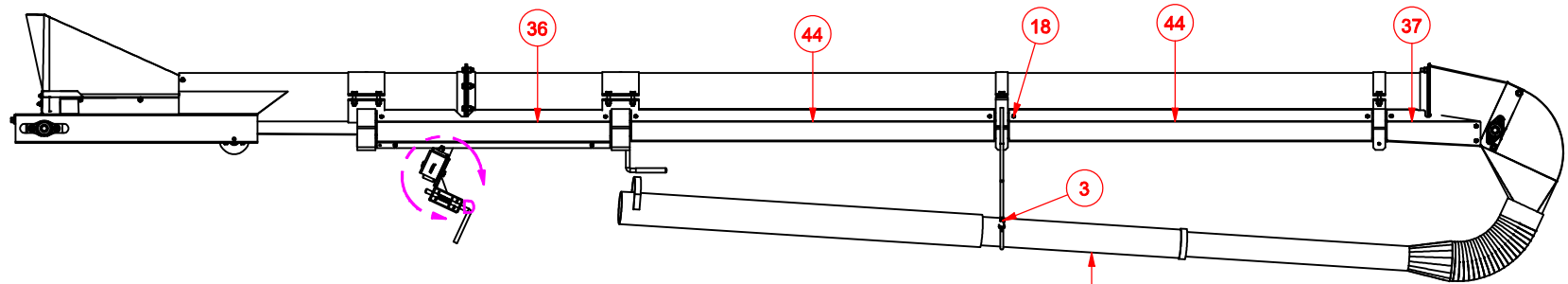
PROPRIETARY AND CONFIDENTIAL
THE INFORMATION CONTAINED IN THIS DRAWING IS THE SOLE PROPERTY OF CONVEY-ALL INDUSTRIES. ANY REPRODUCTION IN PART OR AS A WHOLE WITHOUT THE WRITTEN PERMISSION OF CONVEY-ALL IS PROHIBITED.



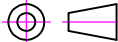
DETAIL C
SCALE 1 / 6

| | | | |
|---|---|---|--|
| TOLERANCES UNLESS OTHERWISE SPECIFIED FRACTIONAL ±1/16 XX ±0.1 XXX ±0.04 XXXX ±0.010 ANGULAR ±1° | | INCH FORMAT DO NOT SCALE DRAWING | CONVEY-ALL INDUSTRIES INC. WINKLER, MB CANADA (204) 325-4195 |
| PART NO. 502000 | TITLE TC-08 BASE BTS-290 CONVEYOR | | |
| CREATED: 10/29/2007 REVISED: 11/6/2007 DRAWN: FK | MATERIAL | REF NO. | |
| SCALE: 1:20 | SQ. IN. | SHEET: 3 OF 4 | |

PROPRIETARY AND CONFIDENTIAL
 THE INFORMATION CONTAINED IN THIS DRAWING IS THE
 SOLE PROPERTY OF CONVEY-ALL INDUSTRIES. ANY
 REPRODUCTION IN PART OR AS A WHOLE WITHOUT THE
 WRITTEN PERMISSION OF CONVEY-ALL IS PROHIBITED.

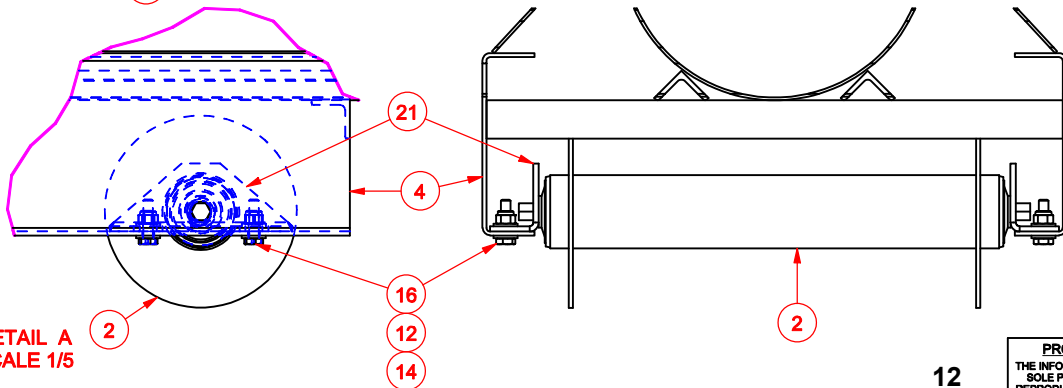
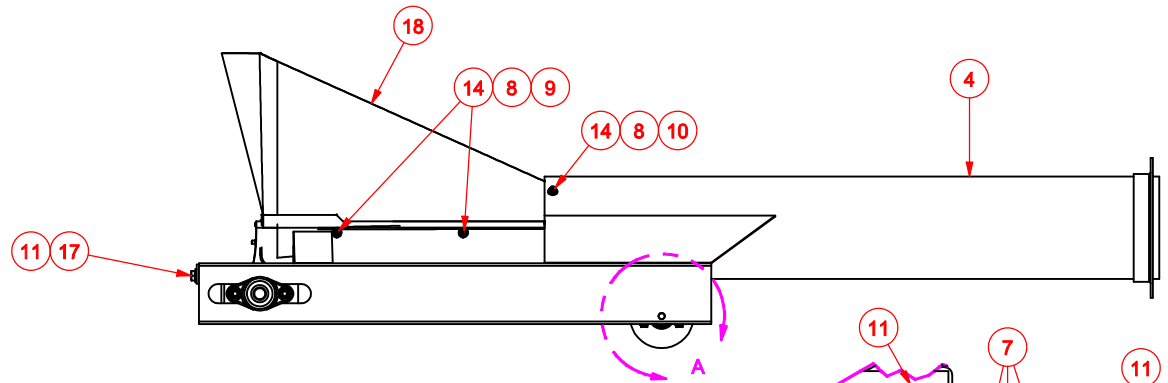
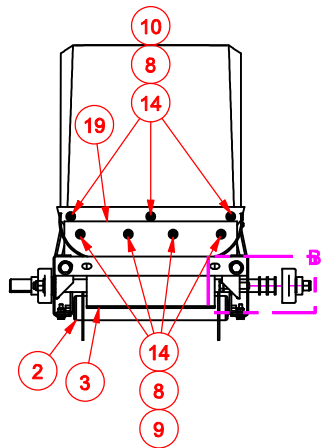
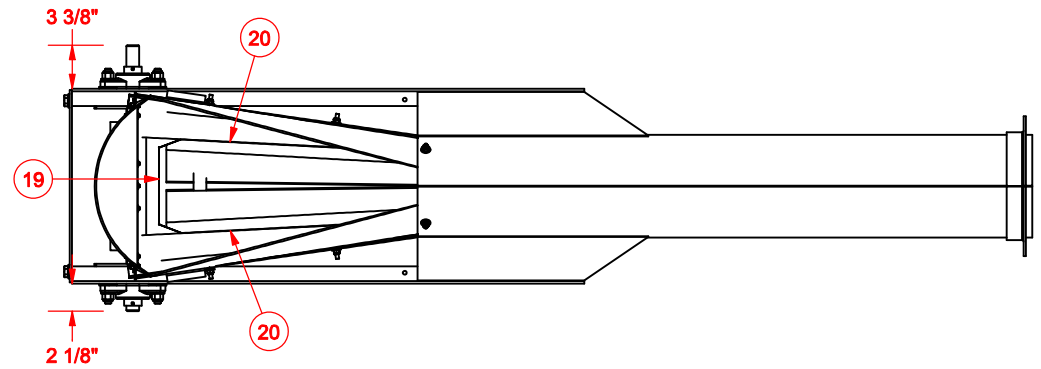


DETAIL D
SCALE 1 / 10

| | | | | | |
|---|--|--|--|--|--|
| TOLERANCES UNLESS OTHERWISE SPECIFIED FRACTIONAL ±1/16 XX ±0.1 XXX ±0.04 XXXX ±0.010 ANGULAR ±1° | | INCH FORMAT  DO NOT SCALE DRAWING | | CONVEY-ALL INDUSTRIES INC. WINKLER, MB CANADA (204) 325-4195 | |
| PART NO. 502000 | | TITLE TC-08 BASE BTS-290 CONVEYOR | | | |
| CREATED: 10/29/2007 REVISED: 11/6/2007 DRAWN: FK | | MATERIAL | | REF NO. | |
| SCALE: 1:20 | | SQ. IN. | | SHEET: 4 OF 4 | |

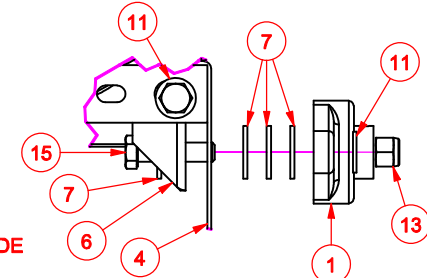
PROPRIETARY AND CONFIDENTIAL
 THE INFORMATION CONTAINED IN THIS DRAWING IS THE
 SOLE PROPERTY OF CONVEY-ALL INDUSTRIES. ANY
 REPRODUCTION IN PART OR AS A WHOLE WITHOUT THE
 WRITTEN PERMISSION OF CONVEY-ALL IS PROHIBITED.

| ITEM | PART # | DESCRIPTION | QTY |
|------|--------------|---|-----|
| 1 | B-0000-0005 | BEARING - FL205 - 1" SHAFT - COMPLETE | 2 |
| 2 | 500026 | RETURN ROLLER FL- .4375 x 11.6875 x 13.4375 | 1 |
| 3 | 500024 | ROLLER - TYPE 3 x 10L x 1 | 1 |
| 4 | 402001 | BTS-290 HOPPER FRAME | 1 |
| 5 | 400013-R | ROLLER TENSIONER BRACKET - RIGHT | 1 |
| 6 | 400013-L | ROLLER TENSIONER BRACKET - LEFT | 1 |
| 7 | 16-1707-0006 | USS FLAT WASHER - 1/2" PLTD | 16 |
| 8 | 16-1707-0002 | USS FLAT WASHER - 1/4" PLTD | 13 |
| 9 | 16-1400-0011 | SCREW- TRUSS HEAD SCREW - 1/4" x 1" | 8 |
| 10 | 16-1400-0010 | SCREW- TRUSS HEAD SCREW - 1/4" x 3/4" | 5 |
| 11 | 16-1307-0006 | SAE FLAT WASHER - 1/2" PLTD | 6 |
| 12 | 16-1307-0002 | SAE FLAT WASHER - 1/4" PLTD | 8 |
| 13 | 16-0707-0005 | NYLON INSERT LOCK NUT - 1/2" UNC - PLTD - GRD 5 | 4 |
| 14 | 16-0707-0001 | NYLON INSERT LOCK NUT - 1/4" UNC - PLTD - GRD 5 | 17 |
| 15 | 16-0207-0250 | HEX BOLT - 1/2" x 2" UNC - PLTD - GRD 5 | 4 |
| 16 | 16-0207-0007 | HEX BOLT - 1/4" x 1" UNC - PLTD - GRD 5 | 4 |
| 17 | 16-0207-0001 | HEX BOLT - 1/2" x 6" UNC - PLTD - GRD 5 FULL THRD | 2 |
| 18 | 103001 | RUBBER HOPPER | 1 |
| 19 | 100499 | RUBBER FLASHING - END | 1 |
| 20 | 100498 | RUBBER FLASHING - SIDE | 2 |
| 21 | 100489 | RETURN ROLLER MOUNT BRACKET | 2 |



DETAIL A
SCALE 1/5

DETAIL B
SCALE 1/5
LEFT & RIGHT SIDE



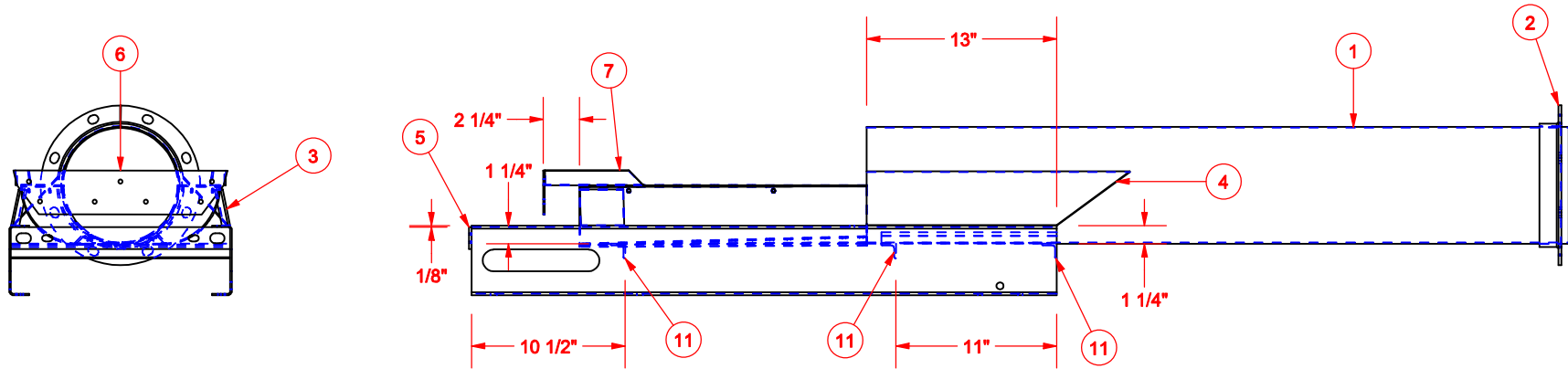
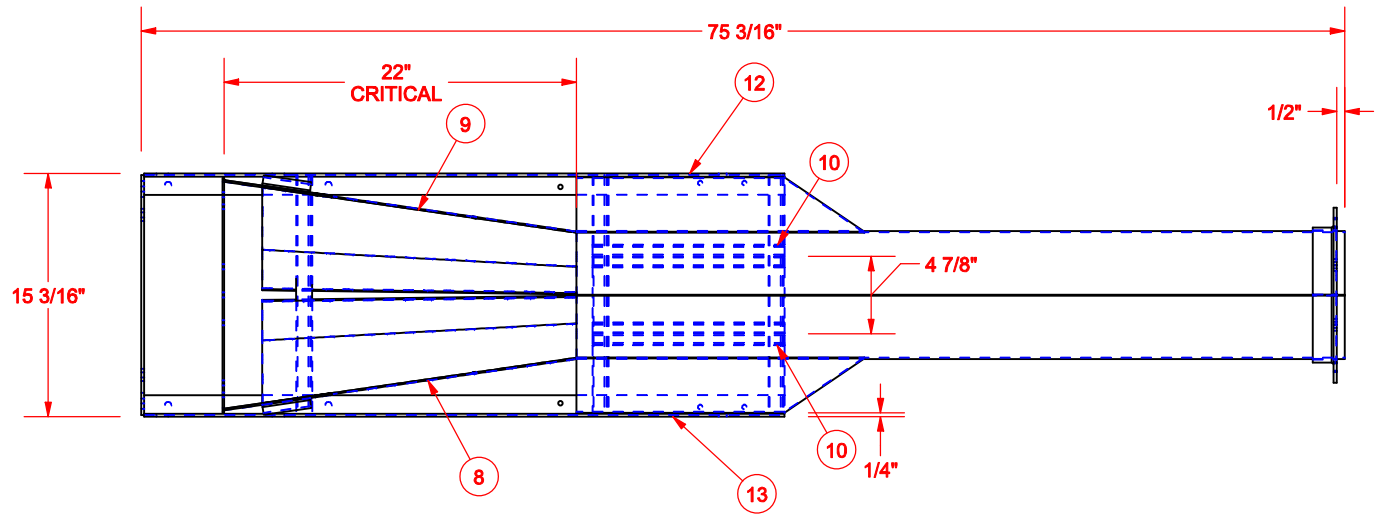
| TOLERANCES UNLESS OTHERWISE SPECIFIED | |
|---------------------------------------|--------|
| FRACTIONAL | ±1/16 |
| XX | ±0.1 |
| XXX | ±0.04 |
| XXXX | ±0.010 |
| ANGULAR | ±1° |

| INCH FORMAT UNLESS OTHERWISE SPECIFIED | |
|--|--|
| | |
| DO NOT SCALE DRAWING | |

CONVEY-ALL INDUSTRIES INC.
WINKLER, MB CANADA (204) 325-4195

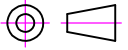
| | | |
|---------------------------|--------------------------------|--------------|
| PART NO. 502039 | TITLE BTS-290 HOPPER | TC-08 |
| CREATED: 10/29/2007 | REVISD: 6/18/2008 | DESIGNED: FK |
| REF NO. | MATERIAL | SCALE: NTS |
| WT: NA | SHEET: 1 OF 1 | |

PROPRIETARY AND CONFIDENTIAL
THE INFORMATION CONTAINED IN THIS DRAWING IS THE SOLE PROPERTY OF CONVEY-ALL INDUSTRIES. ANY REPRODUCTION IN PART OR AS A WHOLE WITHOUT THE WRITTEN PERMISSION OF CONVEY-ALL IS PROHIBITED.



| ITEM | PART # | DESCRIPTION | QTY |
|------|----------|----------------------------------|-----|
| 1 | 101093 | TUBE SECTION - 14GA x 8D x 48L | 1 |
| 2 | 101057 | 8" TUBE FLANGE | 1 |
| 3 | 100494 | HOPPER FLOW PANEL GUSSET | 2 |
| 4 | 100493 | HOPPER TUBE GUSSET | 2 |
| 5 | 100192 | HOPPER FRAME TENSIONER BRACE | 1 |
| 6 | 100190 | HOPPER BELT MOUNTING PLATE | 1 |
| 7 | 100189 | HOPPER BELT MOUNTING PLATE BRACE | 2 |
| 8 | 100188-R | HOPPER FLOW PANEL - RIGHT | 1 |
| 9 | 100188-L | HOPPER FLOW PANEL - LEFT | 1 |
| 10 | 100186 | HOPPER FRAME TUBE SUPPORT | 2 |
| 11 | 100185 | HOPPER FRAME CROSS BRACE | 3 |
| 12 | 100184-R | HOPPER CHANNEL - RIGHT | 1 |
| 13 | 100184-L | HOPPER CHANNEL - LEFT | 1 |

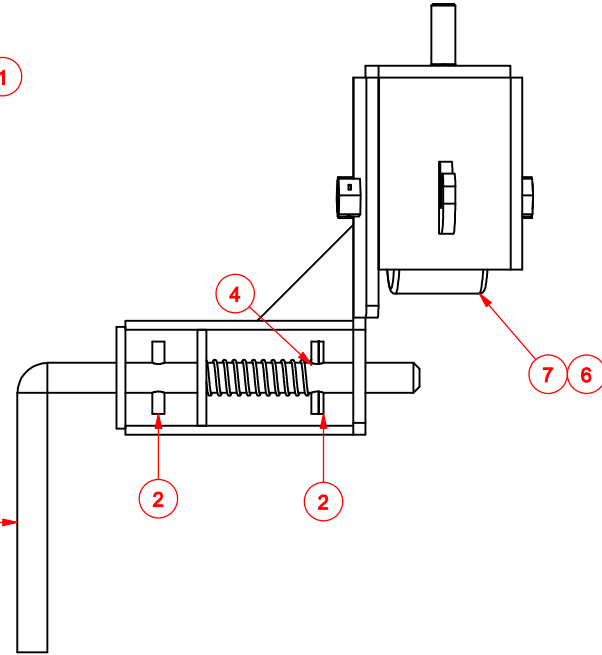
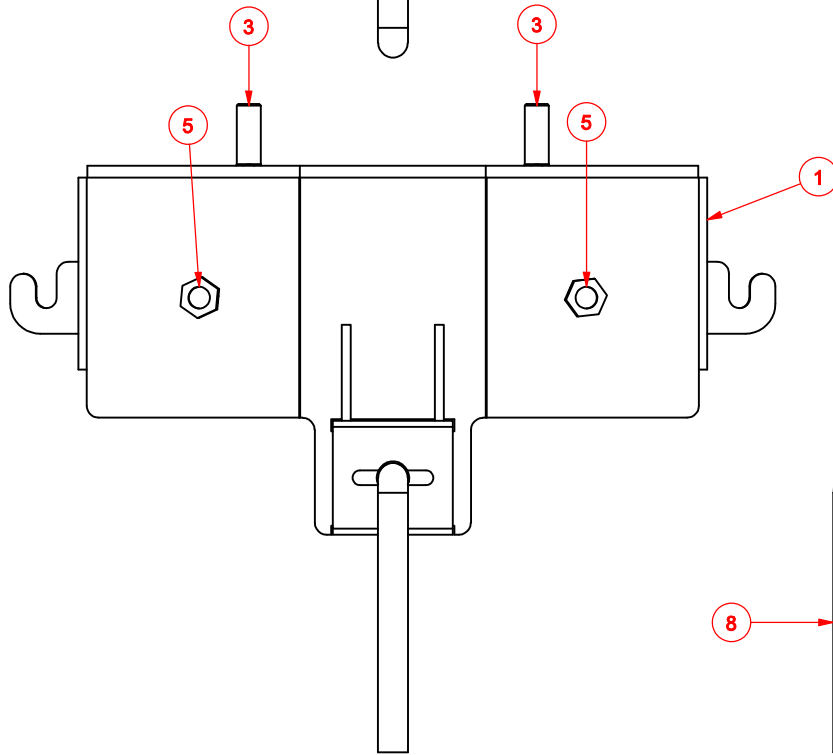
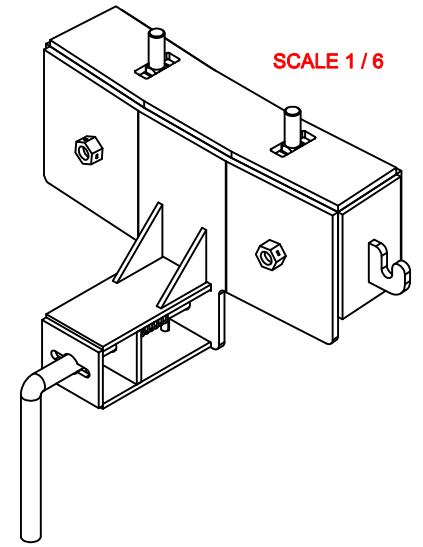
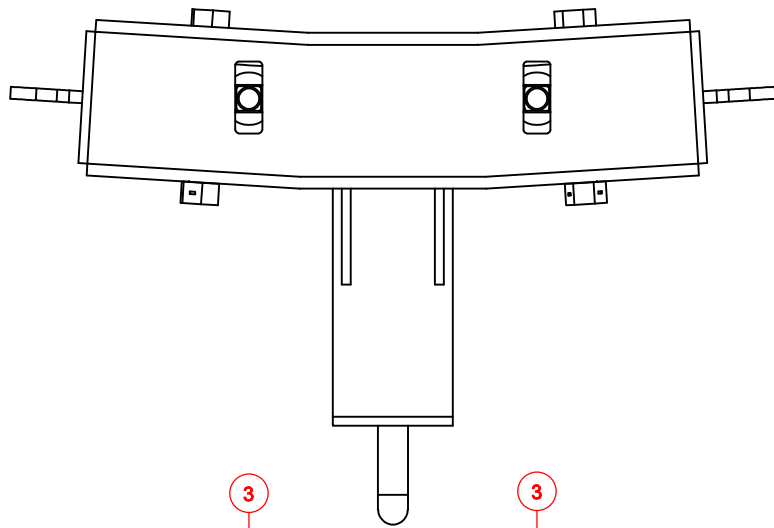
TOLERANCES UNLESS OTHERWISE SPECIFIED
 FRACTIONAL ±1/16
 XX ±0.1
 XXX ±0.04
 XXXX ±0.010
 ANGULAR ±1°

INCH FORMAT UNLESS OTHERWISE SPECIFIED

 DO NOT SCALE DRAWING

CONVEY-ALL INDUSTRIES INC.
 WINKLER, MB CANADA (204) 325-4195

| | | | |
|---------------------------|---|---------------|-----------|
| PART NO. 402001 | TITLE TC - 08 BTS-290 HOPPER FRAME | MATERIAL | REF NO. |
| CREATED: 10/25/2005 | REVISD: 4/25/2008 | DESIGNED: FK | DRAWN: FK |
| SCALE: NTS | WT: NA | SHEET: 1 OF 1 | |

PROPRIETARY AND CONFIDENTIAL
 THE INFORMATION CONTAINED IN THIS DRAWING IS THE SOLE PROPERTY OF CONVEY-ALL INDUSTRIES. ANY REPRODUCTION IN PART OR AS A WHOLE WITHOUT THE WRITTEN PERMISSION OF CONVEY-ALL IS PROHIBITED.



| ITEM | PART # | DESCRIPTION | QTY |
|------|--------------|--|-----|
| 1 | 402005 | ROLLER BRACKET LOCKING MECHANISM | 1 |
| 2 | 16-1100-0024 | ROLL PIN - 1/4" x 1 1/2" | 2 |
| 3 | 16-0307-0246 | CARRIAGE BOLT - 1/2" x 1 1/4" UNC - PLTD - GRD 5 | 2 |
| 4 | 12-2800-0011 | COMPRESSION SPRING - 5/8" I.D. x 3 1/2" | 1 |
| 5 | 12-1801-0009 | WHEEL - CASTER - AXLE & NUT | 2 |
| 6 | 12-1801-0008 | WHEEL - CASTER - SPRING BUSHING | 2 |
| 7 | 12-1801-0007 | 4" CASTER WHEEL | 2 |
| 8 | 101401 | LOCK MECHANISM HANDLE | 1 |

PROPRIETARY AND CONFIDENTIAL
 THE INFORMATION CONTAINED IN THIS DRAWING IS THE
 SOLE PROPERTY OF CONVEY-ALL INDUSTRIES. ANY
 REPRODUCTION IN PART OR AS A WHOLE WITHOUT THE
 WRITTEN PERMISSION OF CONVEY-ALL IS PROHIBITED.

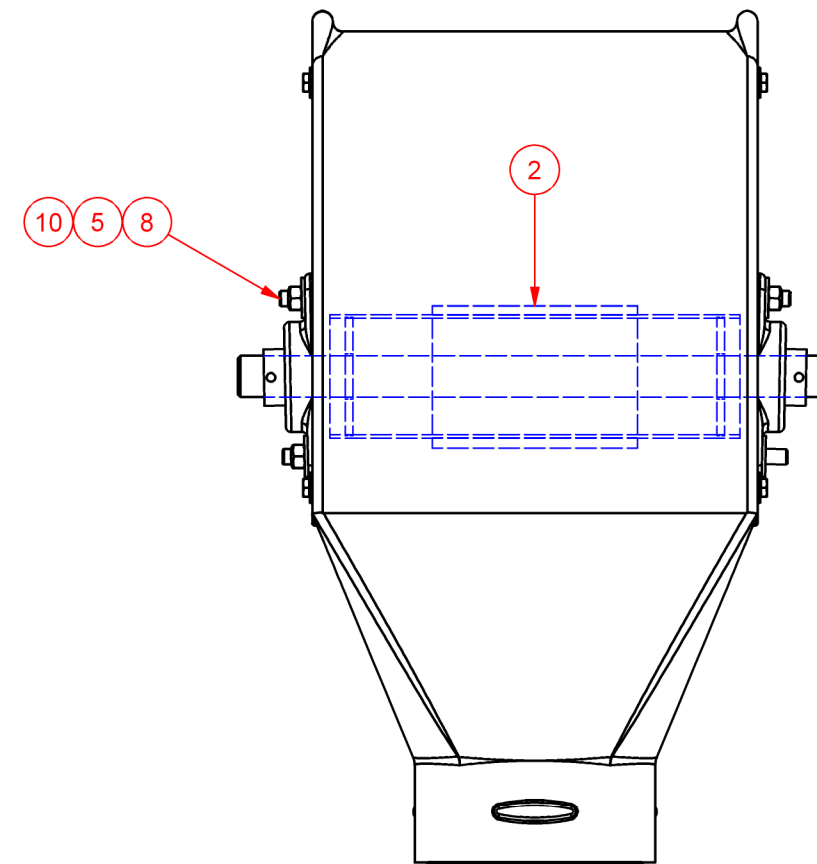
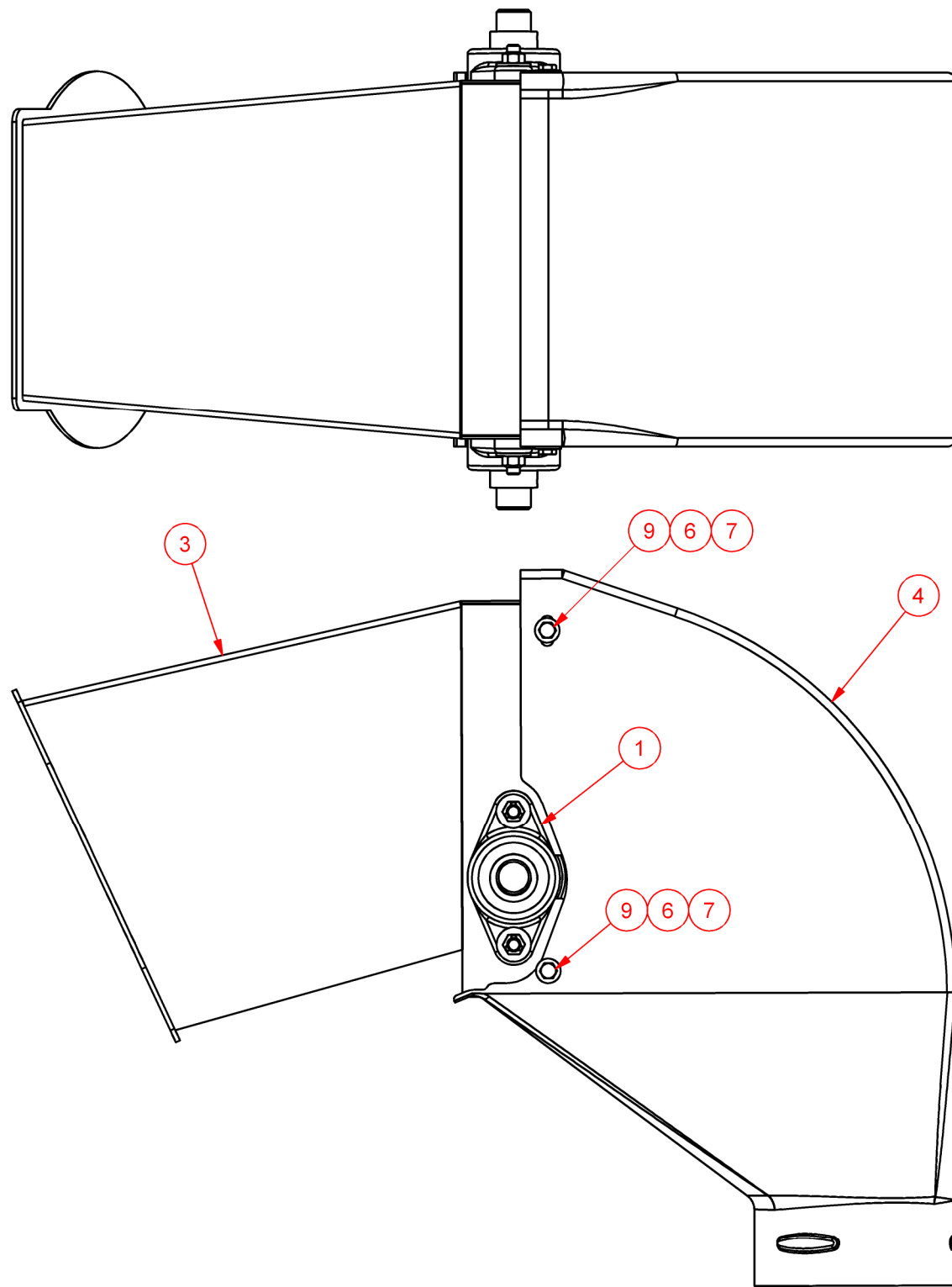
TOLERANCES UNLESS
 OTHERWISE SPECIFIED
 FRACTIONAL ±1/16
 XX ±0.1
 XXX ±0.04
 XXXX ±0.010
 ANGULAR ±1°

INCH FORMAT

 DO NOT SCALE DRAWING

CONVEY-ALL
INDUSTRIES INC.
 WINKLER, MB CANADA (204) 325-4195

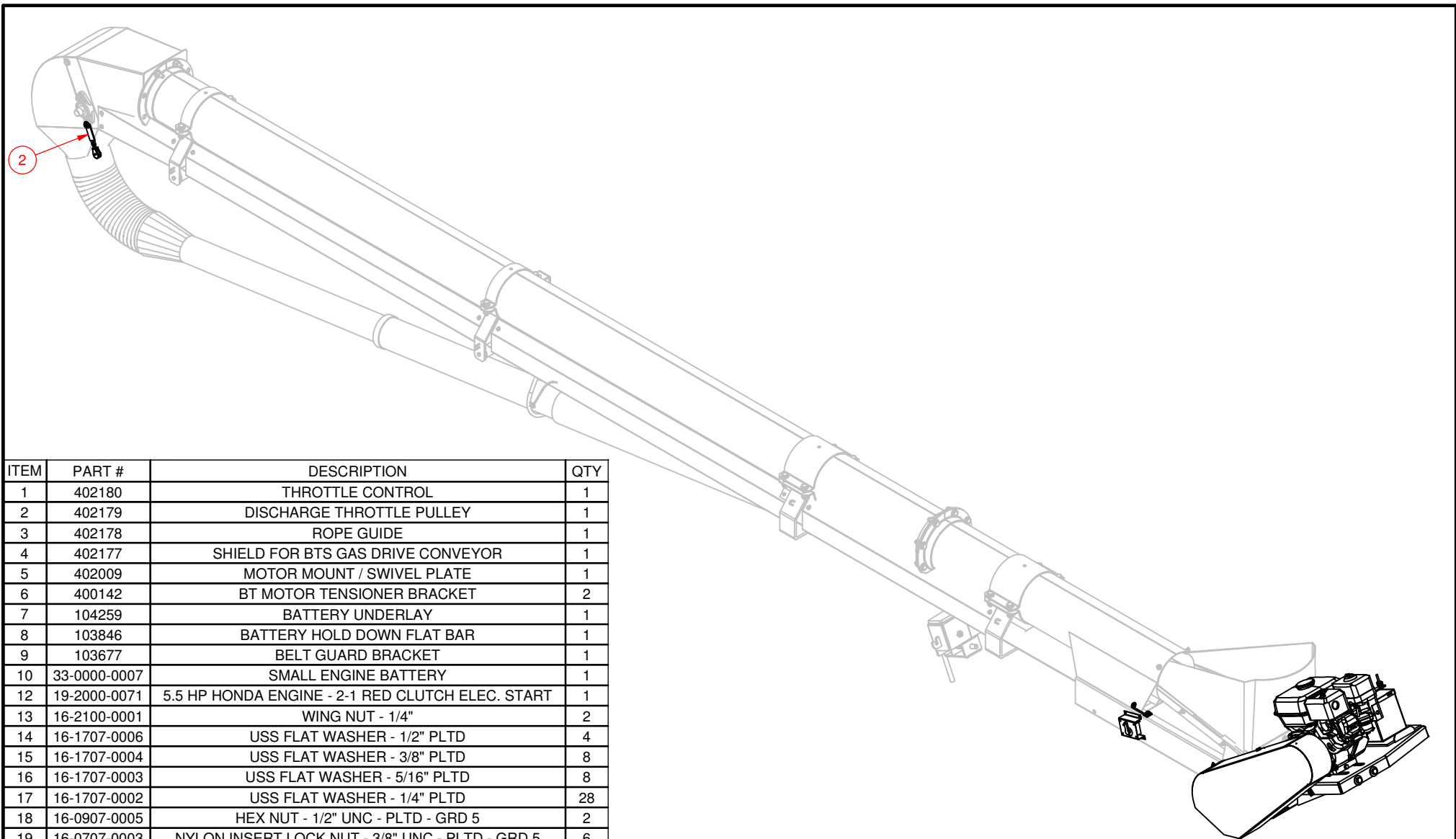
| | |
|---------------------------|-----------------------------------|
| PART NO. 502002 | TITLE LOCKING MECHANISM |
| CREATED: 10/29/2007 | MATERIAL |
| REVISED: 10/29/2007 | REF NO. |
| DRAWN: FK | SCALE: 1:4 |
| SQ. IN. | SHEET: 1 OF 1 |



| ITEM | PART # | DESCRIPTION | QTY |
|------|--------------|--|-----|
| 1 | B-0000-0005 | BEARING - FL205 - 1" SHAFT - COMPLETE | 2 |
| 2 | 500022 | ROLLER - TYPE 3 x 10 x 1 | 1 |
| 3 | 400102 | DISCHARGE BODY | 1 |
| 4 | 21-1400-0003 | BEAN TENDER DISCHARGE HOOD - 6" OPENING | 1 |
| 5 | 16-1707-0004 | USS FLAT WASHER - 3/8" PLTD | 4 |
| 6 | 16-1707-0002 | USS FLAT WASHER - 1/4" PLTD | 4 |
| 7 | 16-1200-0020 | THREADED INSERT RIVET - 1/4-20 UNC - .027 TO .165 GRIP | 4 |
| 8 | 16-0307-0124 | CARRIAGE BOLT - 3/8" x 1" UNC - PLTD - GRD 5 | 4 |
| 9 | 16-0207-0007 | HEX BOLT - 1/4" x 1" UNC - PLTD - GRD 5 | 4 |
| 10 | 15-1800-0004 | CONE LOCK NUT - 3/8" UNC - PLTD - GRD 5 | 4 |

| | | | | |
|---------------------------------------|----------------------------|--|----------------------|-----------------------------------|
| TOLERANCES UNLESS OTHERWISE SPECIFIED | | INCH FORMAT UNLESS OTHERWISE SPECIFIED | | |
| FRACTIONAL | ±1/16 | | DO NOT SCALE DRAWING | |
| X.X | ±0.1 | | | WINKLER, MB CANADA (204) 325-4195 |
| X.XX | ±0.04 | | | |
| X.XXX | ±0.010 | | | |
| ANGULAR | ±1° | | | |
| PART NO. | TITLE | | | TC-08 |
| 500023 | BEAN TENDER DISCHARGE HOOD | | | |
| CREATED: 27/10/2005 | REVISED: 19/04/2010 | MATERIAL | REF NO. | |
| DESIGNED: FK | | | | |
| DRAWN: EW | SCALE: NTS | WT: 20.8 lbmass | SHEET: 1 OF 1 | |

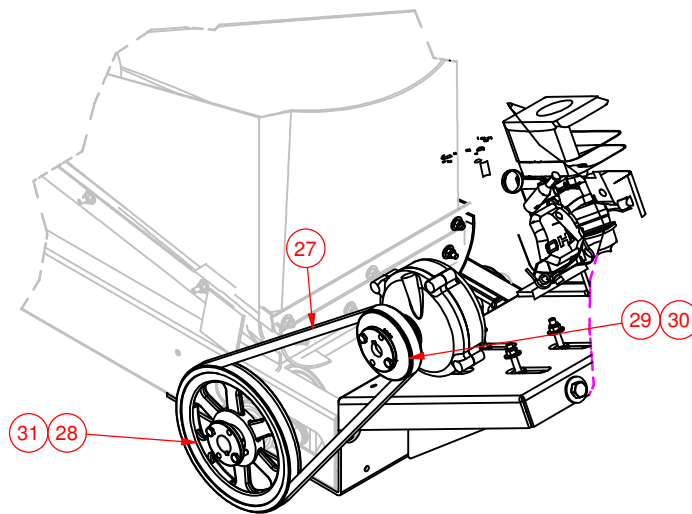
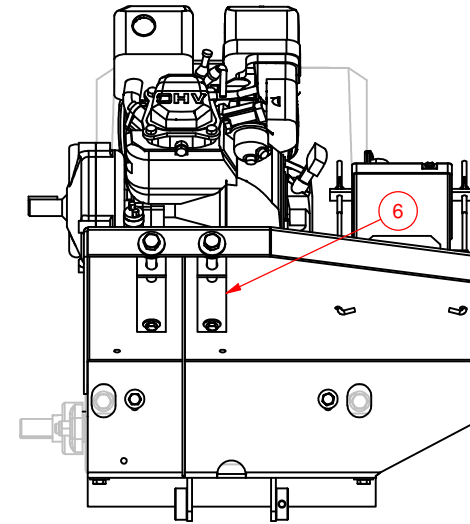
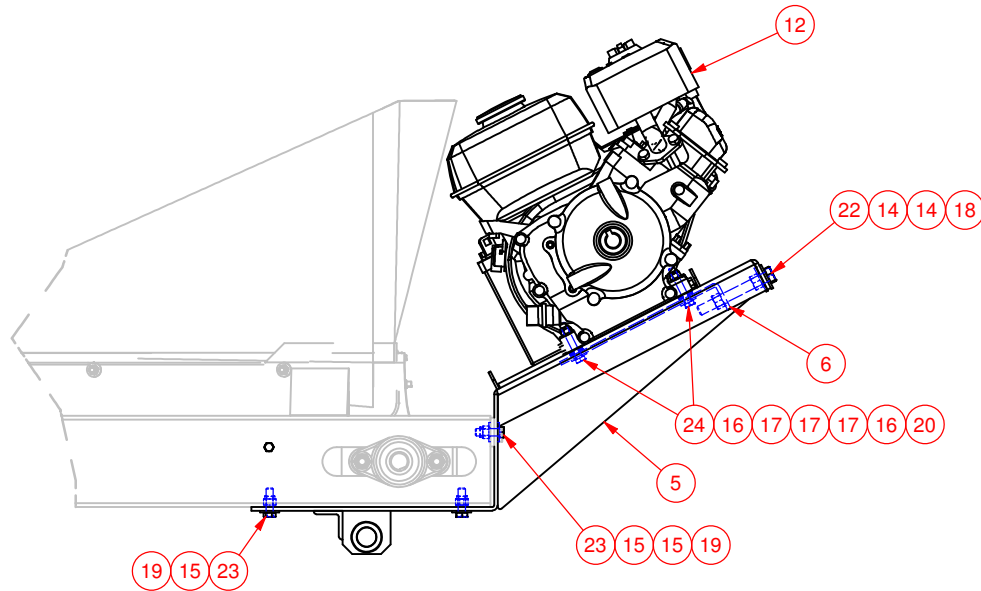
PROPRIETARY AND CONFIDENTIAL
 THE INFORMATION CONTAINED IN THIS DRAWING IS THE SOLE PROPERTY OF CONVEY-ALL INDUSTRIES. ANY REPRODUCTION IN PART OR AS A WHOLE WITHOUT THE WRITTEN PERMISSION OF CONVEY-ALL IS PROHIBITED.

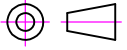


| ITEM | PART # | DESCRIPTION | QTY |
|------|--------------|---|-----|
| 1 | 402180 | THROTTLE CONTROL | 1 |
| 2 | 402179 | DISCHARGE THROTTLE PULLEY | 1 |
| 3 | 402178 | ROPE GUIDE | 1 |
| 4 | 402177 | SHIELD FOR BTS GAS DRIVE CONVEYOR | 1 |
| 5 | 402009 | MOTOR MOUNT / SWIVEL PLATE | 1 |
| 6 | 400142 | BT MOTOR TENSIONER BRACKET | 2 |
| 7 | 104259 | BATTERY UNDERLAY | 1 |
| 8 | 103846 | BATTERY HOLD DOWN FLAT BAR | 1 |
| 9 | 103677 | BELT GUARD BRACKET | 1 |
| 10 | 33-0000-0007 | SMALL ENGINE BATTERY | 1 |
| 12 | 19-2000-0071 | 5.5 HP HONDA ENGINE - 2-1 RED CLUTCH ELEC. START | 1 |
| 13 | 16-2100-0001 | WING NUT - 1/4" | 2 |
| 14 | 16-1707-0006 | USS FLAT WASHER - 1/2" PLTD | 4 |
| 15 | 16-1707-0004 | USS FLAT WASHER - 3/8" PLTD | 8 |
| 16 | 16-1707-0003 | USS FLAT WASHER - 5/16" PLTD | 8 |
| 17 | 16-1707-0002 | USS FLAT WASHER - 1/4" PLTD | 28 |
| 18 | 16-0907-0005 | HEX NUT - 1/2" UNC - PLTD - GRD 5 | 2 |
| 19 | 16-0707-0003 | NYLON INSERT LOCK NUT - 3/8" UNC - PLTD - GRD 5 | 6 |
| 20 | 16-0707-0002 | NYLON INSERT LOCK NUT - 5/16" UNC - PLTD - GRD 5 | 4 |
| 21 | 16-0707-0001 | NYLON INSERT LOCK NUT - 1/4" UNC - PLTD - GRD 5 | 7 |
| 22 | 16-0207-0261 | HEX BOLT - 1/2" x 4" UNC - PLTD - GRD 5 FULL THRD | 2 |
| 23 | 16-0207-0126 | HEX BOLT - 3/8" x 1 1/4" UNC - PLTD - GRD 5 | 6 |
| 24 | 16-0207-0071 | HEX BOLT - 5/16" x 2" UNC - PLTD - GRD 5 | 4 |
| 25 | 16-0207-0007 | HEX BOLT - 1/4" x 1" UNC - PLTD - GRD 5 | 7 |
| 26 | 14-1100-0024 | BATTERY HOLD DOWN ROD KIT | 1 |
| 27 | 11-1800-0106 | V-BELT - B52 | 1 |
| 28 | 11-1600-0003 | SINGLE GROOVE - 8.0" OD - BK80H | 1 |
| 29 | 11-1600-0002 | SINGLE GROOVE - 4.0" OD - BK40H | 1 |
| 30 | 11-1500-0027 | HUB - H 3/4" - CUSTUM KEYWAY 7MM | 1 |
| 31 | 11-1500-0003 | HUB - H 1" | 1 |
| 49 | 19-5000-0005 | ELECTRIC THROTTLE CONTROL W/PLUG AND BRACKET | 1 |

| | | |
|--|--|--|
| TOLERANCES UNLESS OTHERWISE SPECIFIED FRACTIONAL ±1/16 X.X ±0.1 X.XX ±0.04 X.XXX ±0.010 ANGULAR ±1° | INCH FORMAT UNLESS OTHERWISE SPECIFIED | CONVEY-ALL INDUSTRIES INC. WINKLER, MB CANADA (204) 325-4195 |
| | | |
| PART NO. | TITLE | BTS-290 |
| BTS-290-405-GAS DR-ESGAS DRIVE, ELEC. START, MANUAL THROTTLE | | |
| CREATED: | 27/06/2008 | |
| REVISED: | 7/1/2008 | |
| DESIGNED: | FK | |
| DRAWN: | FK | |
| MATERIAL | SCALE: NTS | WT: 833.5 lbmass |
| REF NO. | SHEET: 1 OF 3 | |

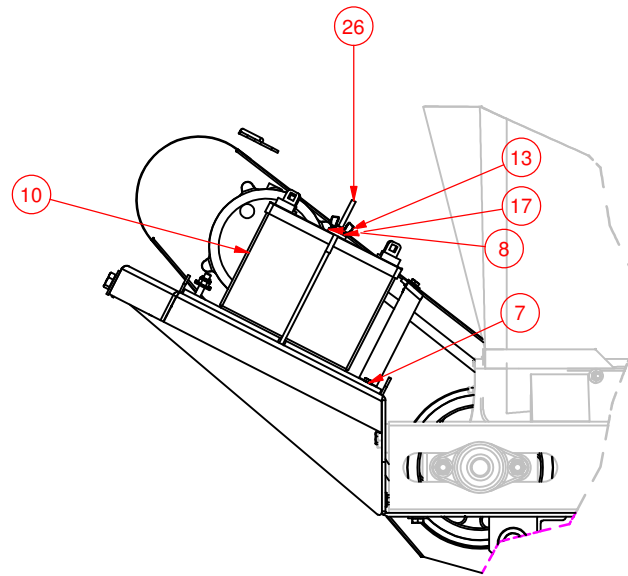
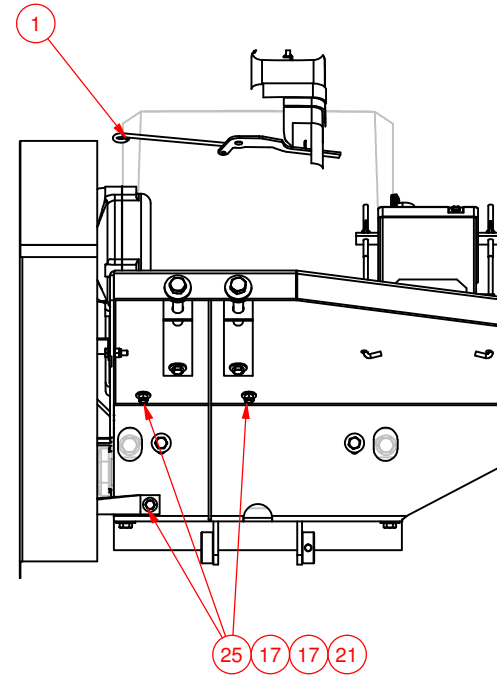
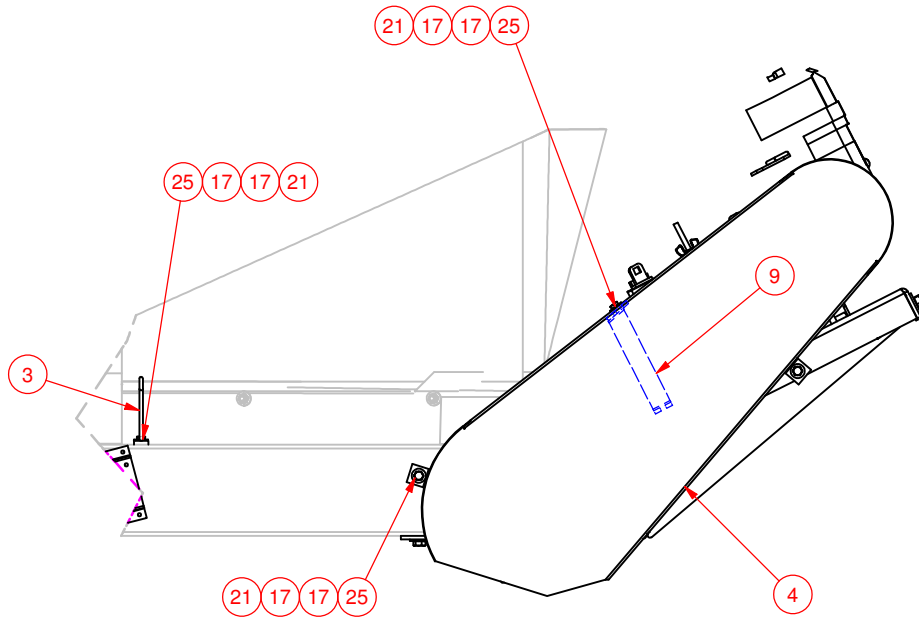
PROPRIETARY AND CONFIDENTIAL
 THE INFORMATION CONTAINED IN THIS DRAWING IS THE SOLE PROPERTY OF CONVEY-ALL INDUSTRIES. ANY REPRODUCTION IN PART OR AS A WHOLE WITHOUT THE WRITTEN PERMISSION OF CONVEY-ALL IS PROHIBITED.

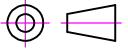


| | | | | |
|--|--|---|--|--|
| TOLERANCES UNLESS OTHERWISE SPECIFIED FRACTIONAL ±1/16 X.X ±0.1 X.XX ±0.04 X.XXX ±0.010 ANGULAR ±1° | | INCH FORMAT UNLESS OTHERWISE SPECIFIED  DO NOT SCALE DRAWING | | CONVEY-ALL INDUSTRIES INC. WINKLER, MB CANADA (204) 325-4195 |
| PART NO. | | TITLE | | |
| CREATED: 27/06/2008 | | MATERIAL | | REF NO. |
| REVISD: 7/1/2008 | | DRAWN: FK | | SCALE: NTS |
| DESIGNED: FK | | WT: 833.5 lbmass | | SHEET: 2 OF 3 |
| DRAWN: FK | | TITLE | | REF NO. |

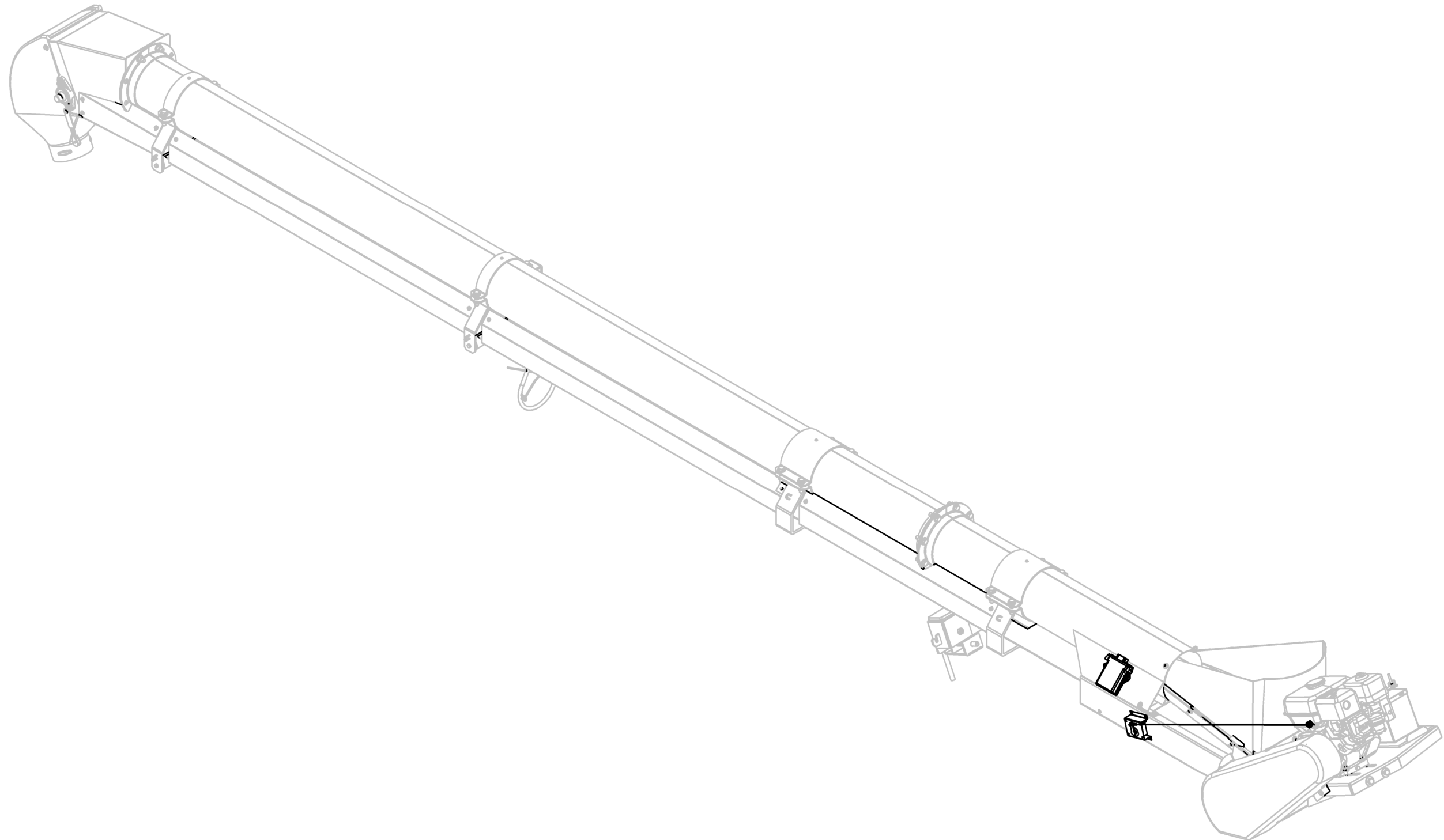
PROPRIETARY AND CONFIDENTIAL
 THE INFORMATION CONTAINED IN THIS DRAWING IS THE SOLE PROPERTY OF CONVEY-ALL INDUSTRIES. ANY REPRODUCTION IN PART OR AS A WHOLE WITHOUT THE WRITTEN PERMISSION OF CONVEY-ALL IS PROHIBITED.

PART NO. **BTS-290-405-GAS DR-ES** TITLE **BTS-290 GAS DRIVE, ELEC. START, MANUAL THROTTLE**

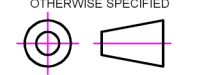


| | | | | |
|--|--|---|--|--|
| TOLERANCES UNLESS OTHERWISE SPECIFIED FRACTIONAL ±1/16 X.X ±0.1 X.XX ±0.04 X.XXX ±0.010 ANGULAR ±1° | | INCH FORMAT UNLESS OTHERWISE SPECIFIED  DO NOT SCALE DRAWING | | CONVEY-ALL INDUSTRIES INC. WINKLER, MB CANADA (204) 325-4195 |
| PART NO. | | TITLE | | |
| CREATED: 27/06/2008 | | MATERIAL | | REF NO. |
| REVISIONS: REVISION: 7/1/2008 DESIGNED: FK DRAWN: FK | | SCALE: NTS | | WT: 833.5 lbmass |
| SHEET: 3 OF 3 | | | | |

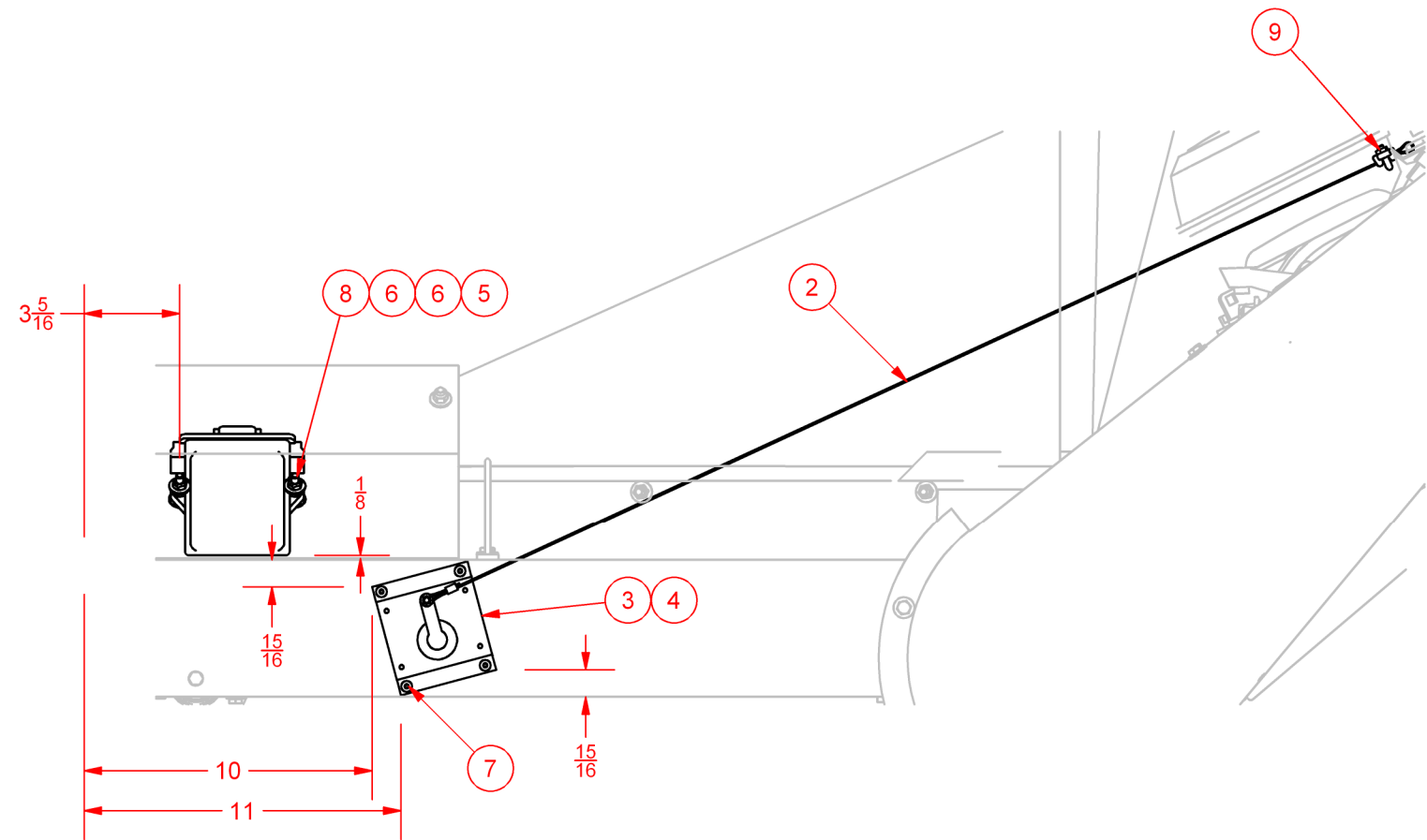
PROPRIETARY AND CONFIDENTIAL
 THE INFORMATION CONTAINED IN THIS DRAWING IS THE SOLE PROPERTY OF CONVEY-ALL INDUSTRIES. ANY REPRODUCTION IN PART OR AS A WHOLE WITHOUT THE WRITTEN PERMISSION OF CONVEY-ALL IS PROHIBITED.



| ITEM | PART # | DESCRIPTION | QTY |
|------|-----------------|---|-----|
| 1 | BTS/WT-WIRELESS | ROWE ELECTRONICS WIRELESS CONTROLLER (2 BUTTON) | 1 |
| 2 | 503068 | ELEC. THROTTLE CONTROL CABLE - SWAGED | 1 |
| 3 | 19-5000-0005 | ELECTRIC THROTTLE CONTROL W/PLUG AND BRACKET | 1 |
| 4 | 16-2700-0001 | SPRING CLIP - 3/16 | 1 |
| 5 | 16-2407-0001 | CONE LOCK NUT - 1/4" UNC - PLTD - GRD 5 | 2 |
| 6 | 16-1707-0002 | USS FLAT WASHER - 1/4" PLTD | 4 |
| 7 | 16-1200-0015 | POP RIVET - 3/16" x 3/8" - SMALL HEAD | 4 |
| 8 | 16-0207-0008 | HEX BOLT - 1/4" x 1 1/4" UNC - PLTD - GRD 5 | 2 |
| 9 | 12-1100-0009 | CABLE CLIP - 1/8" | 1 |

| | | | | | |
|--|--|---|--|--|--|
| TOLERANCES UNLESS OTHERWISE SPECIFIED FRACTIONAL ±1/16 X.X ±0.1 X.XX ±0.04 X.XXX ±0.010 ANGULAR ±1° | | INCH FORMAT UNLESS OTHERWISE SPECIFIED  DO NOT SCALE DRAWING | | CONVEY-ALL INDUSTRIES INC. WINKLER, MB CANADA (204) 325-4195 | |
| PART NO. 503067 | | TITLE BTS-COMMON WIRELESS THROTTLE CONTROL | | | |
| CREATED: 27/06/2008 | | REVISED: 01/07/2008 | | REF NO. | |
| DESIGNED: FK | | MATERIAL | | DRAWN: FK | |
| SCALE: NTS | | WT: 8.5 lbmass | | SHEET: 1 OF 2 | |

PROPRIETARY AND CONFIDENTIAL
 THE INFORMATION CONTAINED IN THIS DRAWING IS THE
 SOLE PROPERTY OF CONVEY-ALL INDUSTRIES. ANY
 REPRODUCTION IN PART OR AS A WHOLE WITHOUT THE
 WRITTEN PERMISSION OF CONVEY-ALL IS PROHIBITED.



VIEW G-G
SCALE 1 / 8

| | | | | |
|---|--------|--|----------------------|---------------------------------------|
| TOLERANCES UNLESS OTHERWISE SPECIFIED | | INCH FORMAT UNLESS OTHERWISE SPECIFIED | | WINKLER, MB CANADA (204) 325-4195 |
| FRACTIONAL | ±1/16 | | DO NOT SCALE DRAWING | |
| X.X | ±0.1 | | | PART NO. 503067 |
| X.XX | ±0.04 | | | TITLE WIRELESS THROTTLE CONTROL |
| X.XXX | ±0.010 | | | TITLE BTS-COMMON |
| ANGULAR | ±1° | | | CREATED: 27/06/2008 |
| PROPRIETARY AND CONFIDENTIAL | | REVISED: 01/07/2008 | | REF NO. |
| THE INFORMATION CONTAINED IN THIS DRAWING IS THE SOLE PROPERTY OF CONVEY-ALL INDUSTRIES. ANY REPRODUCTION IN PART OR AS A WHOLE WITHOUT THE WRITTEN PERMISSION OF CONVEY-ALL IS PROHIBITED. | | DESIGNED: FK | | |
| | | DRAWN: FK | | |
| | | SCALE: NTS | WT: 8.5 lbmass | SHEET: 2 OF 2 |