

CST39C

Australian Version

650508182

Page 1 to 8: Base Unit

Page 9 & 10: Slave Conveyor

Page 11: Light Kit

Page 12 &13: Limit Switch Kit

Page 14 to 21: Rear Conveyor

Page 22 to 25: Wet Kit (Gas)

Page 26: Fuel Tank

Page 27: Hydraulic Tank

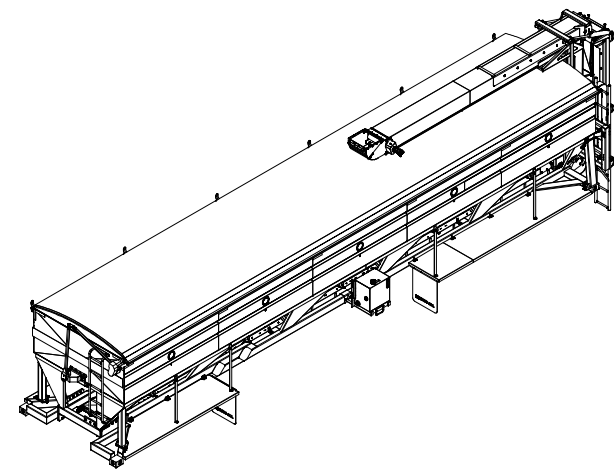
Page 28: Hydraulic Bank (for reference only)

ITEM	QTY	MASS	PART #	DESCRIPTION
1	1	833.56 lbmass	SLV-2039	CST-2039 SLAVE CONVEYOR
2	10	.00 lbmass	Hose Clamp	xxx Dia Hose Clamp
3	1	.04 lbmass	3630000015	WARNING-FALLING HAZARD DECAL
4	1	.04 lbmass	3617000013	DANGER-CST ELECTROCUTION HAZARD DECAL
5	1	2.77 lbmass	3615080028	CST-39C LOGO - RIGHT (PASS-SIDE), REAR DECAL
6	1	1.57 lbmass	3615070029	CST-39C MODEL NO. - RIGHT (PASS-SIDE), FRONT DECAL
7	1	2.77 lbmass	3615060030	CST-39C LOGO - LEFT (DRIVER-SIDE), REAR DECAL
8	1	1.57 lbmass	3615050031	CST-39C MODEL NO. - LEFT (DRIVER-SIDE), FRONT DECAL
9	1	1.90 lbmass	3615030020	CST39C CONVEY-ALL LOGO STRIPE, CST FRONT DECAL
10	2	.00 lbmass	3611000005	2" BLACK #5
11	2	.00 lbmass	3611000004	2" BLACK #4
12	2	.00 lbmass	3611000003	2" BLACK #3
13	2	.00 lbmass	3611000002	2" BLACK #2
14	2	.00 lbmass	3611000001	2" BLACK #1
15	1	.02 lbmass	3610000010	MADE IN CANADA DECAL
16	5	.00 lbmass	2623000234	CAM LOCK DUST CAP - 3" NPT
17	5	.00 lbmass	2623000233	CAM LOCK MALE ADAPTER - 3" NPT
18	4	8.96 lbmass	2560000022	MUD FLAPS
19	20	.18 lbmass	2560000001	6-5/8" ROUND SIGHT GLASS WINDOW
20	5	2.06 lbmass	1825000067	CYLINDER - HYDRAULIC - 2" BORE X 12" STROKE
21	56	.00 lbmass	1624080009	SPRING LOCK WASHER - 1/4" - ZINC PLTD
22	18	.00 lbmass	1624080008	SPRING LOCK WASHER - 1/2" - ZINC PLTD
23	32	.00 lbmass	1624080007	SPRING LOCK WASHER - 3/8" - ZINC PLTD
24	2	.00 lbmass	1624080006	SPRING LOCK WASHER - 5/16" - ZINC PLTD
25	72	.00 lbmass	1624070003	CONE LOCK NUT - 1/2"-13 UNC - ZINC PLTD
26	10	.00 lbmass	1624070001	CONE LOCK NUT - 1/4"-20 UNC - ZINC PLTD
27	366	.00 lbmass	1617070004	U.S.S. FLAT WASHER - 3/8" - ZINC PLTD
28	2	.00 lbmass	1617070003	U.S.S. FLAT WASHER - 5/16" - ZINC PLTD
29	76	.00 lbmass	1617070002	U.S.S. FLAT WASHER - 1/4" - ZINC PLTD
30	162	.00 lbmass	1613070006	S.A.E. FLAT WASHER - 1/2" - ZINC PLTD
31	4	.00 lbmass	1613070004	S.A.E. FLAT WASHER - 3/8" - ZINC PLTD
32	6	.00 lbmass	1612000021	BLIND RIVET NUT - 3/8-16 UNC X 0.027 - 0.150 - STEEL
33	42	.00 lbmass	1612000020	BLIND RIVET NUT - 1/4-20 UNC X 0.027 - 0.165 - STEEL
34	12	.07 lbmass	1611000006	PIN - HAIR - #8 - 3/16
35	4	.00 lbmass	1602070529	HEX BOLT - 3/8"-16 X 5 1/2" UNC - ZINC PLTD - GRADE 5
36	20	.00 lbmass	1602070257	HEX BOLT - 1/2"-13 X 2 1/4" UNC - ZINC PLTD - GRADE 5
37	62	.00 lbmass	1602070249	HEX BOLT - 1/2"-13 X 1 3/4" UNC - ZINC PLTD - GRADE 5
38	8	.00 lbmass	1602070248	HEX BOLT - 1/2"-13 X 1 1/2" UNC - ZINC PLTD - GRADE 5
39	4	.00 lbmass	1602070133	HEX BOLT - 3/8"-16 X 2 3/4" UNC - ZINC PLTD - GRADE 5
40	20	.00 lbmass	1602070128	HEX BOLT - 3/8"-16 X 1 1/2" UNC - ZINC PLTD - GRADE 5
41	136	.00 lbmass	1602070126	HEX BOLT - 3/8"-16 X 1 1/4" UNC - ZINC PLTD - GRADE 5
42	30	.00 lbmass	1602070124	HEX BOLT - 3/8"-16 X 1" UNC - ZINC PLTD - GRADE 5
43	8	.00 lbmass	1602070122	HEX BOLT - 3/8"-16 X 3/4" UNC - ZINC PLTD - GRADE 5
44	66	.00 lbmass	1602070006	HEX BOLT - 1/4"-20 X 1" UNC - ZINC PLTD - GRADE 5
45	164	.00 lbmass	1518000004	CONE LOCK NUT - 3/8"-16 UNC - ZINC PLTD
46	3'	.05 lbmass	1419000073	RED REFLECTIVE TAPE
47	1	8023.37 lbmass	650508181	ROLL TARP KIT RIGHT HAND - ELECTRIC - CST39C WITH WIRELESS REMOTE
48	1	.00 lbmass	650507972	WORK LIGHT KIT
49	1	.00 lbmass	650507967	LIMIT SWITCH KIT
50	1	16.68 lbmass	650406378	CST39C ROLL TARP SPRING MOUNT
51	1	29.63 lbmass	650406374	CONVEYOR TRANSPORT REAR SUPPORT
52	2	26.02 lbmass	650406373	CONVEYOR TRANSPORT SUPPORT
53	1	6.36 lbmass	650121997	TOP BRACE SUPPORT BRACKET - LEFT
54	1	6.36 lbmass	650121994	TOP BRACE SUPPORT BRACKET - RIGHT
55	8	25.59 lbmass	650121988	REAR TRANSPORT SUPPORT FRAME
56	1	2555.91 lbmass	503537	FOLD CONVEYOR ASSEMBLY
57	1	52.78 lbmass	405110	REAR LADDER
58	5	.25 lbmass	403239	LIMIT SWITCH STOP
59	5	.31 lbmass	403238	LIMIT SWITCH MOUNT
60	1	124.70 lbmass	402226	FRONT FENDER - RIGHT
61	1	124.70 lbmass	402225	FRONT FENDER - LEFT
62	1	183.39 lbmass	402224	REAR FENDER - RIGHT
63	1	183.40 lbmass	402223	REAR FENDER - LEFT
64	1	153.32 lbmass	402222	FRONT CORNER LOCK - RIGHT
65	1	152.45 lbmass	402221	FRONT CORNER LOCK - LEFT
66	1	75.92 lbmass	402220	REAR CORNER LOCK - RIGHT
67	1	75.92 lbmass	402219	REAR CORNER LOCK - LEFT
68	2	68.42 lbmass	402218	LIFT FRAME

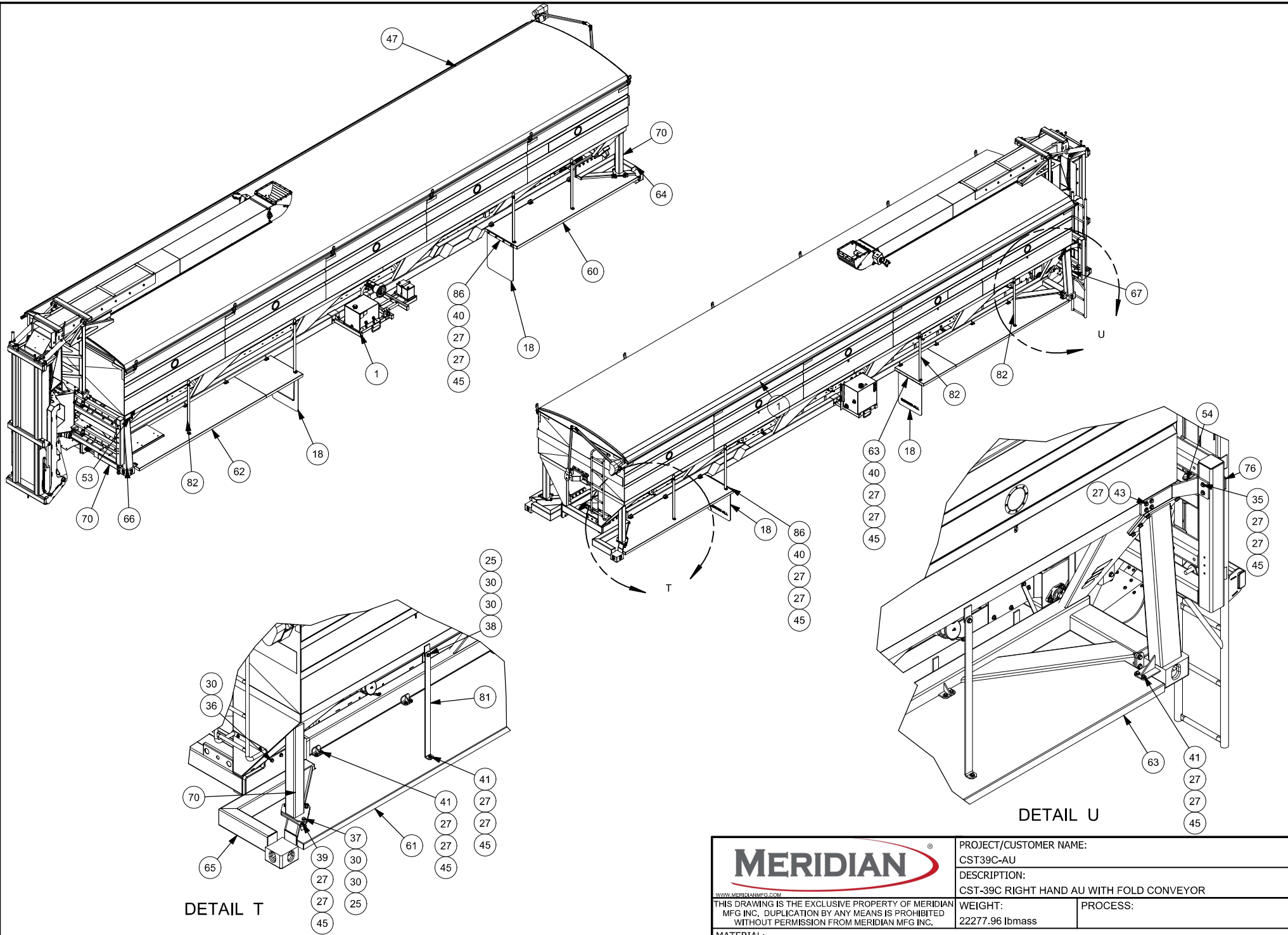


ITEM	QTY	MASS	PART #	DESCRIPTION
69	4	163.51 lbmass	402210	CENTER DIVIDER WALL
70	1	7556.39 lbmass	402209	COMPLETE TANK & FRAME
71	5	25.52 lbmass	402115	KNIFE GATE MOUNT
72	2	6.62 lbmass	401327	ANTI SAIL BRACKET
73	1	14.44 lbmass	400298	BOLT ON FRONT LADDER
74	5	22.58 lbmass	400292	KNIFE GATE
75	4	.00 lbmass	150972	HORIZONTAL RAILING SPACER
76	2	.83 lbmass	117535	TUBE SUPPORT PLATE
77	5	3.40 lbmass	108713	GATE FILL DEFLECTOR PLATE - LEFT
78	5	3.40 lbmass	108634	GATE FILL DEFLECTOR PLATE - RIGHT
79	2	.48 lbmass	105181	SLAVE HEAD SECTION MOUNT TAB
80	1	9.17 lbmass	103911	SLAVE BED - TAIL WEATHER COVER
81	4	5.36 lbmass	103901	FRONT FENDER SUPPORT BRACKET
82	4	5.76 lbmass	103524	REAR FENDER SUPPORT BRACKET
83	6	.34 lbmass	103309	SLAVE MOUNT BRACKET
84	2	4.14 lbmass	102609	WIND DEFLECTOR - TYPE 51
85	6	9.70 lbmass	102608	WIND DEFLECTOR - TYPE 120
86	2	3.28 lbmass	101782	MUDFLAP BRACKET
87	1	.00 lbmass	19984	SERIAL NUMBER DECAL
88	1	.00 lbmass	29-1000-0002	CANVAS CHUTE
89	160	.00 lbmass	16-1200-0015	POP RIVET - 3/16" x 3/8" - SMALL HEAD
90	2	.02 lbmass	16-1110-0007	LINCH PIN - 1/4" - ZINC PLTD
91	12	.98 lbmass	16-1100-0034	CLEVIS PIN - 1" x 4"
92	4	.01 lbmass	16-0207-0124	HEX BOLT - 3/8" x 1" UNC - PLTD - GRD 5
93	12'	.05 lbmass	14-1900-0074	AMBER REFLECTIVE TAPE
94	2	.00 lbmass	-	HEX BOLT SELF TAPPING - 5/16-18 UNC x 3/4" - ZINC PLTD - GRADE 5
95	1	.02 lbmass	3610000080	PATENT PROTECTED DECAL

OPTIONS				
ITEM	QTY	MASS	PART #	DESCRIPTION
1	1	564.76 lbmass	650508168	CST39C WET KIT - RIGHT HAND AU
95	1	.02 lbmass	3610000080	PATENT PROTECTED DECAL
	1		650505039	WIRELESS REMOTE CONTROL INSTALL




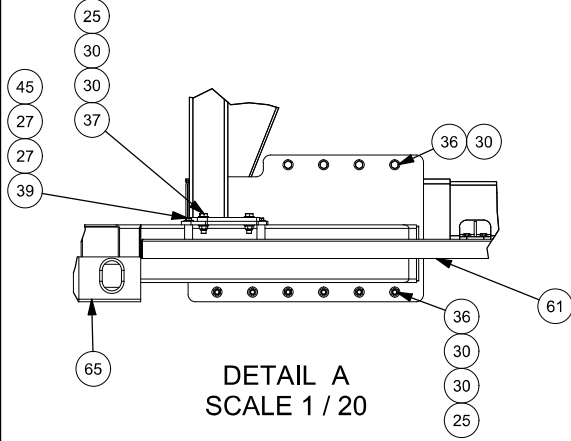
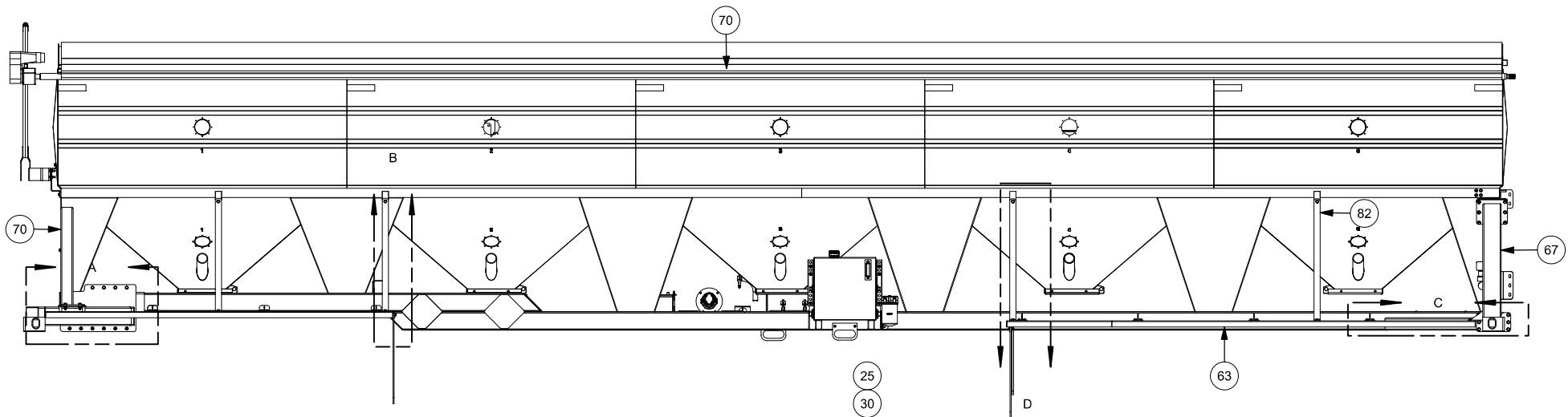
C	Added View Glasses to Opposite Side (ECO 3478)	2023-07-31	DB		
REV	DESCRIPTION	DATE	DESIGNER		
REVISION HISTORY					
		PROJECT/CUSTOMER NAME:			
		CST39C-AU			
<small>WWW.MERIDIANMFG.COM</small> THIS DRAWING IS THE EXCLUSIVE PROPERTY OF MERIDIAN MFG INC. DUPLICATION BY ANY MEANS IS PROHIBITED WITHOUT PERMISSION FROM MERIDIAN MFG INC.		DESCRIPTION:			
		CST-39C RIGHT HAND AU WITH FOLD CONVEYOR			
MATERIAL:		WEIGHT:	PROCESS:		
		22277.96 lbmass			
DRAWN BY:	DRAWN BY DATE:	CHECKED BY:	PART/DRAWING NUMBER:	REV:	SHEET No:
AS	2021-02-09	IP	650508182	C	1 OF 8



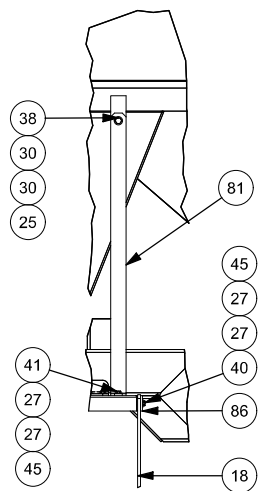
DETAIL T

DETAIL U

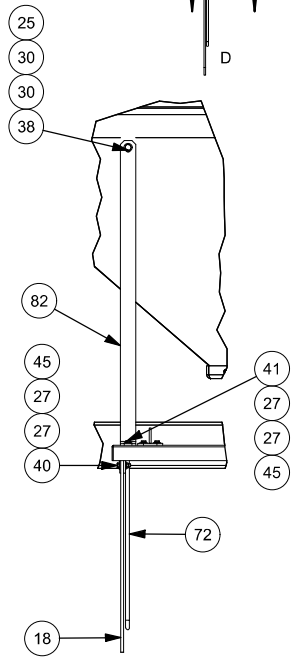
		PROJECT/CUSTOMER NAME:			
		CST39C-AU			
<small>WWW.MERIDIANMFG.COM</small> THIS DRAWING IS THE EXCLUSIVE PROPERTY OF MERIDIAN MFG INC. DUPLICATION BY ANY MEANS IS PROHIBITED WITHOUT PERMISSION FROM MERIDIAN MFG INC.		DESCRIPTION:			
		CST-39C RIGHT HAND AU WITH FOLD CONVEYOR			
MATERIAL:		WEIGHT:	PROCESS:		
		22277.96 lbmass			
DRAWN BY:	DRAWN BY DATE:	CHECKED BY:	PART/DRAWING NUMBER:	REV:	SHEET No:
AS	2021-02-09	IP	650508182	C	2 OF 8



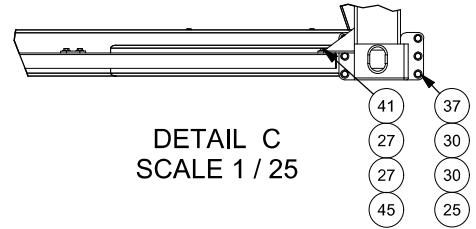
DETAIL A
SCALE 1 / 20




DETAIL B
SCALE 1 / 25

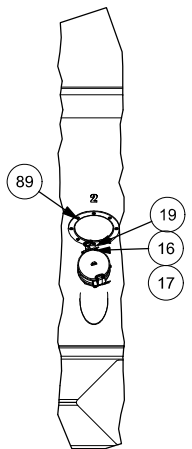
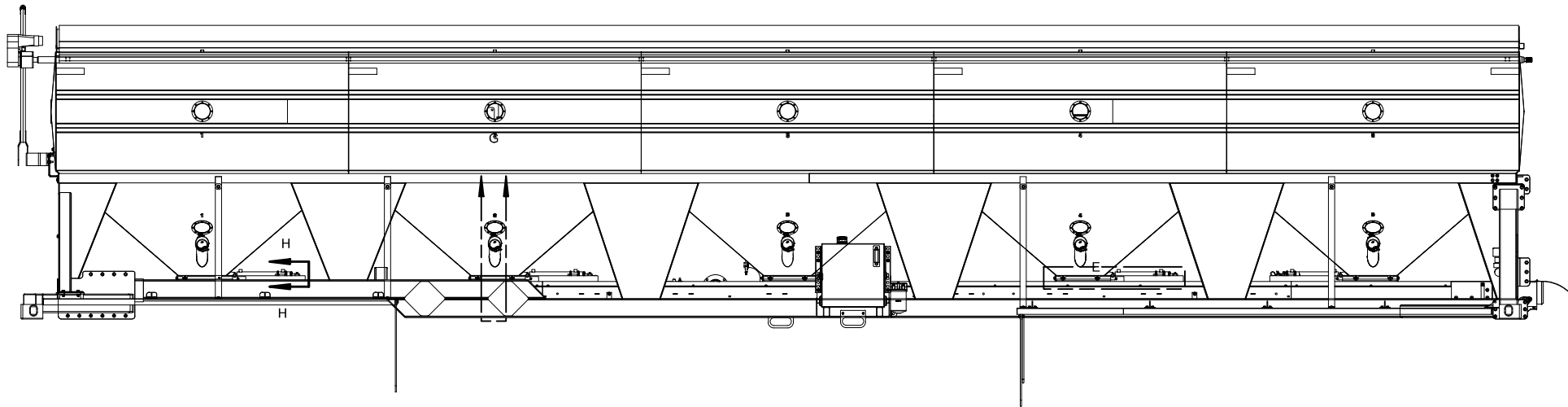


DETAIL D
SCALE 1 / 25

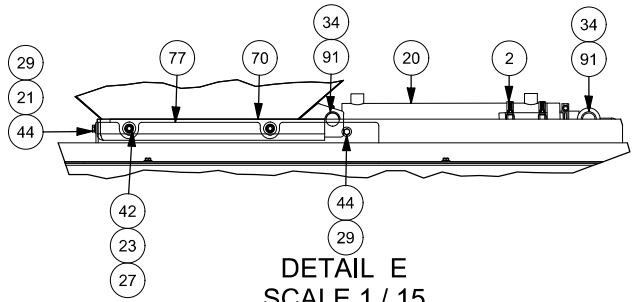


DETAIL C
SCALE 1 / 25

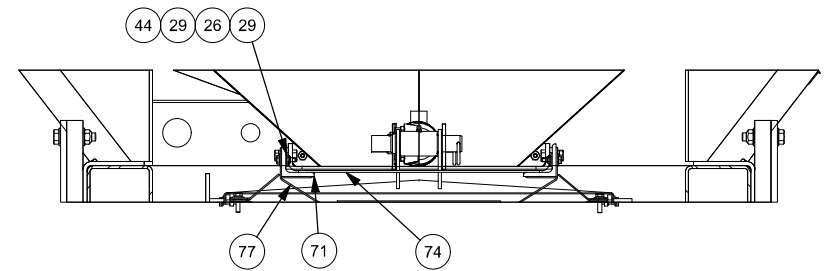
		PROJECT/CUSTOMER NAME:			
		CST39C-AU			
<small>WWW.MERIDIANMFG.COM</small> THIS DRAWING IS THE EXCLUSIVE PROPERTY OF MERIDIAN MFG INC. . DUPLICATION BY ANY MEANS IS PROHIBITED WITHOUT PERMISSION FROM MERIDIAN MFG INC.		DESCRIPTION:			
		CST-39C RIGHT HAND AU WITH FOLD CONVEYOR			
MATERIAL:		WEIGHT:	PROCESS:		
		22277.96 lbmass			
DRAWN BY:	DRAWN BY DATE:	CHECKED BY:	PART/DRAWING NUMBER:	REV:	SHEET No:
AS	2021-02-09	IP	650508182	C	3 OF 8




DETAIL G
SCALE 1 / 25

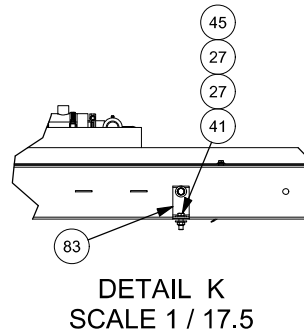
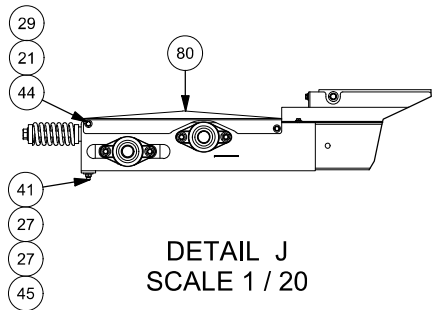
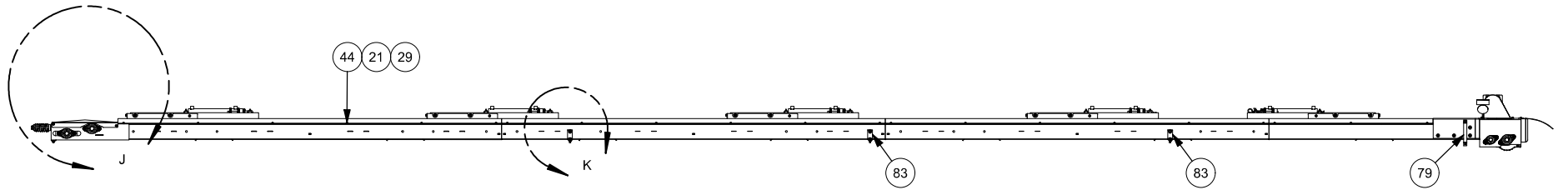
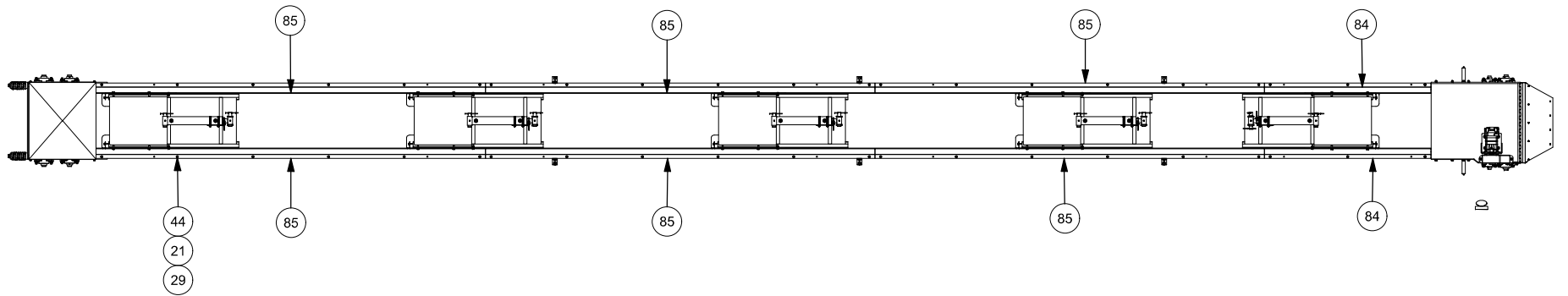



DETAIL E
SCALE 1 / 15

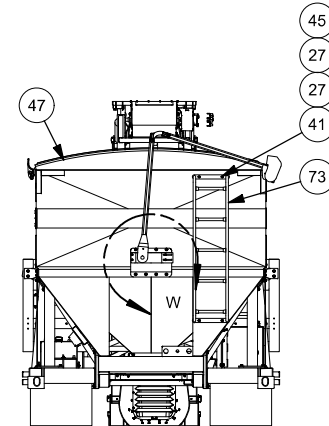
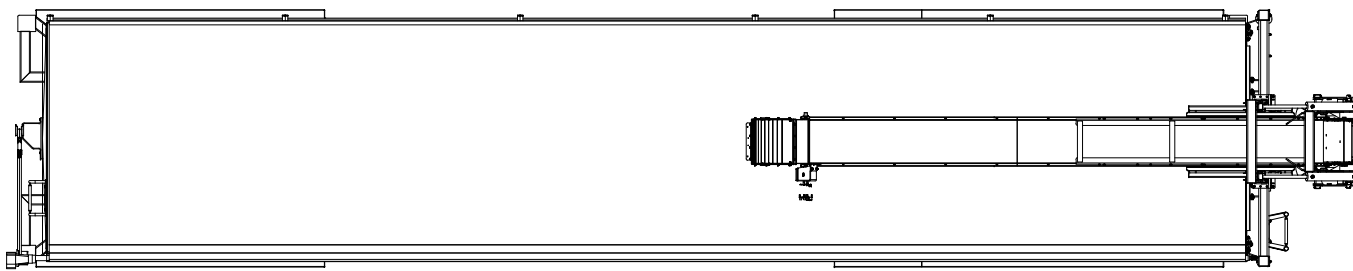


SECTION H-H
SCALE 0.0850

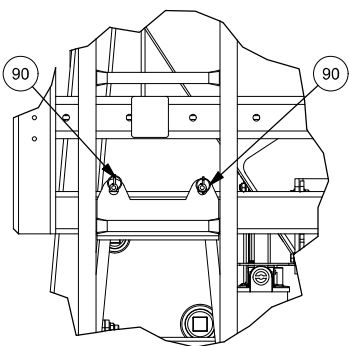
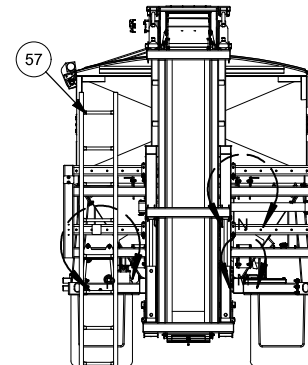
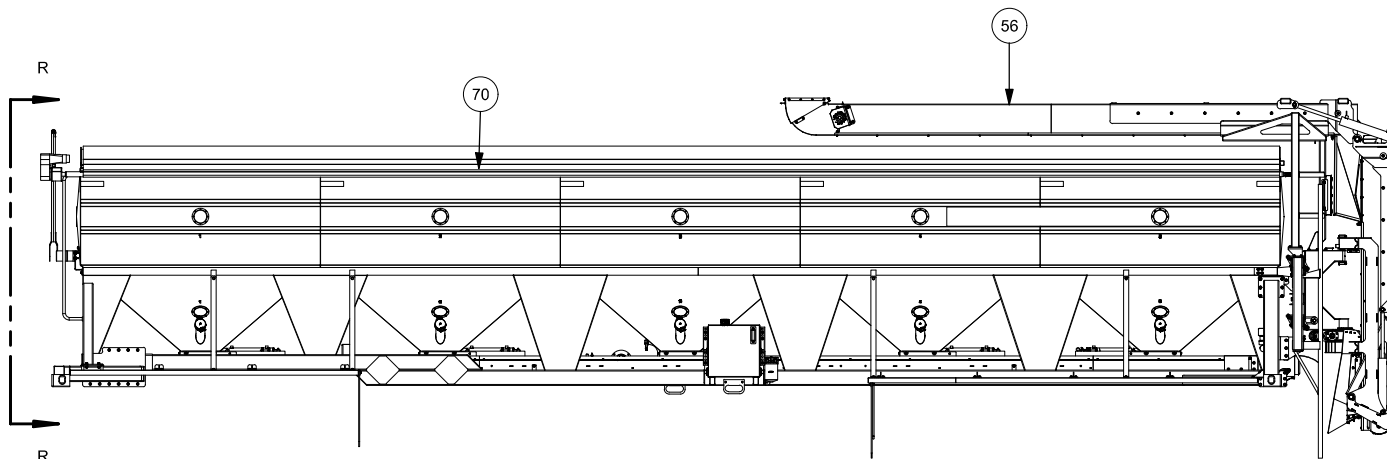
		PROJECT/CUSTOMER NAME:			
		CST39C-AU			
<small>WWW.MERIDIANMFG.COM</small> THIS DRAWING IS THE EXCLUSIVE PROPERTY OF MERIDIAN MFG INC. DUPLICATION BY ANY MEANS IS PROHIBITED WITHOUT PERMISSION FROM MERIDIAN MFG INC.		DESCRIPTION:			
		CST-39C RIGHT HAND AU WITH FOLD CONVEYOR			
MATERIAL:		WEIGHT:	PROCESS:		
		22277.96 lbmass			
DRAWN BY:	DRAWN BY DATE:	CHECKED BY:	PART/DRAWING NUMBER:	REV:	SHEET No:
AS	2021-02-09	IP	650508182	C	4 OF 8



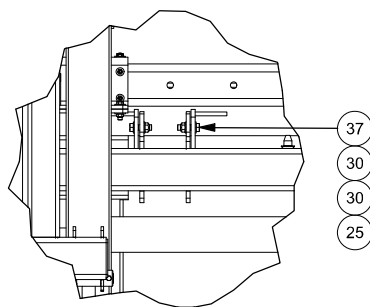
		PROJECT/CUSTOMER NAME:			
		CST39C-AU			
<small>WWW.MERIDIANMFG.COM</small> THIS DRAWING IS THE EXCLUSIVE PROPERTY OF MERIDIAN MFG INC. DUPLICATION BY ANY MEANS IS PROHIBITED WITHOUT PERMISSION FROM MERIDIAN MFG INC.		DESCRIPTION:			
		CST-39C RIGHT HAND AU WITH FOLD CONVEYOR			
MATERIAL:		WEIGHT:	PROCESS:		
		22277.96 lbmass			
DRAWN BY:	DRAWN BY DATE:	CHECKED BY:	PART/DRAWING NUMBER:	REV:	SHEET No:
AS	2021-02-09	IP	650508182	C	5 OF 8



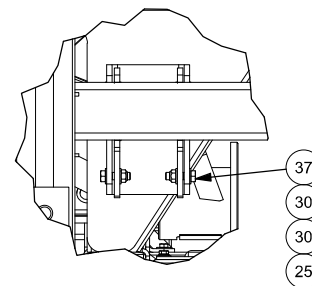
VIEW R



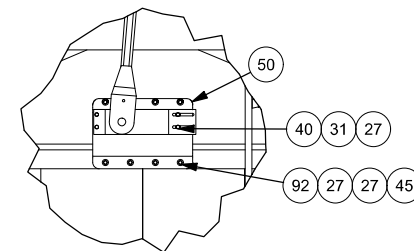
DETAIL P
SCALE 0.0550 : 1




DETAIL N



DETAIL M

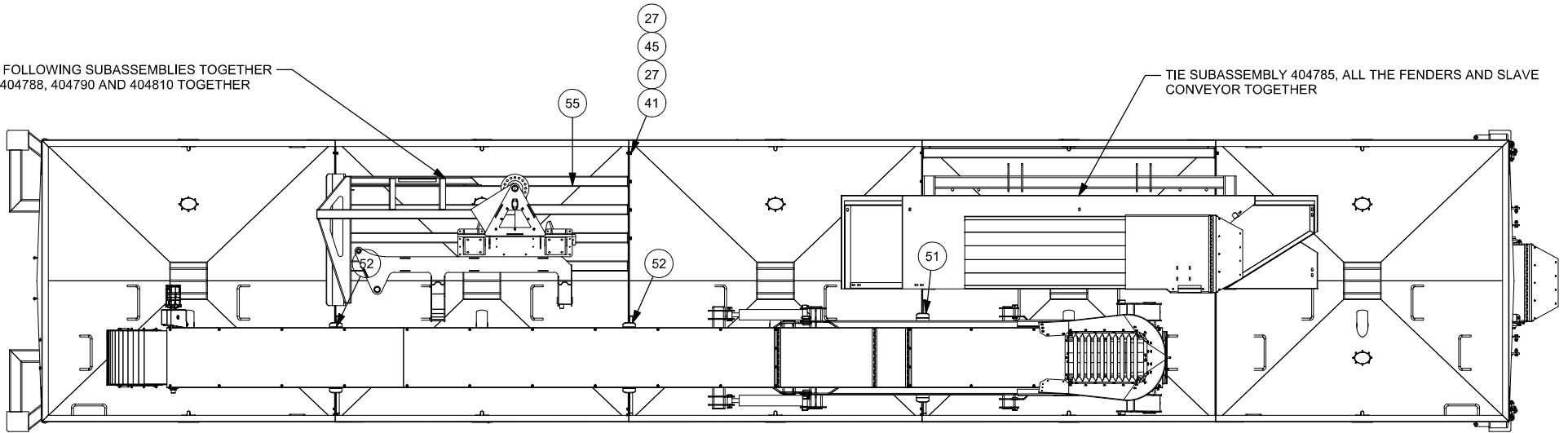


DETAIL W


		PROJECT/CUSTOMER NAME:			
		CST39C-AU			
<small>WWW.MERIDIANMFG.COM</small> THIS DRAWING IS THE EXCLUSIVE PROPERTY OF MERIDIAN MFG INC. DUPLICATION BY ANY MEANS IS PROHIBITED WITHOUT PERMISSION FROM MERIDIAN MFG INC.		DESCRIPTION:			
		CST-39C RIGHT HAND AU WITH FOLD CONVEYOR			
MATERIAL:		WEIGHT:	PROCESS:		
		22277.96 lbmass			
DRAWN BY:	DRAWN BY DATE:	CHECKED BY:	PART/DRAWING NUMBER:	REV:	SHEET No:
AS	2021-02-09	IP	650508182	C	6 OF 8

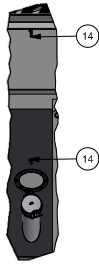
TIE THE FOLLOWING SUBASSEMBLIES TOGETHER
503537, 404788, 404790 AND 404810 TOGETHER

TIE SUBASSEMBLY 404785, ALL THE FENDERS AND SLAVE
CONVEYOR TOGETHER

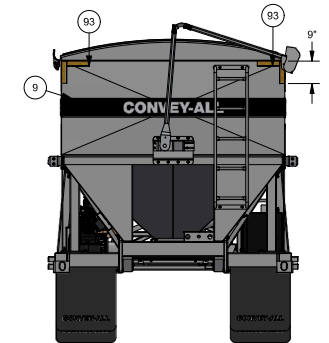
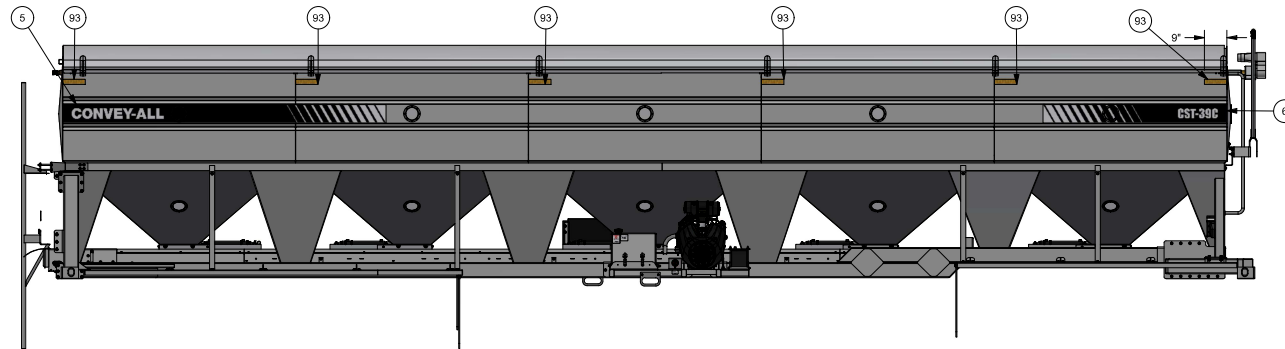
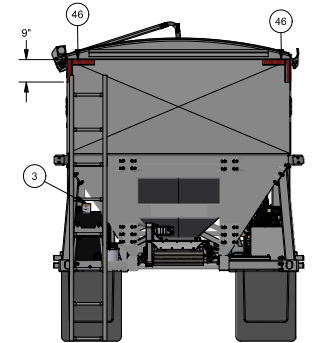
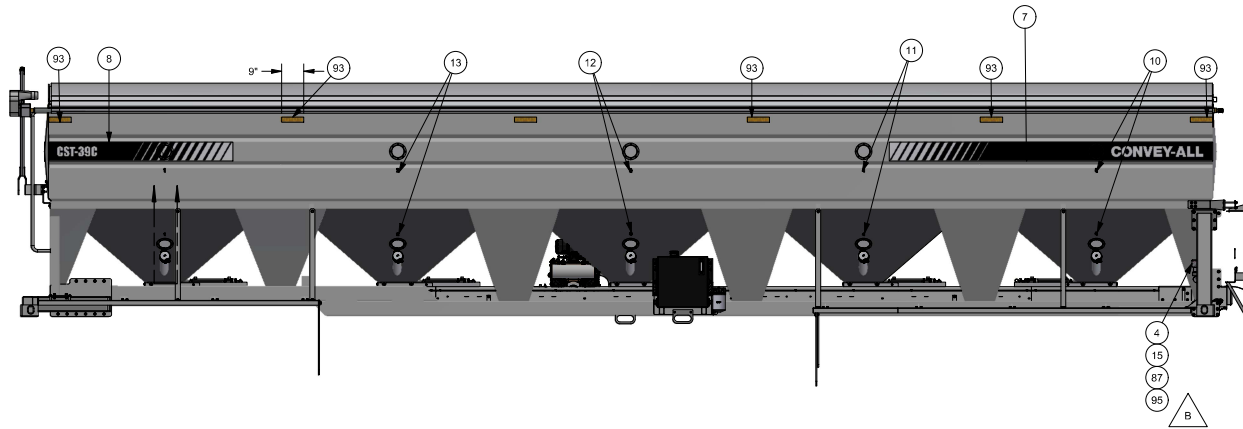


TRANSPORT POSITION

		PROJECT/CUSTOMER NAME:			
		CST39C-AU			
<small>WWW.MERIDIANMFG.COM</small> THIS DRAWING IS THE EXCLUSIVE PROPERTY OF MERIDIAN MFG INC. DUPLICATION BY ANY MEANS IS PROHIBITED WITHOUT PERMISSION FROM MERIDIAN MFG INC.		DESCRIPTION:			
		CST-39C RIGHT HAND AU WITH FOLD CONVEYOR			
MATERIAL:		WEIGHT:	PROCESS:		
		22277.96 lbmass			
DRAWN BY:	DRAWN BY DATE:	CHECKED BY:	PART/DRAWING NUMBER:	REV:	SHEET No:
AS	2021-02-09	IP	650508182	C	7 OF 8

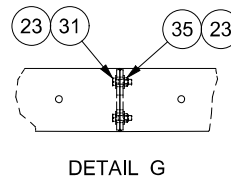
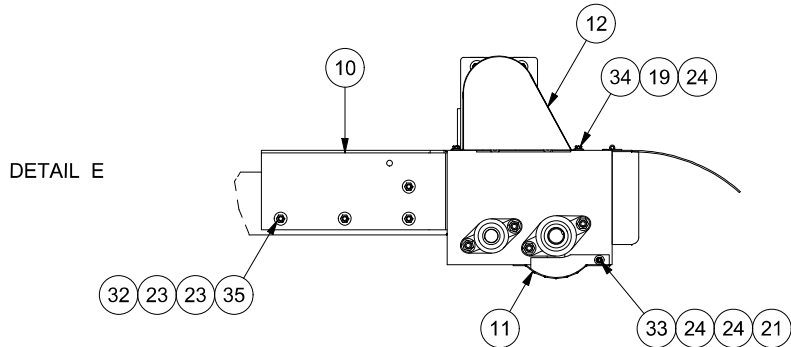
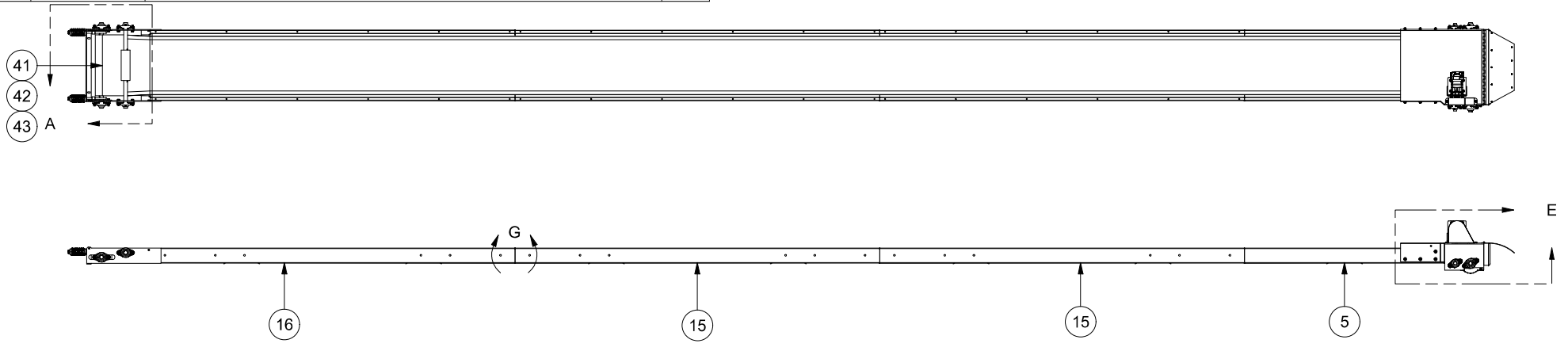


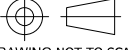
DETAIL V
SCALE 1 / 25



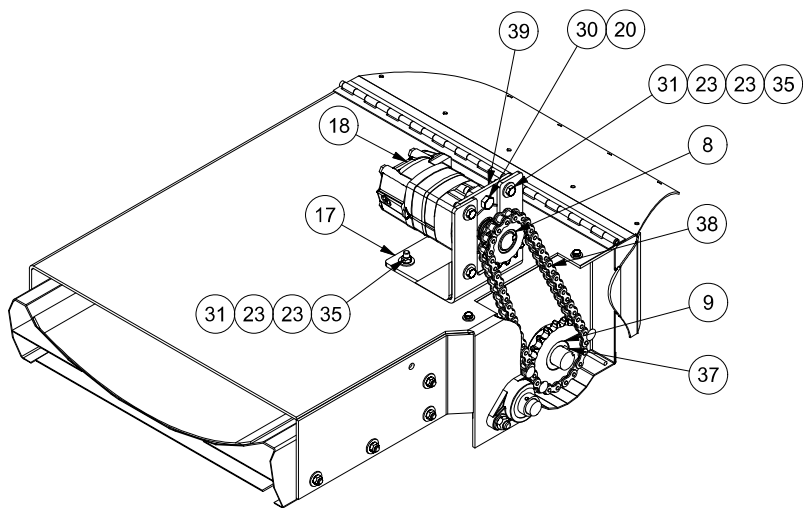
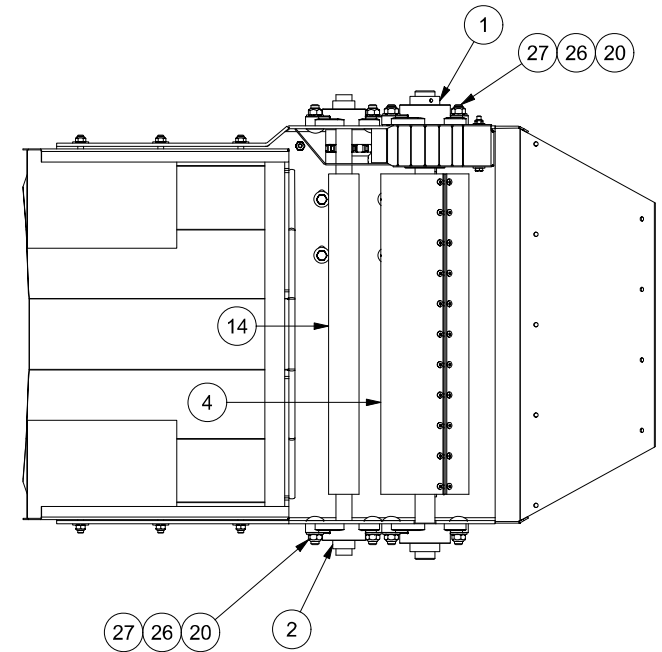
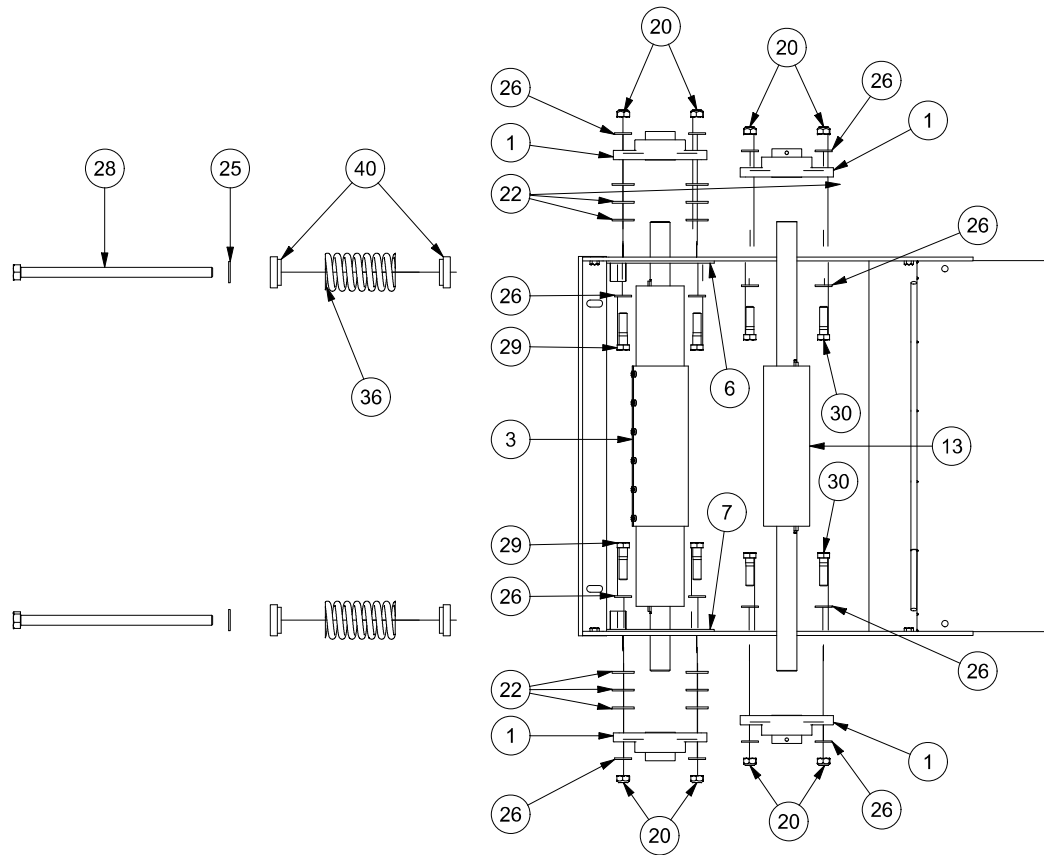
		PROJECT/CUSTOMER NAME:			
		CST39C-AU			
<small>THIS DRAWING IS THE EXCLUSIVE PROPERTY OF MERIDIAN MFG INC. DUPLICATION BY ANY MEANS IS PROHIBITED WITHOUT PERMISSION FROM MERIDIAN MFG INC.</small>		DESCRIPTION:			
		CST-39C RIGHT HAND AU WITH FOLD CONVEYOR			
MATERIAL:		WEIGHT:	PROCESS:		
		22277,96 lbmass			
DRAWN BY:	DRAWN BY DATE:	CHECKED BY:	PART/DRAWING NUMBER:	REV:	SHEET No:
AS	2021-02-09	JP	650508182	C	8 OF 8

ITEM	PART #	DESCRIPTION	QTY	ITEM	PART #	DESCRIPTION	QTY
1	B00000010	STANDARD BEARING - FL206 - 1 1/4" SHAFT - COMPLETE	6	23	1617070004	U.S.S. FLAT WASHER - 3/8" - ZINC PLTD	56
2	B00000005	STANDARD BEARING - FL205 - 1" SHAFT - COMPLETE	2	24	1617070002	U.S.S. FLAT WASHER - 1/4" - ZINC PLTD	4
3	502047	ROLLER - TYPE 3 X 20 X 1 1/4	1	25	1613070008	S.A.E. FLAT WASHER - 5/8" - ZINC PLTD	2
4	502046	DRIVE ROLLER - TYPE 5 X 20 X 1 1/4	1	26	1613070006	S.A.E. FLAT WASHER - 1/2" - ZINC PLTD	24
5	402245	5'-6" CONVEYOR BED SECTION WITH DRIVE END	1	27	1603070248	CARRIAGE BOLT - 1/2"-13 UNC X 1 1/2" - ZINC PLTD - GRADE 5	8
6	402243	ROLLER TENSIONER - FL206 BEARING - RIGHT	1	28	1602100001	HEX BOLT - 5/8-11 X UNC - ZINC PLTD - GRADE 5 - FULL THREAD	2
7	402242	ROLLER TENSIONER - FL206 BEARING - LEFT	1	29	1602070250	HEX BOLT - 1/2"-13 X 2" UNC - ZINC PLTD - GRADE 5	4
8	402241	#60 SPROCKET - 14 TOOTH - 1 1/4 BORE W HUB	1	30	1602070249	HEX BOLT - 1/2"-13 X 1 3/4" UNC - ZINC PLTD - GRADE 5	6
9	402240	#60 SPROCKET - 19 TOOTH - 1 1/4 BORE X HUB	1	31	1602070126	HEX BOLT - 3/8"-16 X 1 1/4" UNC - ZINC PLTD - GRADE 5	20
10	402239	SLAVE DRIVE END	1	32	1602070124	HEX BOLT - 3/8"-16 X 1" UNC - ZINC PLTD - GRADE 5	8
11	402208	BOTTOM CHAIN GUARD	1	33	1602070023	HEX BOLT - 1/4"-20 X 3 1/4" UNC - ZINC PLTD - GRADE 5	1
12	402205	OUTSIDE CHAIN GUARD	1	34	1602070004	HEX BOLT - 1/4"-20 X 3/4" UNC - ZINC PLTD - GRADE 5	2
13	402204	HOLD DOWN ROLLER - TYPE 2 7/8 X 10 X 1 1/4	1	35	1518000004	CONE LOCK NUT - 3/8"-16 UNC - ZINC PLTD	28
14	402200	PINCH ROLLER - TYPE 1 15/16 x 22 x 1	1	36	1228000007	COMPRESSION SPRING - 1 5/8" ID X 4 1/2" L	2
15	402196	10' CONVEYOR BED SECTION WITH SLIDE PLATE	2	38	1111000001	# 60 ROLLER CHAIN (LINKS)	40
16	402194	IDLER END WITH 10' BED SECTION	1	37	11-2300-0020	KEY - 1/4" x 1/4" x 2"	1
17	400259	HYDRAULIC MOTOR MOUNT BRACKET	1	39	102103	HYDRAULIC MOTOR MOUNT BRACKET	1
18	1930000031	HYD. MOTOR - SERIES 2000 - 9.6 CU. IN. - 104-1025-006	1	40	101249	SPRING RETAINER	4
19	1624080009	SPRING LOCK WASHER - 1/4" - ZINC PLTD	2	41	1007060011	SMOOTH 20" - BLACK PVC BELTING - 76'-1"	1
20	1624070003	CONE LOCK NUT - 1/2"-13 UNC - ZINC PLTD	18	42	1001130001	ALIGATOR LACING 1/8 - 3/16" x 20 LINKS	1
21	1624070001	CONE LOCK NUT - 1/4"-20 UNC - ZINC PLTD	1	43	1001000001	ALIGATOR BELT LACING PIN NYLON x 19 1/2"	1
22	1617070006	U.S.S. FLAT WASHER - 1/2" - ZINC PLTD	12				

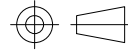


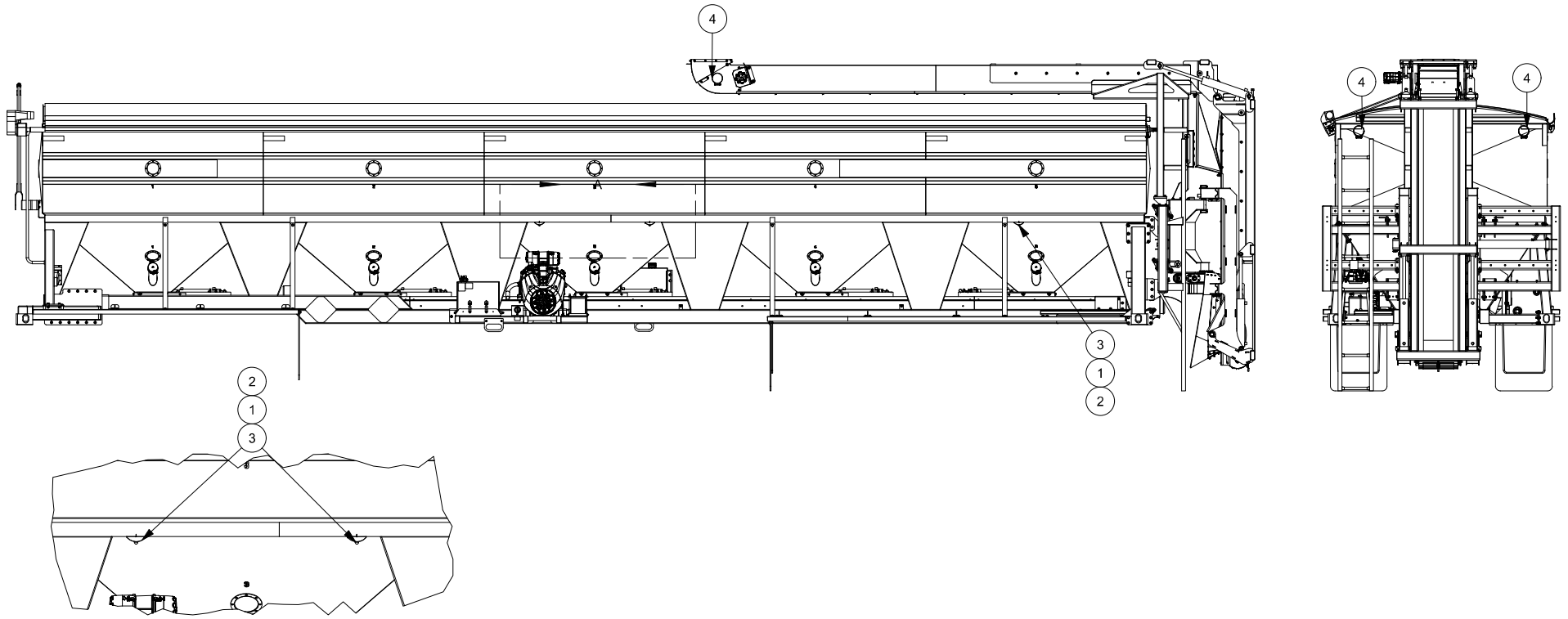
TOLERANCES UNLESS OTHERWISE SPECIFIED FRACTIONAL ±1/16 X.X ±0.1 X.XX ±0.04 X.XXX ±0.010 ANGULAR ±1°		INCH FORMAT UNLESS OTHERWISE SPECIFIED  DRAWING NOT TO SCALE		CONVEY-ALL INDUSTRIES INC. WINKLER, MB CANADA (204) 325-4195	
PART NO. SLV-2039		TITLE SLV CST			
CREATED: 10/30/2008		CST-2039 SLAVE CONVEYOR			
DRAWN BY: FK		MATERIAL		REV. #	
DESIGNED BY: FK		WT: N/A		REF #:	
REVISED BY: FK		SHEET: 1		OF 2	
REVISED: 12/1/2016					

PROPRIETARY AND CONFIDENTIAL
 THE INFORMATION CONTAINED IN THIS DRAWING IS THE SOLE PROPERTY OF CONVEY-ALL INDUSTRIES. ANY REPRODUCTION IN PART OR AS A WHOLE WITHOUT THE WRITTEN PERMISSION OF CONVEY-ALL IS PROHIBITED.




PROPRIETARY AND CONFIDENTIAL
 THE INFORMATION CONTAINED IN THIS DRAWING IS THE
 SOLE PROPERTY OF CONVEY-ALL INDUSTRIES. ANY
 REPRODUCTION IN PART OR AS A WHOLE WITHOUT THE
 WRITTEN PERMISSION OF CONVEY-ALL IS PROHIBITED.

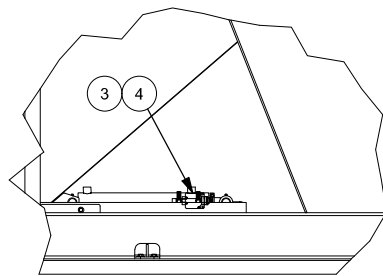
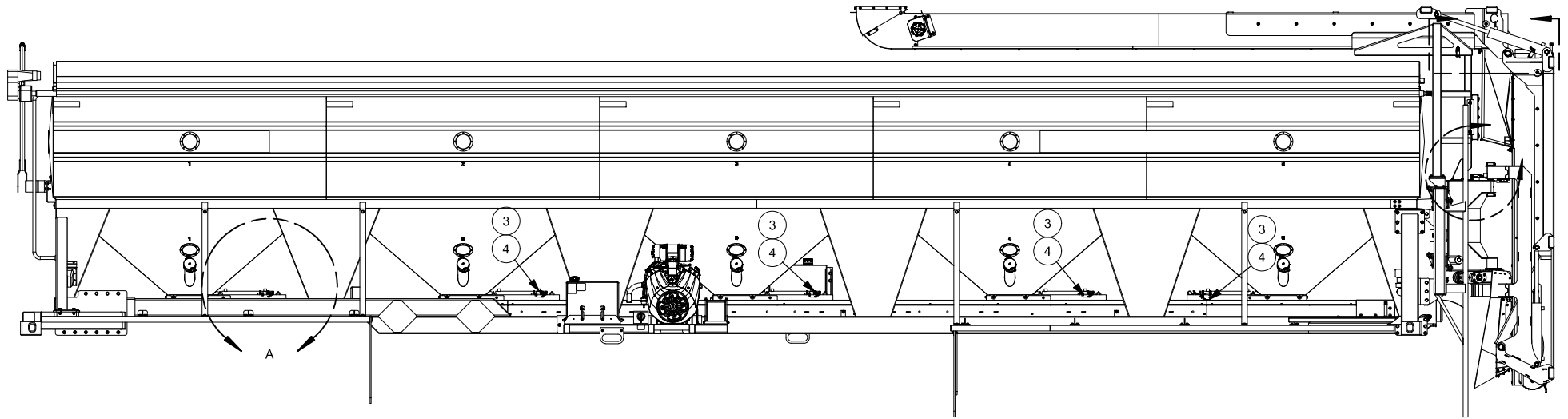
TOLERANCES UNLESS OTHERWISE SPECIFIED FRACTIONAL ±1/16 X.X ±0.1 X.XX ±0.04 X.XXX ±0.010 ANGULAR ±1°		INCH FORMAT UNLESS OTHERWISE SPECIFIED  DRAWING NOT TO SCALE		CONVEY-ALL INDUSTRIES INC. WINKLER, MB CANADA (204) 325-4195	
PART NO. SLV-2039		TITLE CST-SLAVE			
CREATED: 10/30/2008		CST-2039 SLAVE CONVEYOR			
DRAWN BY: FK		MATERIAL		REV. #	
DESIGNED BY: FK		REVISIONS		SHEET: 2 OF 2	
REVISED BY: FK		WT: N/A		REF #:	
REVISED: 12/1/2016		REF #:		SHEET: 2 OF 2	



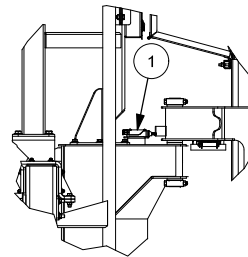
DETAIL A
SCALE 0.03 : 1

ITEM	QTY	MASS	PART #	DESCRIPTION
1	3	.02 lbmass	1419000127	GROMMET
2	3	.09 lbmass	1419000126	MINI 3/4" LED CLEAR LAMP
3	3	.14 lbmass	1419000125	WORK STATION LIGHT BRACKET
4	3	4.00 lbmass	14-1900-0072	UTILITY LIGHT - 5" X 6" - LED

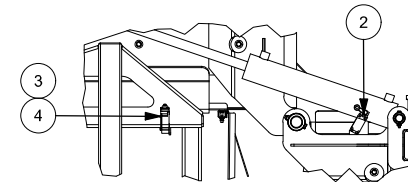
A	DESCRIPTION		HS
REV	DATE	DESIGNER	
REVISION HISTORY			
 <small>WWW.MERIDIANMFG.COM</small>		PROJECT/CUSTOMER NAME:	
		CST39C	
		DESCRIPTION:	
		WORK LIGH KIT	
		WEIGHT:	PROCESS:
		12.77 lbmass	
MATERIAL:			
DRAWN BY:	DRAWN BY DATE:	CHECKED BY:	PART/DRAWING NUMBER:
HS	2021-02-07		650507972
		REV:	SHEET No:
		A	1 OF 1



DETAIL A




DETAIL B



DETAIL C

ITEM	QTY	MASS	PART #	DESCRIPTION
1	1	.10 lbmass	1421000005	LIMIT SWITCH WITH ROLLER PLUNGER
2	1	1.15 lbmass	14-2100-0033	LIMIT SWITCH WITH ROLLER PLUNGER - XCKP2118N12
3	6	.22 lbmass	14-2100-0022	LIMIT SWITCH BUTTON
4	6	1.36 lbmass	14-2100-0021	LIMIT SWITCH BODY

A	DESCRIPTION	DATE	HS
REV			DESIGNER
REVISION HISTORY			
		PROJECT/CUSTOMER NAME:	
		CST39C	
<small>WWW.MERIDIANMFG.COM</small> THIS DRAWING IS THE EXCLUSIVE PROPERTY OF MERIDIAN MFG INC. DUPLICATION BY ANY MEANS IS PROHIBITED WITHOUT PERMISSION FROM MERIDIAN MFG INC.		DESCRIPTION:	
		LIMIT SWITCH KIT	
		WEIGHT:	PROCESS:
		10.74 lbmass	
MATERIAL:			
DRAWN BY:	DRAWN BY DATE:	CHECKED BY:	PART/DRAWING NUMBER:
HS	2021-02-03	EW	650507967
		REV:	SHEET No:
		A	1 OF 2

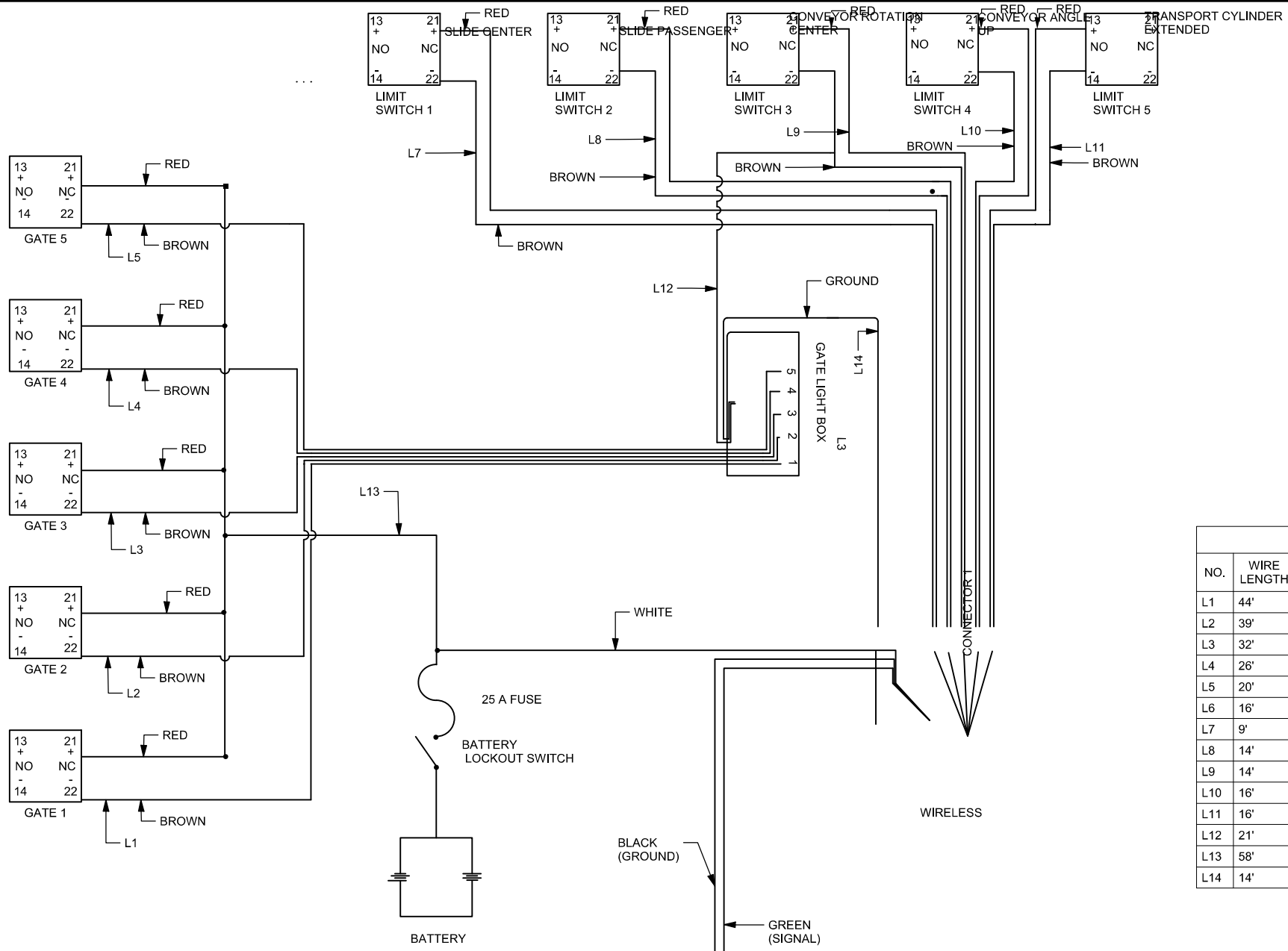


TABLE		
NO.	WIRE LENGTH	WIRE TYPE
L1	44'	14 GA. ELEC. WIRE RED
L2	39'	14 GA. ELEC. WIRE RED
L3	32'	14 GA. ELEC. WIRE RED
L4	26'	14 GA. ELEC. WIRE RED
L5	20'	14 GA. ELEC. WIRE RED
L6	16'	14 GA. ELEC. WIRE RED
L7	9'	16/2 GA. TRAILER WIRE
L8	14'	16/2 GA. TRAILER WIRE
L9	14'	16/2 GA. TRAILER WIRE
L10	16'	16/2 GA. TRAILER WIRE
L11	16'	16/2 GA. TRAILER WIRE
L12	21'	16/2 GA. TRAILER WIRE
L13	58'	14 GA. ELEC. WIRE RED
L14	14'	16/2 GA. TRAILER WIRE

PROJECT/CUSTOMER NAME:

DESCRIPTION:

WEIGHT: PROCESS:

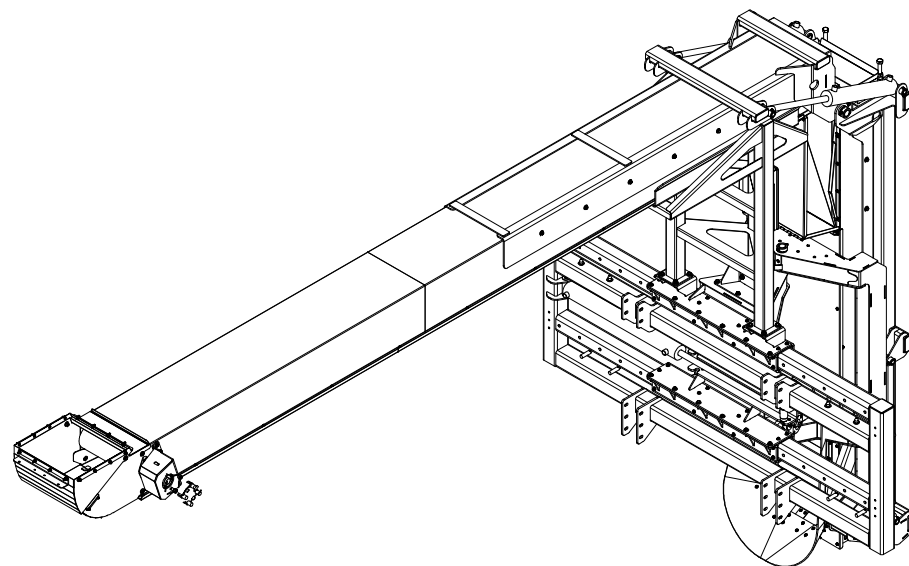
MATERIAL:


WWW.MERIDIANMFG.COM

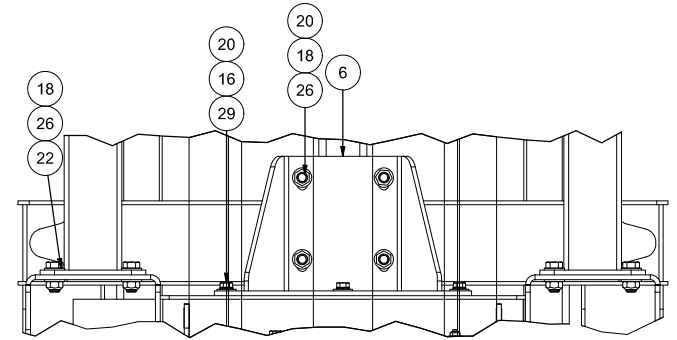
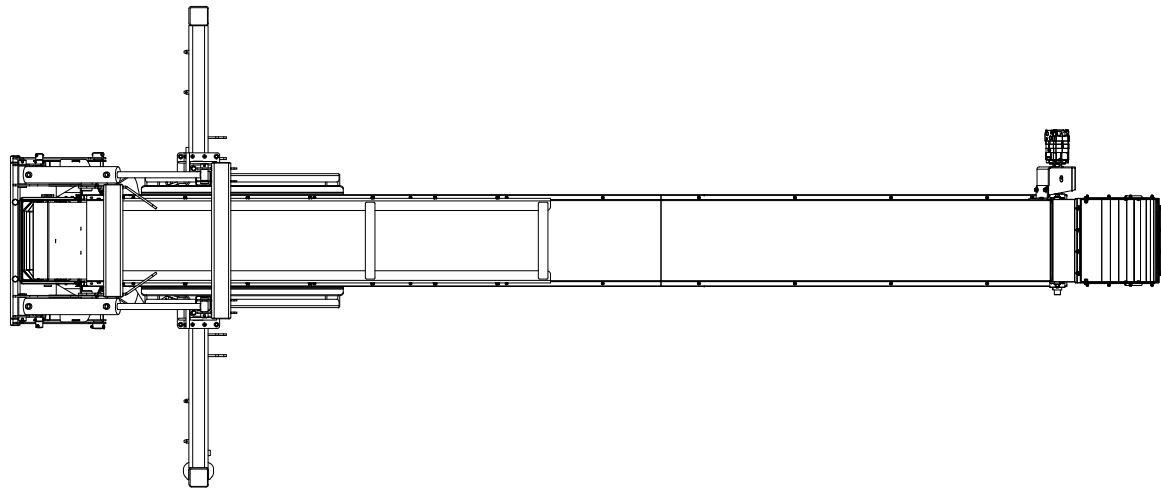
THIS DRAWING IS THE EXCLUSIVE PROPERTY OF MERIDIAN MFG INC. DUPLICATION BY ANY MEANS IS PROHIBITED WITHOUT PERMISSION FROM MERIDIAN MFG INC.

DRAWN BY:	DRAWN BY DATE:	CHECKED BY:	PART/DRAWING NUMBER:	REV:	SHEET No:
	2021-02-03	EW		A	2 OF 2

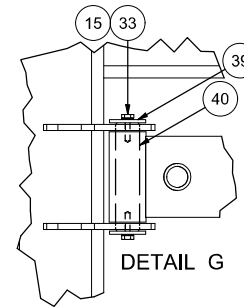
ITEM	PART #	DESCRIPTION	QTY
1	504302	SEED TENDER PADDLE BELT CONVEYOR	1
2	503029	WALL MOUNT GATE LIGHT BOX - 5 LIGHT	1
3	405182	BOLT ON PIVOT FRAME SLIDE ANGLE	2
4	405177	CYLINDER SWITCH PIN - 1 X 4 19/32	1
5	404980	PIVOT STOP	2
6	404811	REAR FOLD CONVEYOR SADDLE MOUNT	1
7	404810	PIVOT FRAME MOUNT	1
8	404790	PIVOT FRAME	1
9	404788	FOLD CONVEYOR CONVEYOR SADDLE	1
10	404785	QUICK ATTACH MAIN FRAME	1
11	19-3000-0044	HYD. MOTOR W/ENCLOSED 9" SLEWING DRIVE 61T	1
12	18-2500-0102	CYLINDER - HYDRAULIC - 3" BORE X 28" STROKE	1
14	18-2500-0066	CYLINDER - HYDRAULIC - 3" BORE X 16" STROKE	2
15	1624080009	SPRING LOCK WASHER - 1/4" - ZINC PLTD	2
16	1624080007	SPRING LOCK WASHER - 3/8" - ZINC PLTD	8
17	1624080005	SPRING LOCK WASHER - 5/8" - ZINC PLTD	30
18	1624070003	CONE LOCK NUT - 1/2"-13 UNC - ZINC PLTD	12
19	1624070001	CONE LOCK NUT - 1/4"-20 UNC - ZINC PLTD	80
20	1617070004	U.S.S. FLAT WASHER - 3/8" - ZINC PLTD	60
21	1617070002	U.S.S. FLAT WASHER - 1/4" - ZINC PLTD	72
22	1613070006	S.A.E. FLAT WASHER - 1/2" - ZINC PLTD	20
23	1611100006	PIN - CLEVIS - 3/8 X 1 1/4 - ZINC PLTD	2
24	1611000005	PIN - HAIR - #10 - 1/8	2
25	1609070008	HEX NUT - 3/4"-10 UNC - ZINC PLTD - GRADE 5	4
26	1602070246	HEX BOLT - 1/2"-13 X 1 1/4" UNC - ZINC PLTD - GRADE 5	12
27	1602070133	HEX BOLT - 3/8"-16 X 2 3/4" UNC - ZINC PLTD - GRADE 5	4
28	1602070128	HEX BOLT - 3/8"-16 X 1 1/2" UNC - ZINC PLTD - GRADE 5	20
29	1602070124	HEX BOLT - 3/8"-16 X 1" UNC - ZINC PLTD - GRADE 5	7
30	1602070122	HEX BOLT - 3/8"-16 X 3/4" UNC - ZINC PLTD - GRADE 5	5
31	1602070028	HEX BOLT - 5/8"-11 X 3 1/4" UNC - ZINC PLTD - GRADE 5 - FULL THREAD	30
32	1602070012	HEX BOLT - 1/4"-20 X 2" UNC - ZINC PLTD - GRADE 5	8
33	1602070004	HEX BOLT - 1/4"-20 X 3/4" UNC - ZINC PLTD - GRADE 5	2
34	16-1400-0042	COUNTERSUNK FLAT HEAD- SQUARE - 1/4-20 UNC - 1 - ZINC PLTD	64
35	1518000004	CONE LOCK NUT - 3/8"-16 UNC - ZINC PLTD	28
36	14-1900-0072	UTILITY LIGHT - 5" X 6" - LED	1
37	118674	PIN - 1 X 6 3/4	2
38	118673	PIN - 1 X 5	2
39	118345	CYLINDER PIN RETAINER PLATE	2
40	118343	PIN - 1 X 4 1/2	1
41	116846	CYLINDER PIN SPACER BUSHING	2
42	116480	CYLINDER PIN LOCK PLATE	1
43	115425	PIN - 1 1/2 X 7 3/16	2
44	115243	PIN - 1 1/2 X 11 1/2	1
45	115154	PIVOT FRAME MOUNT SLIDE	8
46	103398	SHAFT COLLAR 1 1/2" - ZINC PLATED	2
47	102400	SHAFT COLLAR - 1"	4



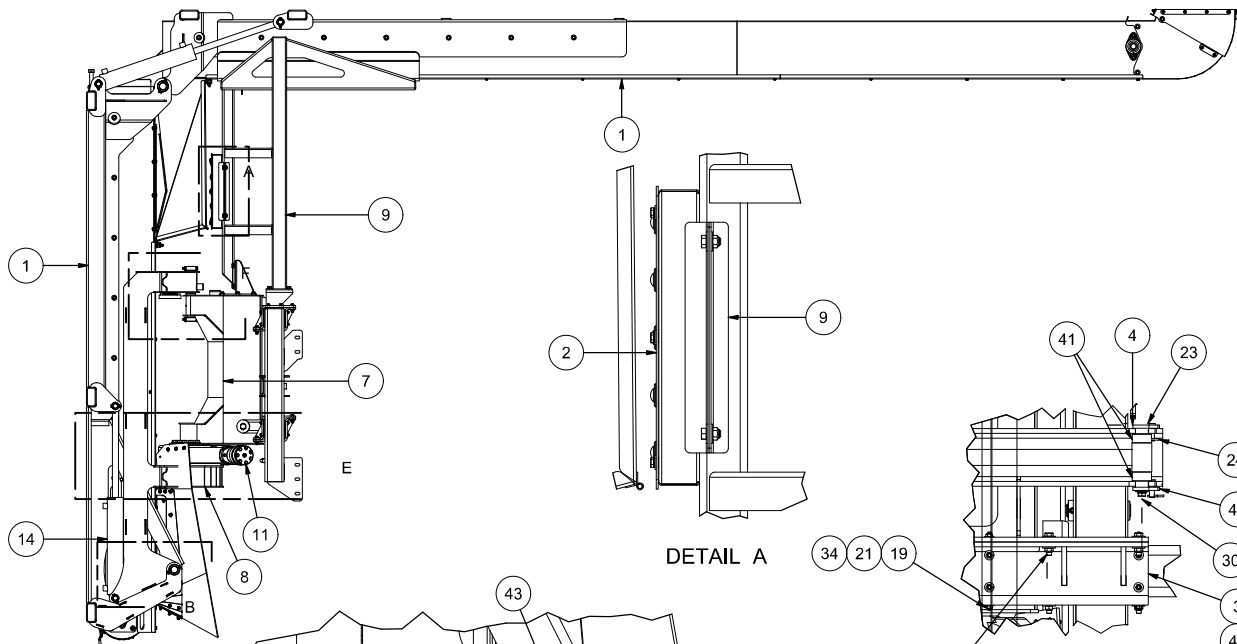
		PROJECT/CUSTOMER NAME:			
		CST COMMON			
<small>WWW.MERIDIANMFG.COM</small> THIS DRAWING IS THE EXCLUSIVE PROPERTY OF MERIDIAN MFG INC. DUPLICATION BY ANY MEANS IS PROHIBITED WITHOUT PERMISSION FROM MERIDIAN MFG INC.		DESCRIPTION:		PROCESS:	
		FOLD CONVEYOR ASSEMBLY		WEIGHT:	
MATERIAL:					
DRAWN BY:	DRAWN BY DATE:	CHECKED BY:	PART/DRAWING NUMBER:	REV:	SHEET No:
TF	01/30/2014	VH	503537	B	1 OF 4



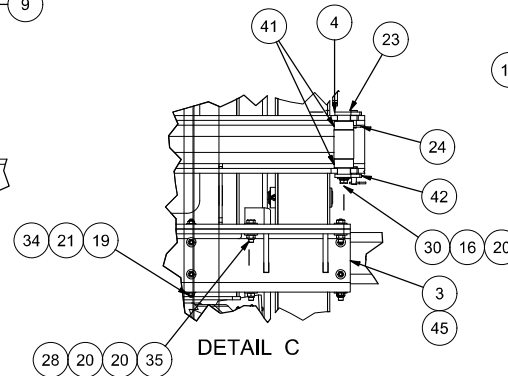
DETAIL D



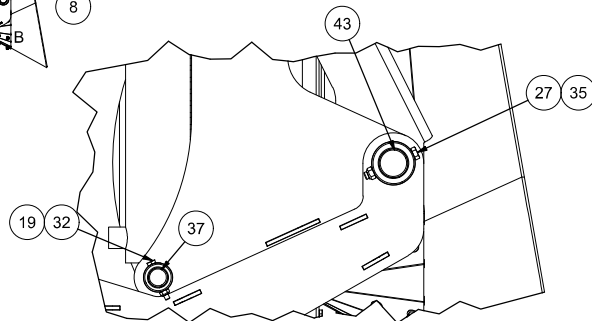
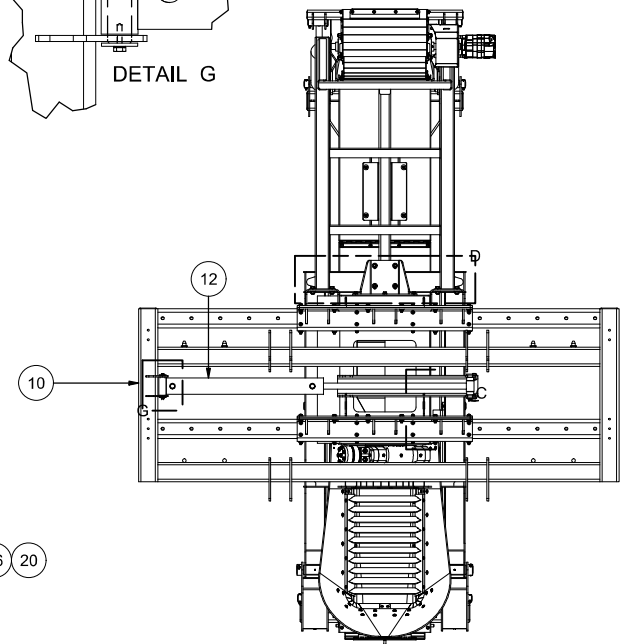
DETAIL G




DETAIL A

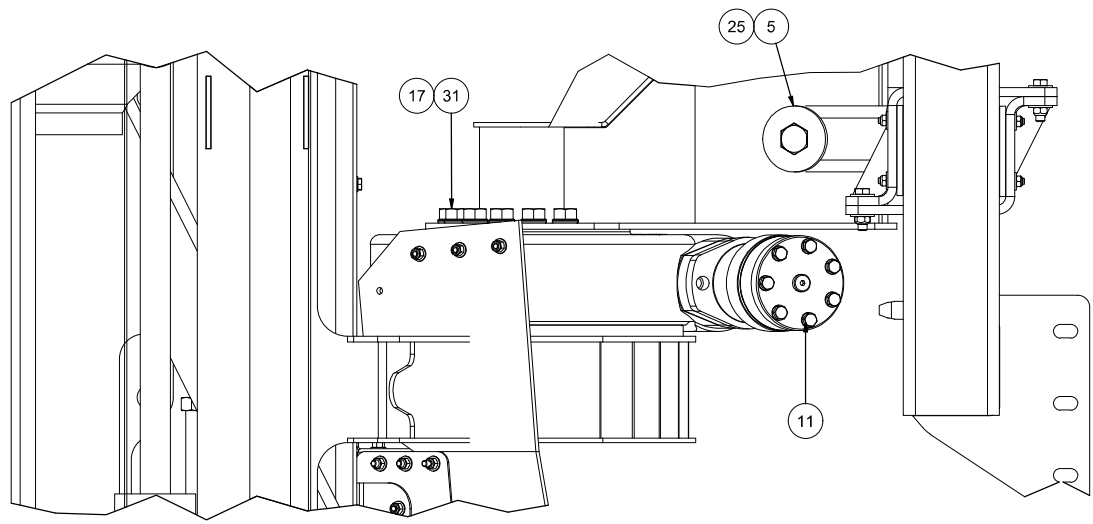


DETAIL C

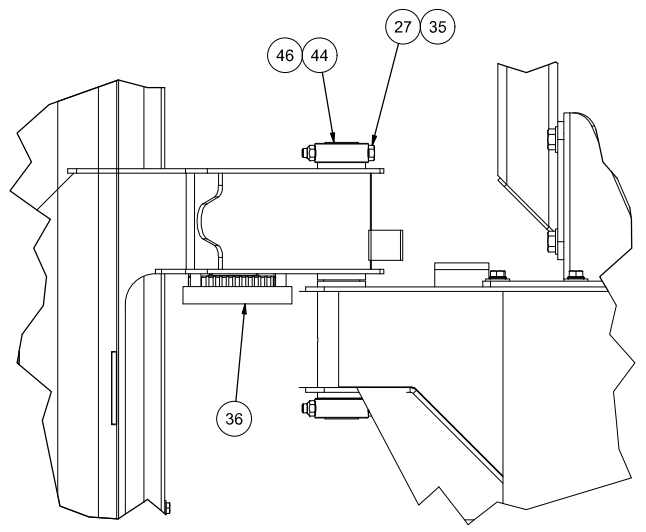


DETAIL B


		PROJECT/CUSTOMER NAME:			
		CST COMMON			
<small>WWW.MERIDIANMFG.COM</small> THIS DRAWING IS THE EXCLUSIVE PROPERTY OF MERIDIAN MFG INC. DUPLICATION BY ANY MEANS IS PROHIBITED WITHOUT PERMISSION FROM MERIDIAN MFG INC.		DESCRIPTION:		PROCESS:	
		FOLD CONVEYOR ASSEMBLY		WEIGHT:	
MATERIAL:					
DRAWN BY:	DRAWN BY DATE:	CHECKED BY:	PART/DRAWING NUMBER:	REV:	SHEET No:
TF	1/30/2014	VH	503537	B	2 OF 4

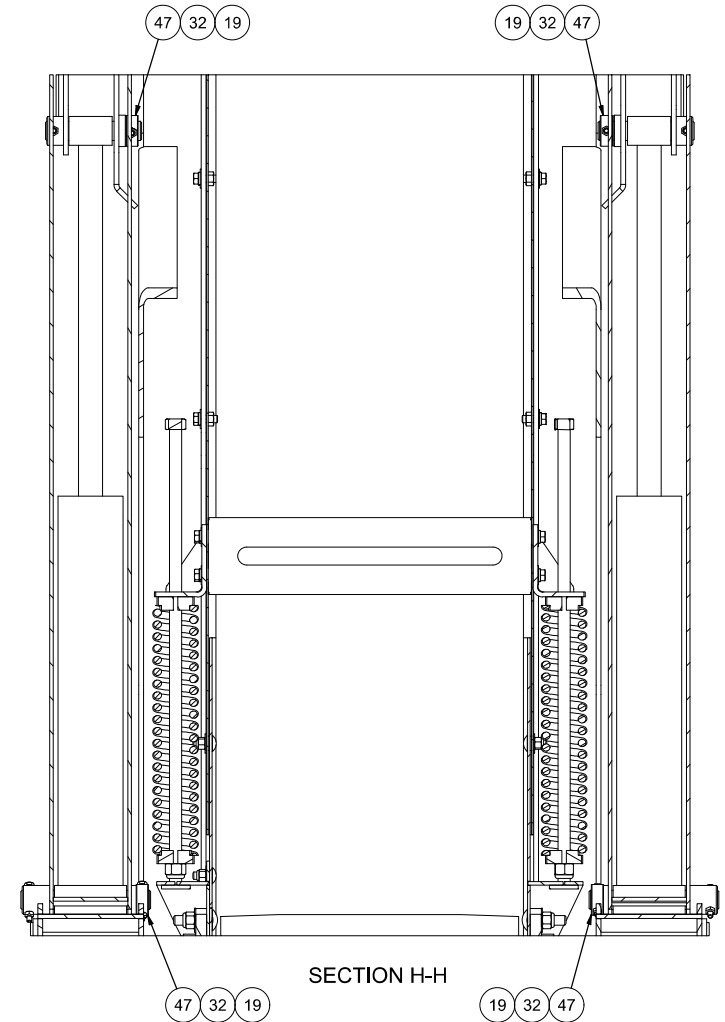
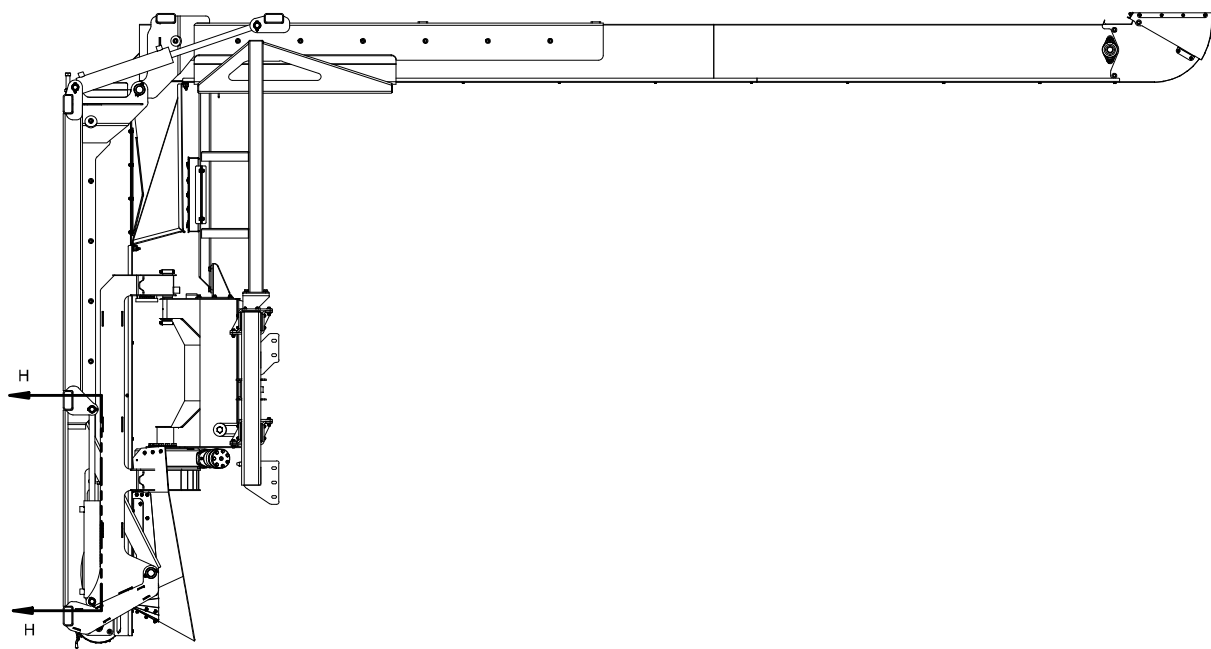



DETAIL E



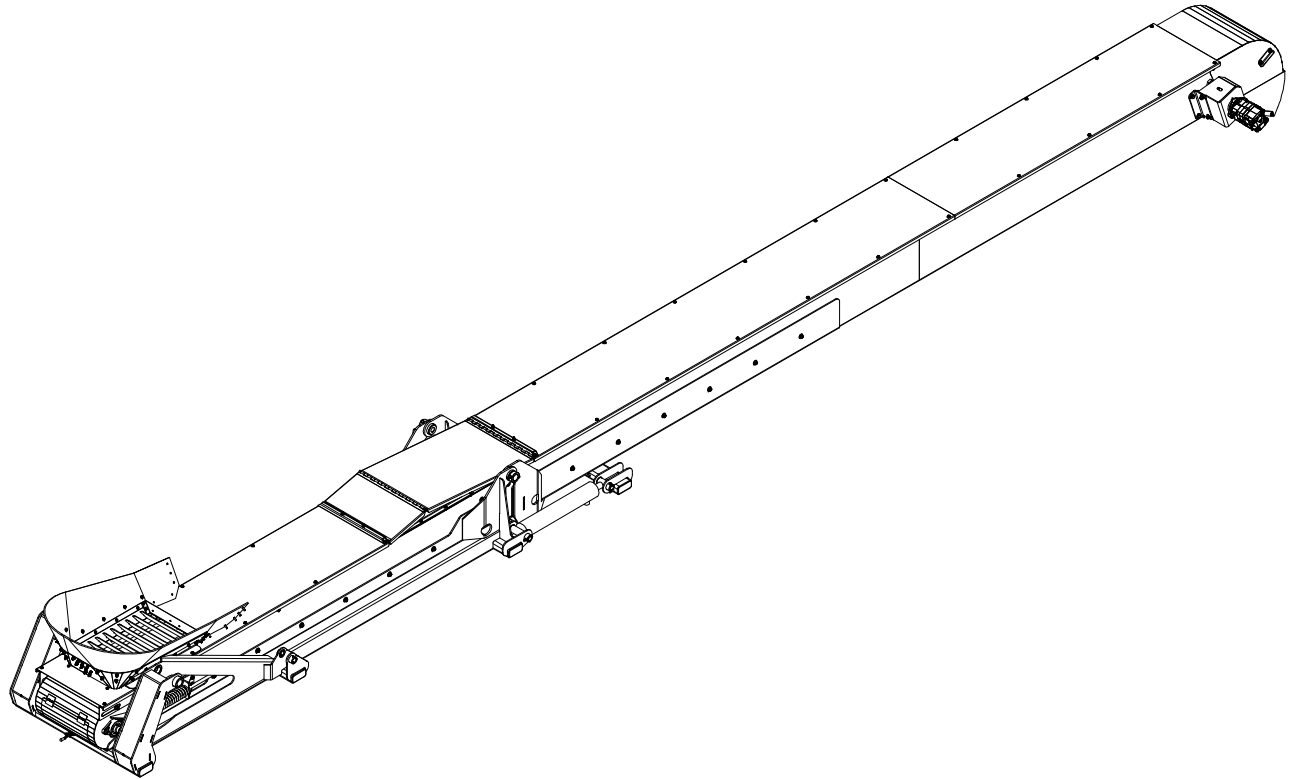
DETAIL F

		PROJECT/CUSTOMER NAME:			
		CST COMMON			
<small>WWW.MERIDIANMFG.COM</small> THIS DRAWING IS THE EXCLUSIVE PROPERTY OF MERIDIAN MFG INC. DUPLICATION BY ANY MEANS IS PROHIBITED WITHOUT PERMISSION FROM MERIDIAN MFG INC.		DESCRIPTION:		PROCESS:	
		FOLD CONVEYOR ASSEMBLY			
		WEIGHT:	2555.88 lbmass		
MATERIAL:					
DRAWN BY:	DRAWN BY DATE:	CHECKED BY:	PART/DRAWING NUMBER:	REV:	SHEET No:
TF	1/30/2014	VH	503537	B	3 OF 4



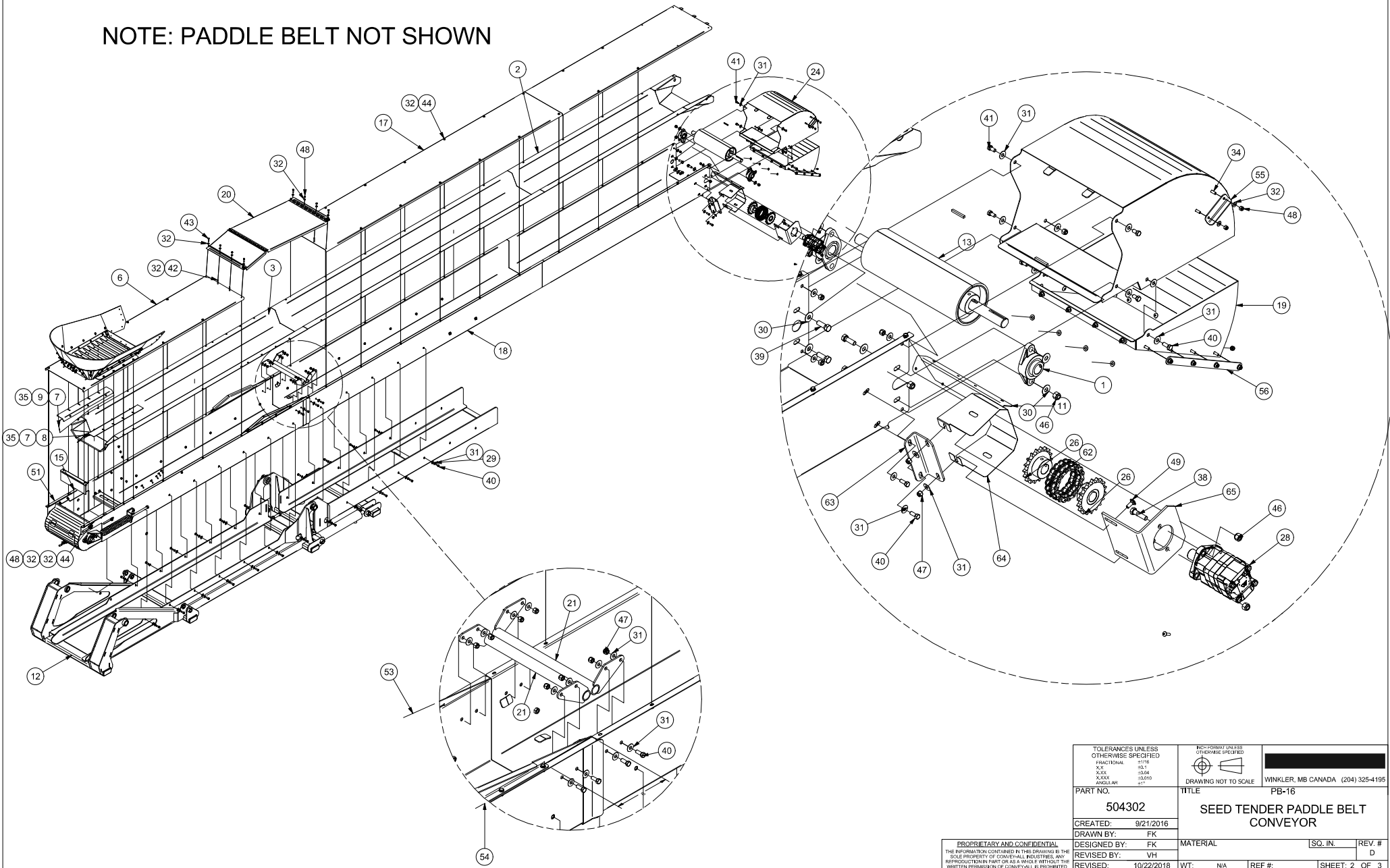
		PROJECT/CUSTOMER NAME:			
		CST COMMON			
<small>WWW.MERIDIANMFG.COM</small> THIS DRAWING IS THE EXCLUSIVE PROPERTY OF MERIDIAN MFG INC. DUPLICATION BY ANY MEANS IS PROHIBITED WITHOUT PERMISSION FROM MERIDIAN MFG INC.		DESCRIPTION:			
		FOLD CONVEYOR ASSEMBLY			
MATERIAL:		WEIGHT:	PROCESS:		
		2555.88 lbmass			
DRAWN BY:	DRAWN BY DATE:	CHECKED BY:	PART/DRAWING NUMBER:	REV:	SHEET No:
TF	1/30/2014	VH	503537	B	4 OF 4

ITEM	PART #	DESCRIPTION	QTY
1	B-0000-0010	BEARING - FL206 - 1 1/4" SHAFT - COMPLETE	4
2	650406040	UPPER SLIDE PAN	1
3	650406038	LOWER SLIDE PAN	1
4	650120982	HOPPER SIDE PANEL MOUNT ANGLE	2
5	650120981	HOPPER REAR PANEL	1
6	650120980	BOTTOM LID	1
7	650120979	HOPPER FLASHING	2
8	650120859	CONVEYOR BED FLASHING PLATE - 10'	1
9	650120858	CONVEYOR BED FLASHING PLATE - 10'	1
10	650120771	BRUSH HOLDER	1
11	650120497	DISCHARGE LIGHT/CAMERA MOUNT	1
12	504124	FOLD CONVEYOR LIFT FRAME	1
13	501114	ROLLER - TYPE 5 x 16 x 1.25	1
14	405727	FIXED TAIL ROLLER TENSIONING BEARING MOUNT	1
15	405717	BOTTOM RETURN SECTION	1
16	405712	FIXED TAIL ROLLER TENSIONING MOUNT	1
17	405477	TOP SECTION LID W/TABS	1
18	405476	MIDDLE RETURN TRAY	1
19	404979	PIVOT DISCHARGE HOOD	1
20	404977	FOLDING LID	1
21	404858	CONVEYOR BELT RETAINER	2
22	404856	SPRING TENSIONER MOUNT BRACKET	2
23	404841	HOPPER GRATE	1
24	404806	DISCHARGE HOOD	1
25	403087	FLUTED TAIL ROLLER - 5" X 16" X 21 1/2"	1
26	401237	SPROCKET #60 - 18 TOOTH - 1 1/4 BORE X HUB	2
27	401143	THREADED ROD - TYPE 24 X .625D	2
28	1930000021	HYD MOTOR 7.67 CU. IN 2000 SERIES	1
29	1624050002	SPRING LOCK WASHER - 3/8" - STAINLESS STEEL	36
30	1617050006	FLAT WASHER - 1/2" - STAINLESS STEEL	12
31	1617050004	FLAT WASHER - 3/8" - STAINLESS STEEL	82
32	1617050002	FLAT WASHER - 1/4" - STAINLESS STEEL	211
33	1614000011	TRUSS HEAD SCREW - SQUARE - 1/4-20 UNC x 1 - ZINC PLTD	33
34	1614000010	TRUSS HEAD SCREW - SQUARE - 1/4-20 UNC x 3/4 - ZINC PLTD	37
35	1612000017	RIVET - 3/16 X 0 - 0.375 - LARGE HEAD - STAINLES STEEL	6
46	1607050005	NYLON INSERT LOCK NUT - 1/2"-13 UNC - STAINLESS STEEL	10
47	1607050003	NYLON INSERT LOCK NUT - 3/8"-16 UNC - STAINLESS STEEL	28
48	1607050001	NYLON INSERT LOCK NUT - 1/4"-20 UNC - STAINLESS STEEL	130
36	1603050247	CARRIAGE BOLT - 3/8"-16 UNC X 1" - STAINLESS STEEL -	8
37	1603050005	CARRIAGE BOLT - 1/2"-13 UNC X 2" - STAINLESS STEEL -	4
38	1602050250	HEX BOLT - 1/2"-13 X 2" UNC - STAINLESS STEEL	2
39	1602050248	HEX BOLT - 1/2"-13 X 1 1/2" UNC - STAINLESS STEEL	4
40	1602050124	HEX BOLT - 3/8"-16 X 1" UNC - STAINLESS STEEL	47
41	1602050122	HEX BOLT - 3/8"-16 X 3/4" UNC - STAINLESS STEEL	5
42	1602050008	HEX BOLT - 1/4"-20 X 1 3/4" UNC - STAINLESS STEEL	4
43	1602050006	HEX BOLT - 1/4"-20 X 1" UNC - STAINLESS STEEL	4
44	1602050004	HEX BOLT - 1/4"-20 X 3/4" UNC - STAINLESS STEEL	48
45	16-0705-0007	NYLON INSERT LOCK NUT - 5/8"-11 UNC - STAINLESS STEEL	2
49	16-0307-0124	CARRIAGE BOLT - 3/8" x 1" UNC - PLTD - GRD 5	2
50	12-2800-0030	COMPRESSION SPRING - 1 5/8" ID X 13" L	2
51	119476	SPACER BAR	2
52	119387	CARRIAGE BOLT SPACER	6
53	117531	FOLDING COVER REST - RIGHT	1
54	117530	FOLDING COVER REST - LEFT	1
55	115926	PIVOT DISCHARGE HOOD STOP	2
56	115905	DISCHARGE CANVAS INSERT FLAT BAR	4
57	115362	RUBBER HOPPER	1
58	115327	HOPPER PANEL SEAM COVER PLATE	1
59	115326	HOPPER SIDE PANEL - RIGHT	1
60	113156	HOPPER SIDE PANEL - LEFT	1
61	1120000050	4 INCH BRUSH	1
62	11-1100-0017	ROLLER CHAIN - #60-2 (LINKS)	17
63	103217	HYDRAULIC MOTOR BRACKET - INNER	1
64	103216	HYDRAULIC MOTOR GEAR GUARD	1
65	103215	HYDRAULIC MOTOR BRACKET	1
66	1014040031	PADDLE BELT - 53'-4"	1
67	101249	SPRING RETAINER	2



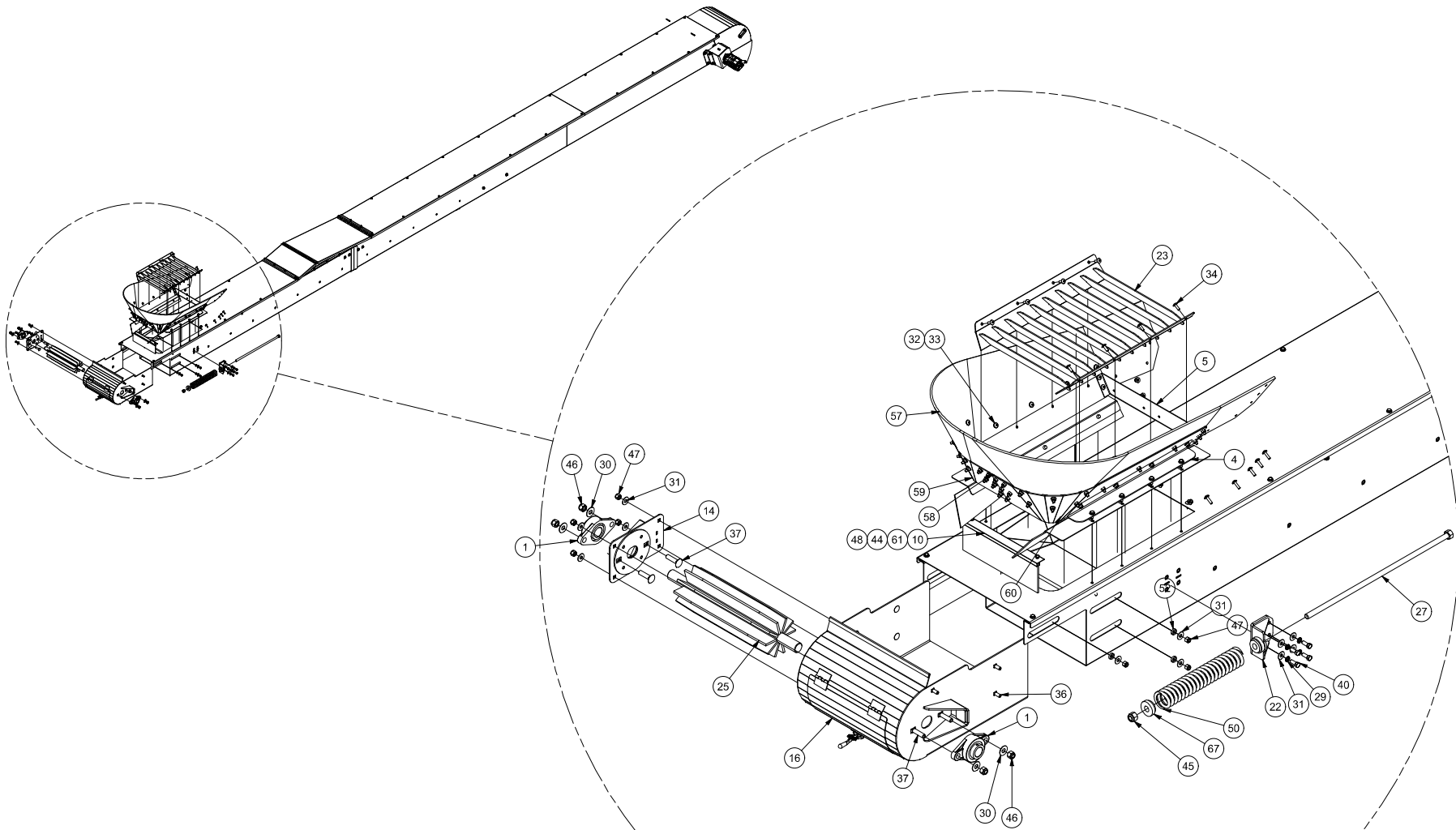
TOLERANCES UNLESS OTHERWISE SPECIFIED FRACTIONAL: 1/16, 1/8, 1/4, 3/8, 1/2, 5/8, 3/4, 7/8, 1, 1 1/4, 1 1/2, 1 3/4, 2, 3, 4, 6, 8, 12, 18, 24, 30, 36, 48, 60, 72, 96, 120, 144, 180, 240, 300, 360, 480, 600, 720, 960, 1200, 1440, 1800, 2400, 3000, 3600, 4800, 6000, 7200, 9600, 12000, 14400, 18000, 24000, 30000, 36000, 48000, 60000, 72000, 96000, 120000, 144000, 180000, 240000, 300000, 360000, 480000, 600000, 720000, 960000, 1200000, 1440000, 1800000, 2400000, 3000000, 3600000, 4800000, 6000000, 7200000, 9600000, 12000000, 14400000, 18000000, 24000000, 30000000, 36000000, 48000000, 60000000, 72000000, 96000000, 120000000, 144000000, 180000000, 240000000, 300000000, 360000000, 480000000, 600000000, 720000000, 960000000, 1200000000, 1440000000, 1800000000, 2400000000, 3000000000, 3600000000, 4800000000, 6000000000, 7200000000, 9600000000, 12000000000, 14400000000, 18000000000, 24000000000, 30000000000, 36000000000, 48000000000, 60000000000, 72000000000, 96000000000, 120000000000, 144000000000, 180000000000, 240000000000, 300000000000, 360000000000, 480000000000, 600000000000, 720000000000, 960000000000, 1200000000000, 1440000000000, 1800000000000, 2400000000000, 3000000000000, 3600000000000, 4800000000000, 6000000000000, 7200000000000, 9600000000000, 12000000000000, 14400000000000, 18000000000000, 24000000000000, 30000000000000, 36000000000000, 48000000000000, 60000000000000, 72000000000000, 96000000000000, 120000000000000, 144000000000000, 180000000000000, 240000000000000, 300000000000000, 360000000000000, 480000000000000, 600000000000000, 720000000000000, 960000000000000, 1200000000000000, 1440000000000000, 1800000000000000, 2400000000000000, 3000000000000000, 3600000000000000, 4800000000000000, 6000000000000000, 7200000000000000, 9600000000000000, 12000000000000000, 14400000000000000, 18000000000000000, 24000000000000000, 30000000000000000, 36000000000000000, 48000000000000000, 60000000000000000, 72000000000000000, 96000000000000000, 120000000000000000, 144000000000000000, 180000000000000000, 240000000000000000, 300000000000000000, 360000000000000000, 480000000000000000, 600000000000000000, 720000000000000000, 960000000000000000, 1200000000000000000, 1440000000000000000, 1800000000000000000, 2400000000000000000, 3000000000000000000, 3600000000000000000, 4800000000000000000, 6000000000000000000, 7200000000000000000, 9600000000000000000, 12000000000000000000, 14400000000000000000, 18000000000000000000, 24000000000000000000, 30000000000000000000, 36000000000000000000, 48000000000000000000, 60000000000000000000, 72000000000000000000, 96000000000000000000, 120000000000000000000, 144000000000000000000, 180000000000000000000, 240000000000000000000, 300000000000000000000, 360000000000000000000, 480000000000000000000, 600000000000000000000, 720000000000000000000, 960000000000000000000, 1200000000000000000000, 1440000000000000000000, 1800000000000000000000, 2400000000000000000000, 3000000000000000000000, 3600000000000000000000, 4800000000000000000000, 6000000000000000000000, 7200000000000000000000, 9600000000000000000000, 12000000000000000000000, 14400000000000000000000, 18000000000000000000000, 24000000000000000000000, 30000000000000000000000, 36000000000000000000000, 48000000000000000000000, 60000000000000000000000, 72000000000000000000000, 96000000000000000000000, 120000000000000000000000, 144000000000000000000000, 180000000000000000000000, 240000000000000000000000, 300000000000000000000000, 360000000000000000000000, 480000000000000000000000, 600000000000000000000000, 720000000000000000000000, 960000000000000000000000, 1200000000000000000000000, 1440000000000000000000000, 1800000000000000000000000, 2400000000000000000000000, 3000000000000000000000000, 3600000000000000000000000, 4800000000000000000000000, 6000000000000000000000000, 7200000000000000000000000, 9600000000000000000000000, 12000000000000000000000000, 14400000000000000000000000, 18000000000000000000000000, 24000000000000000000000000, 30000000000000000000000000, 36000000000000000000000000, 48000000000000000000000000, 60000000000000000000000000, 72000000000000000000000000, 96000000000000000000000000, 120000000000000000000000000, 144000000000000000000000000, 180000000000000000000000000, 240000000000000000000000000, 300000000000000000000000000, 360000000000000000000000000, 480000000000000000000000000, 600000000000000000000000000, 720000000000000000000000000, 960000000000000000000000000, 1200000000000000000000000000, 1440000000000000000000000000, 1800000000000000000000000000, 2400000000000000000000000000, 3000000000000000000000000000, 3600000000000000000000000000, 4800000000000000000000000000, 6000000000000000000000000000, 7200000000000000000000000000, 9600000000000000000000000000, 12000000000000000000000000000, 14400000000000000000000000000, 18000000000000000000000000000, 24000000000000000000000000000, 30000000000000000000000000000, 36000000000000000000000000000, 48000000000000000000000000000, 60000000000000000000000000000, 72000000000000000000000000000, 96000000000000000000000000000, 120000000000000000000000000000, 144000000000000000000000000000, 180000000000000000000000000000, 240000000000000000000000000000, 300000000000000000000000000000, 360000000000000000000000000000, 480000000000000000000000000000, 600000000000000000000000000000, 720000000000000000000000000000, 960000000000000000000000000000, 1200000000000000000000000000000, 1440000000000000000000000000000, 1800000000000000000000000000000, 2400000000000000000000000000000, 3000000000000000000000000000000, 3600000000000000000000000000000, 4800000000000000000000000000000, 6000000000000000000000000000000, 7200000000000000000000000000000, 9600000000000000000000000000000, 12000000000000000000000000000000, 14400000000000000000000000000000, 18000000000000000000000000000000, 24000000000000000000000000000000, 30000000000000000000000000000000, 36000000000000000000000000000000, 48000000000000000000000000000000, 60000000000000000000000000000000, 72000000000000000000000000000000, 96000000000000000000000000000000, 120000000000000000000000000000000, 144000000000000000000000000000000, 180000000000000000000000000000000, 240000000000000000000000000000000, 300000000000000000000000000000000, 360000000000000000000000000000000, 480000000000000000000000000000000, 600000000000000000000000000000000, 720000000000000000000000000000000, 960000000000000000000000000000000, 1200000000000000000000000000000000, 1440000000000000000000000000000000, 1800000000000000000000000000000000, 2400000000000000000000000000000000, 3000000000000000000000000000000000, 3600000000000000000000000000000000, 4800000000000000000000000000000000, 6000000000000000000000000000000000, 7200000000000000000000000000000000, 9600000000000000000000000000000000, 12000000000000000000000000000000000, 14400000000000000000000000000000000, 18000000000000000000000000000000000, 24000000000000000000000000000000000, 30000000000000000000000000000000000, 36000000000000000000000000000000000, 48000000000000000000000000000000000, 60000000000000000000000000000000000, 72000000000000000000000000000000000, 96000000000000000000000000000000000, 120000000000000000000000000000000000, 144000000000000000000000000000000000, 180000000000000000000000000000000000, 240000000000000000000000000000000000, 300000000000000000000000000000000000, 360000000000000000000000000000000000, 480000000000000000000000000000000000, 600000000000000000000000000000000000, 720000000000000000000000000000000000, 960000000000000000000000000000000000, 1200000000000000000000000000000000000, 1440000000000000000000000000000000000, 1800000000000000000000000000000000000, 2400000000000000000000000000000000000, 3000000000000000000000000000000000000, 3600000000000000000000000000000000000, 4800000000000000000000000000000000000, 6000000000000000000000000000000000000, 7200000000000000000000000000000000000, 9600000000000000000000000000000000000, 12000000000000000000000000000000000000, 14400000000000000000000000000000000000, 18000000000000000000000000000000000000, 24000000000000000000000000000000000000, 30000000000000000000000000000000000000, 36000000000000000000000000000000000000, 48000000000000000000000000000000000000, 60000000000000000000000000000000000000, 72000000000000000000000000000000000000, 96000000000000000000000000000000000000, 120000000000000000000000000000000000000, 144000000000000000000000000000000000000, 180000000000000000000000000000000000000, 240000000000000000000000000000000000000, 300000000000000000000000000000000000000, 360000000000000000000000000000000000000, 480000000000000000000000000000000000000, 600000000000000000000000000000000000000, 720000000000000000000000000000000000000, 960000000000000000000000000000000000000, 1200000000000000000000000000000000000000, 1440000000000000000000000000000000000000, 1800000000000000000000000000000000000000, 2400000000000000000000000000000000000000, 3000000000000000000000000000000000000000, 36000000000000	
---	--

NOTE: PADDLE BELT NOT SHOWN



TOLERANCES UNLESS OTHERWISE SPECIFIED		DRAWING NOT TO SCALE		WINKLER, MB CANADA (204) 325-4195	
FRACTIONAL: 1/16 X.X: 1/8 X.XX: 1/16 X.XXX: 1/32 ANGLES: 90°					
PART NO.	504302	TITLE	PB-16		
CREATED:	9/21/2016	SEED TENDER PADDLE BELT CONVEYOR			
DRAWN BY:	FK	MATERIAL	[SQ. IN.]	REV. #	D
DESIGNED BY:	FK	WT:	N/A	REF #:	
REVISED BY:	VH	SHEET: 2 OF 3			
REVISED:	10/22/2018				

PROPRIETARY AND CONFIDENTIAL
 THE INFORMATION CONTAINED IN THIS DRAWING IS THE SOLE PROPERTY OF CONVEY-ALL INDUSTRIES, ANY REPRODUCTION IN ANY FORM OR BY ANY MEANS WITHOUT THE WRITTEN PERMISSION OF CONVEY-ALL IS PROHIBITED.



TOLERANCES UNLESS OTHERWISE SPECIFIED
 FRACTIONAL: 1/16
 X'S: 1/32
 X'SX: 1/64
 X'SXX: 1/320
 ANGLES: 90°

PRO FORMA UNLESS OTHERWISE SPECIFIED
 DRAWING NOT TO SCALE

WINKLER, MB CANADA (204) 325-4195

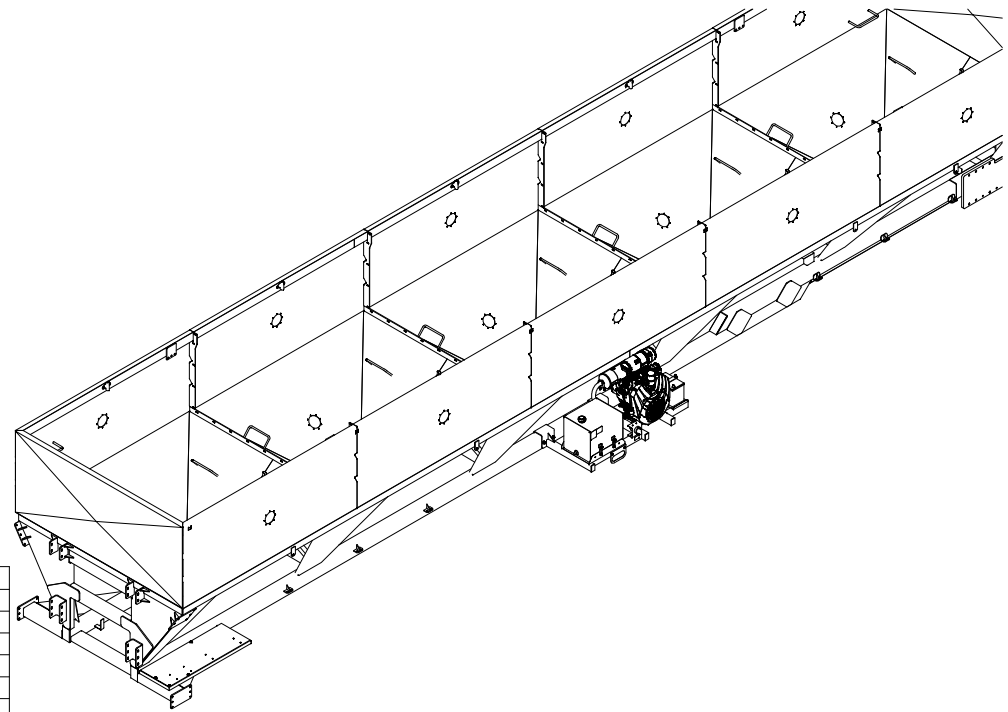
PART NO.
504302
 CREATED: 9/21/2016
 DRAWN BY: FK

TITLE
SEED TENDER PADDLE BELT CONVEYOR
 PB-16

DESIGNED BY: FK
 REVISED BY: VH
 REVISED: 10/22/2018


MATERIAL [SQ. IN.]
 WT: N/A REF #: SHEET: 3 OF 3

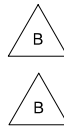
PROPRIETARY AND CONFIDENTIAL
 THE INFORMATION CONTAINED IN THIS DRAWING IS THE SOLE PROPERTY OF CONVEY-ALL INDUSTRIES, ANY REPRODUCTION IN PART OR AS A WHOLE WITHOUT THE WRITTEN PERMISSION OF CONVEY-ALL IS PROHIBITED.

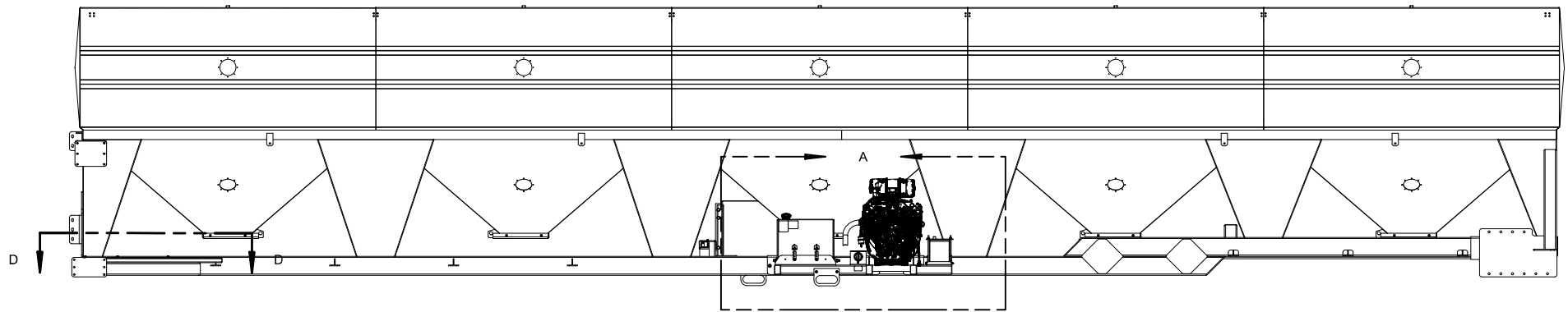


ITEM	QTY	MASS	PART #	DESCRIPTION
1	1	.02 lbmass	3622000005	IMPORTANT-GAS ONLY DECAL
2	1	.01 lbmass	3622000003	IMPORTANT-USE ONLY HYDREX MV32 DECAL
3	1	.03 lbmass	3617000004	DANGER-NO SMOKING DECAL
4	1	.01 lbmass	3610000055	BATTERY LOCK-OUT SWITCH DECAL
5	1	35.00 lbmass	3300000006	EPB 24-675 - AUTOMOTIVE BATTERY
6	1	.00 lbmass	1920000110	34-48 HP KOHLER - MUFFLER KIT - LEFT HAND (NON-EFI)
7	1	73.62 lbmass	1890000001	HYDRAULIC RESERVOIR - 25 GALLON - STEEL
8	4	.00 lbmass	1624080007	SPRING LOCK WASHER - 3/8" - ZINC PLTD
9	17	.00 lbmass	1624070003	CONE LOCK NUT - 1/2"-13 UNC - ZINC PLTD
10	10	.00 lbmass	1624070001	CONE LOCK NUT - 1/4"-20 UNC - ZINC PLTD
11	10	.00 lbmass	1617070004	U.S.S. FLAT WASHER - 3/8" - ZINC PLTD
12	14	.00 lbmass	1617070002	U.S.S. FLAT WASHER - 1/4" - ZINC PLTD
13	4	.00 lbmass	1614000010	TRUSS HEAD SCREW - SQUARE - 1/4-20 UNC x 3/4 - ZINC PLTD
14	34	.00 lbmass	1613070006	S.A.E. FLAT WASHER - 1/2" - ZINC PLTD
15	11	.00 lbmass	1602070264	HEX BOLT - 1/2"-13 X 5 1/2" UNC - ZINC PLTD - GRADE 5
16	6	.00 lbmass	1602070246	HEX BOLT - 1/2"-13 X 1 1/4" UNC - ZINC PLTD - GRADE 5
17	4	.00 lbmass	1602070133	HEX BOLT - 3/8"-16 X 2 3/4" UNC - ZINC PLTD - GRADE 5
18	6	.00 lbmass	1602070006	HEX BOLT - 1/4"-20 X 1" UNC - ZINC PLTD - GRADE 5
19	3	.00 lbmass	1602070004	HEX BOLT - 1/4"-20 X 3/4" UNC - ZINC PLTD - GRADE 5
20	6	.00 lbmass	1518000004	CONE LOCK NUT - 3/8"-16 UNC - ZINC PLTD
21	1	.00 lbmass	650507917	CST39C HYD HOSE AND ADAPTER KIT
22	1	56.69 lbmass	650406390	VALVE MOUNT PLATFORM - RIGHT HAND
23	1	47.51 lbmass	503817	15 GALLON GAS TANK
24	4	.23 lbmass	405275	FUEL TANK TENSIONING BRACKET
25	1	4.60 lbmass	402352	HYDRAULIC FILTER MOUNT
26	1	56.67 lbmass	402234	HYDRAULIC OIL TANK MOUNT
27	1	106.00 lbmass	402175	WET KIT MOUNT
28	2	.36 lbmass	401494	BATTERY TENSIONING BRACKET
29	1	.87 lbmass	119645	KOHLER 38 HP MUFFLER PIPE
30	1	1.67 lbmass	116973	BATTERY CUT OFF SWITCH
31	2	.80 lbmass	116890	SIDE MARKER LIGHT MOUNT PLATE
32	1	.63 lbmass	104224	BATTERY HOLD DOWN PLATE
33	1	.06 lbmass	19-4000-0001	MUFFLER CLAMP 1 3/4"
34	1	132.00 lbmass	19-2000-0087	35 HP KOHLER GAS MOTOR
35	1	.00 lbmass	18-3000-0074	E700702A
36	1	4.78 lbmass	14-2100-0031	BATTERY CUT-OFF SWITCH C/W PADLOCK RECEPTOR COLE HERSEE
37	1	.09 lbmass	1830000116	SAFETY COVER-FOR PUMP ADAPTERS
38	1	2.88 lbmass	11-1200-0044	SHAFT COUPLER PUMP SIDE
39	1	3.07 lbmass	11-1200-0019	300 HUB COUPLER
40	1	.14 lbmass	11-1200-0036	SHAFT COUPLER INSERT
41	3	.00 lbmass	1613070002	S.A.E. FLAT WASHER - 1/4" - ZINC PLTD
42	1	.00 lbmass	18-3000-0073	CONCENTRIC PUMP
43	1	35.18 lbmass	1830000033	HYDRAULIC OIL FILTER
44	1	.00 lbmass	1830000032	SPIN ON FILTER HOUSING

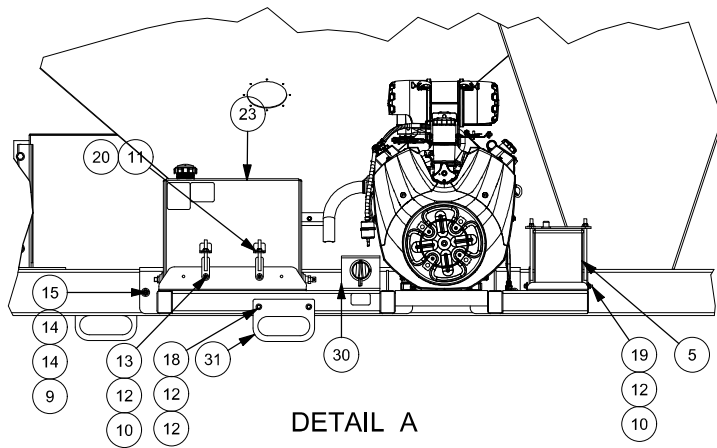
NOTE:
REPLACE 650507915 WITH 650508168
AND 400300 WITH 650406390 IN 650507914 (CST-39C)
WHEN USING THIS RIGHT HAND KIT FOR AUSTRALIA

B	Added Safety Cover, Pump, Oil Filter (ECO 3478)	2023-07-21	DB
REV	DESCRIPTION	DATE	DESIGNER
REVISION HISTORY			
 <small>WWW.MERIDIANMFG.COM</small>		PROJECT/CUSTOMER NAME:	
		CST39C - AU	
THIS DRAWING IS THE EXCLUSIVE PROPERTY OF MERIDIAN MFG INC. DUPLICATION BY ANY MEANS IS PROHIBITED WITHOUT PERMISSION FROM MERIDIAN MFG INC.		DESCRIPTION:	
		CST39C WET KIT - RIGHT HAND AU	
MATERIAL:		WEIGHT:	PROCESS:
		564.76 lbmass	
DRAWN BY:	DRAWN BY DATE:	CHECKED BY:	PART/DRAWING NUMBER:
AS	2021-08-06		650508168
REV:	SHEET No:		
B	1 OF 4		

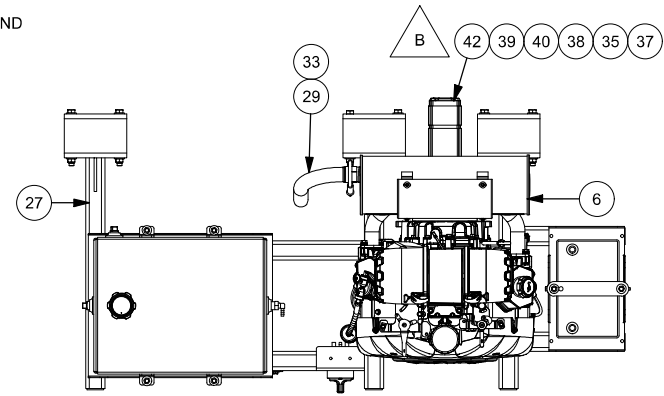




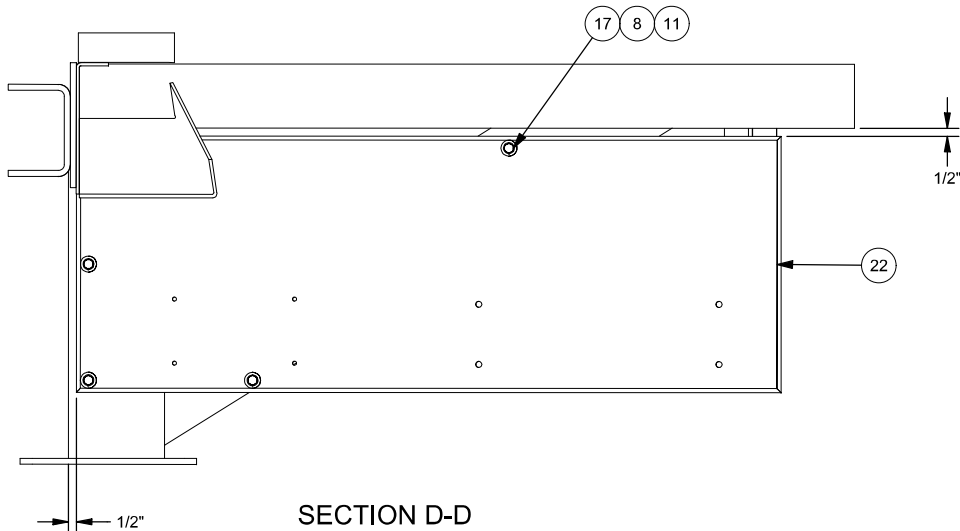
DRIVER SIDE - RIGHT HAND




DETAIL A

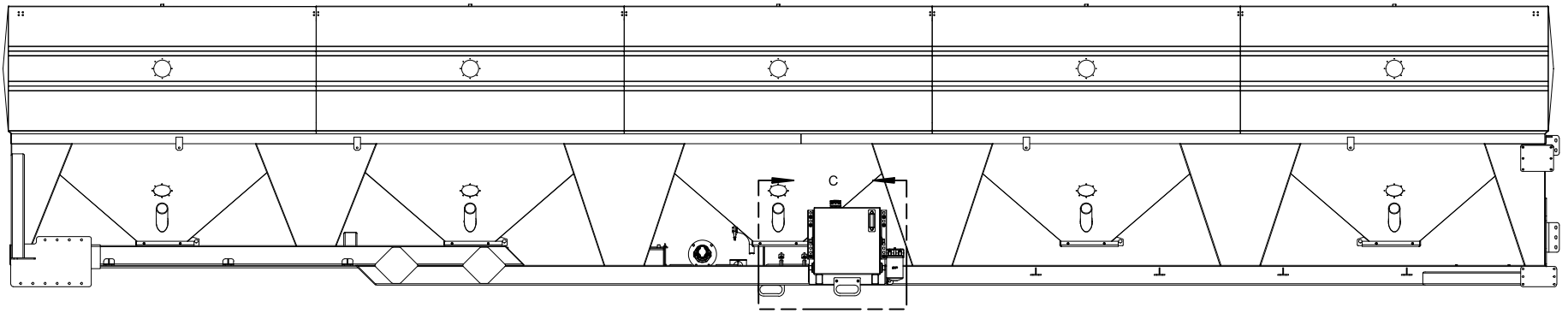


DETAIL B
TOP VIEW

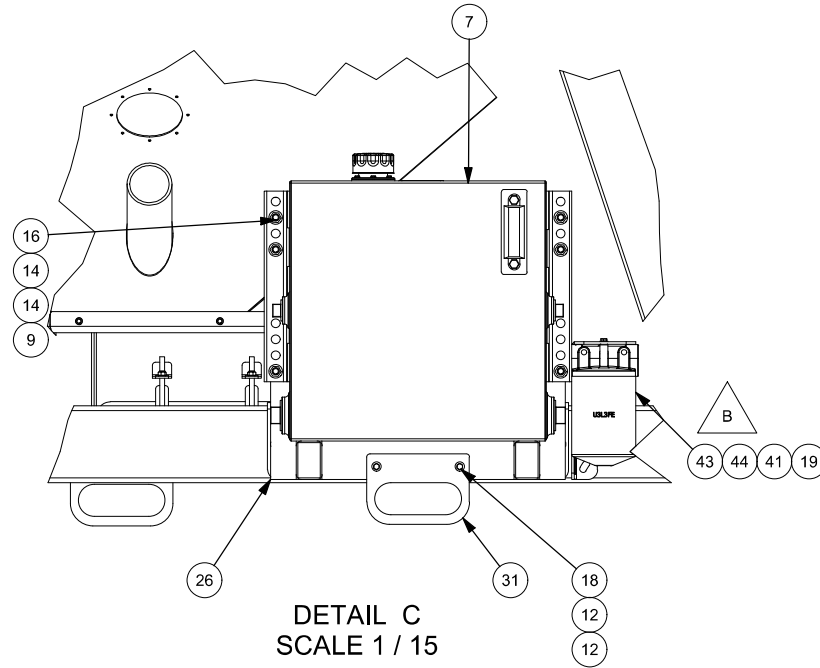


SECTION D-D
SCALE 1/12


		PROJECT/CUSTOMER NAME:			
		CST39C - AU			
<small>WWW.MERIDIANMFG.COM</small> THIS DRAWING IS THE EXCLUSIVE PROPERTY OF MERIDIAN MFG INC. DUPLICATION BY ANY MEANS IS PROHIBITED WITHOUT PERMISSION FROM MERIDIAN MFG INC.		DESCRIPTION:			
		CST39C WET KIT - RIGHT HAND AU			
MATERIAL:		WEIGHT:	PROCESS:		
		564.76 lbmass			
DRAWN BY:	DRAWN BY DATE:	CHECKED BY:	PART/DRAWING NUMBER:	REV:	SHEET No:
AS	2021-08-06		650508168	B	2 OF 4

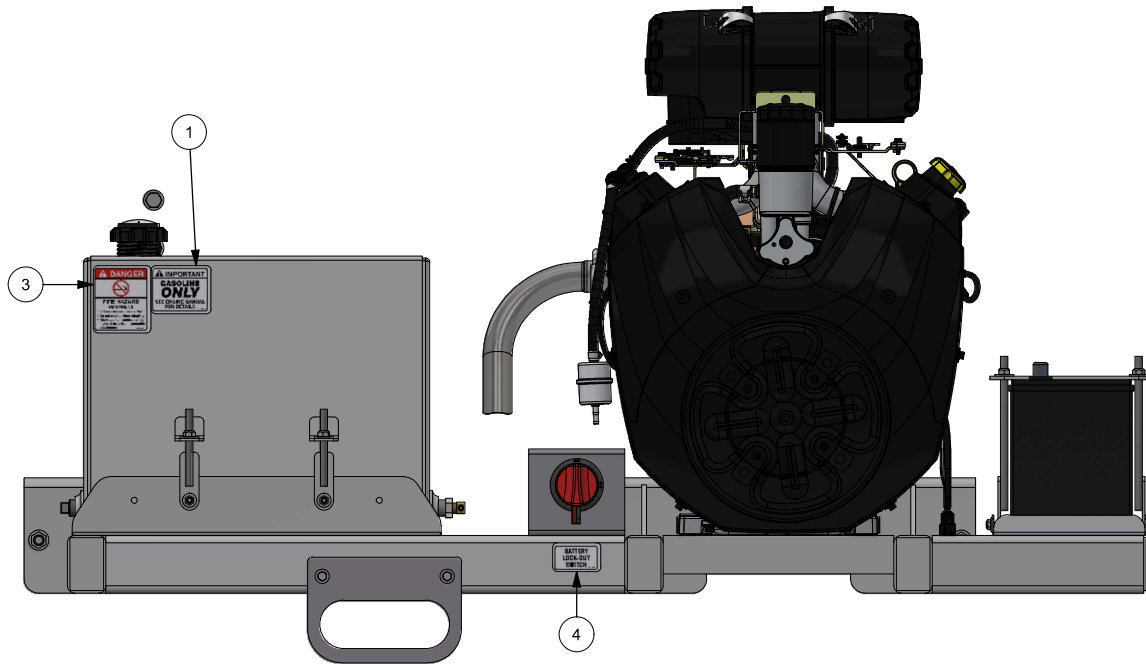


PASSENGER SIDE - LEFT SIDE

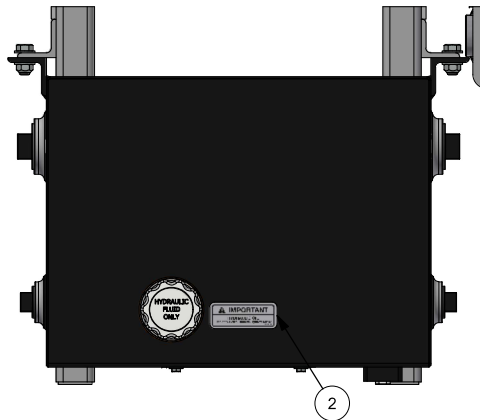


DETAIL C
SCALE 1 / 15


		PROJECT/CUSTOMER NAME:			
		CST39C - AU			
<small>WWW.MERIDIANMFG.COM</small> THIS DRAWING IS THE EXCLUSIVE PROPERTY OF MERIDIAN MFG INC. . DUPLICATION BY ANY MEANS IS PROHIBITED WITHOUT PERMISSION FROM MERIDIAN MFG INC.		DESCRIPTION:			
		CST39C WET KIT - RIGHT HAND AU			
MATERIAL:		WEIGHT:	PROCESS:		
		564.76 lbmass			
DRAWN BY:	DRAWN BY DATE:	CHECKED BY:	PART/DRAWING NUMBER:	REV:	SHEET No:
AS	2021-08-06		650508168	B	3 OF 4

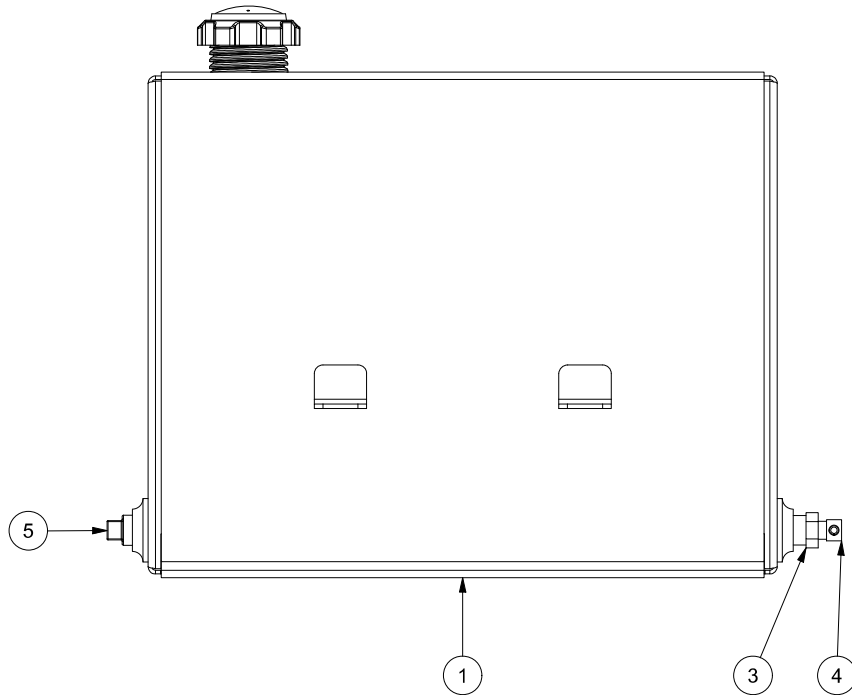
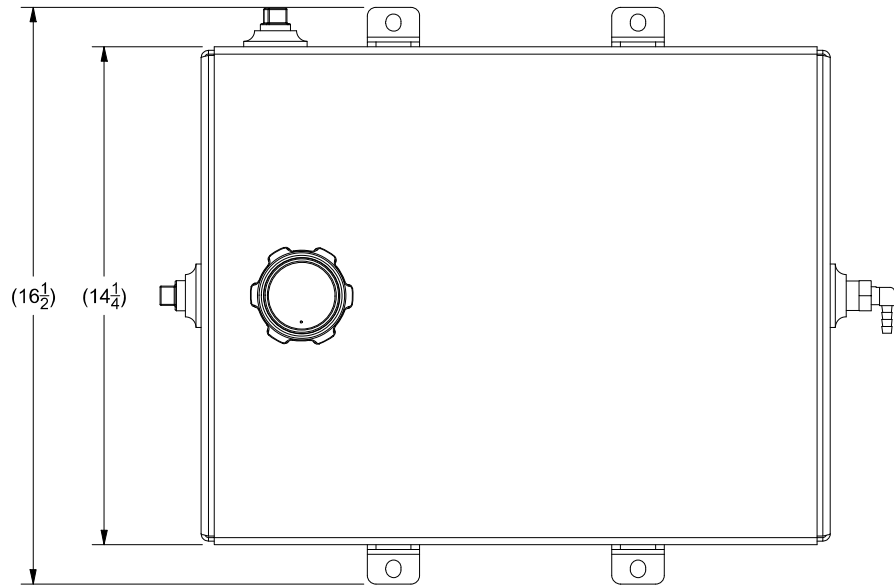


DRIVER SIDE

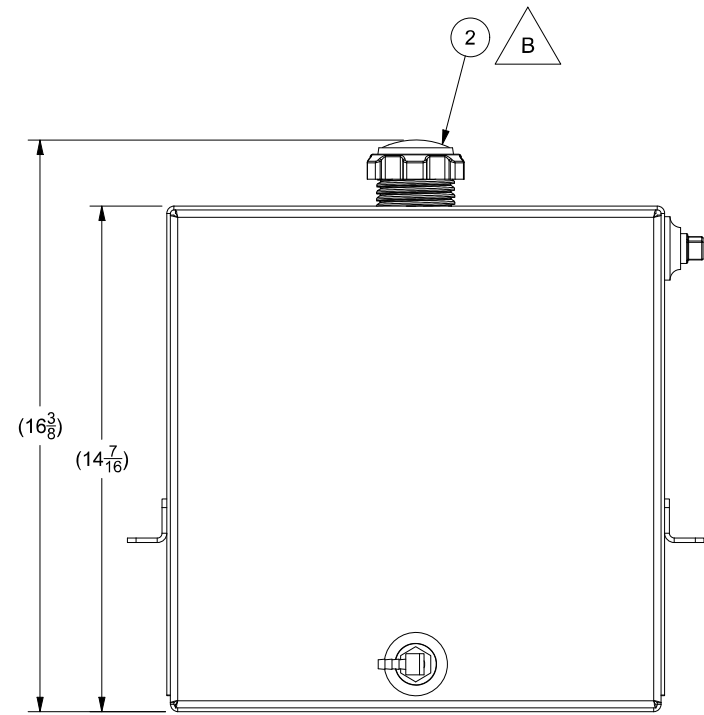


PASSENGER SIDE

		PROJECT/CUSTOMER NAME:			
		CST39C - AU			
<small>WWW.MERIDIANMFG.COM</small> THIS DRAWING IS THE EXCLUSIVE PROPERTY OF MERIDIAN MFG INC. DUPLICATION BY ANY MEANS IS PROHIBITED WITHOUT PERMISSION FROM MERIDIAN MFG INC.		DESCRIPTION:			
		CST39C WET KIT - RIGHT HAND AU			
MATERIAL:		WEIGHT:	PROCESS:		
		564.76 lbmass			
DRAWN BY:	DRAWN BY DATE:	CHECKED BY:	PART/DRAWING NUMBER:	REV:	SHEET No:
AS	2021-08-06		650508168	B	4 OF 4



ITEM	PART #	DESCRIPTION	QTY
1	405273	FUEL TANK WELD	1
2	650122150	FUEL CAP	1
3	18-3500-0025	8MP - 4FP	1
4	15-3000-0011	1/4" BARB 1/4" NPT	1
5	15-1600-0007	1/2" PLUG	2



TOLERANCES UNLESS OTHERWISE SPECIFIED: FRACTIONAL $\pm 1/16$, X.XXX ± 0.010 , ANGULAR $\pm 1^\circ$			
		PROJECT/CUSTOMER NAME:	
		COMMON	
<small>WWW.MERIDIANMFG.COM</small> THIS DRAWING IS THE EXCLUSIVE PROPERTY OF MERIDIAN MFG INC. DUPLICATION BY ANY MEANS IS PROHIBITED WITHOUT PERMISSION FROM MERIDIAN MFG INC.		PART DESCRIPTION:	
		15 GALLON GAS TANK	
WEIGHT:		PROCESS:	
47.52 lbmass			
MATERIAL:			
DRAWN BY:	DRAWN BY DATE:	CHECKED BY:	PART/DRAWING NUMBER:
ZP	2015-03-10	IP	503817
REV:	SHEET No:		
B	1 OF 1		

B	Replace Fuel Cap	2022-01-18	IP
REV	DESCRIPTION	DATE	DESIGNER
	REVISION HISTORY		

